



Western Cape
Government

FOR YOU

05SUB07/11/2023

Health & Wellness

Violence Prevention Unit

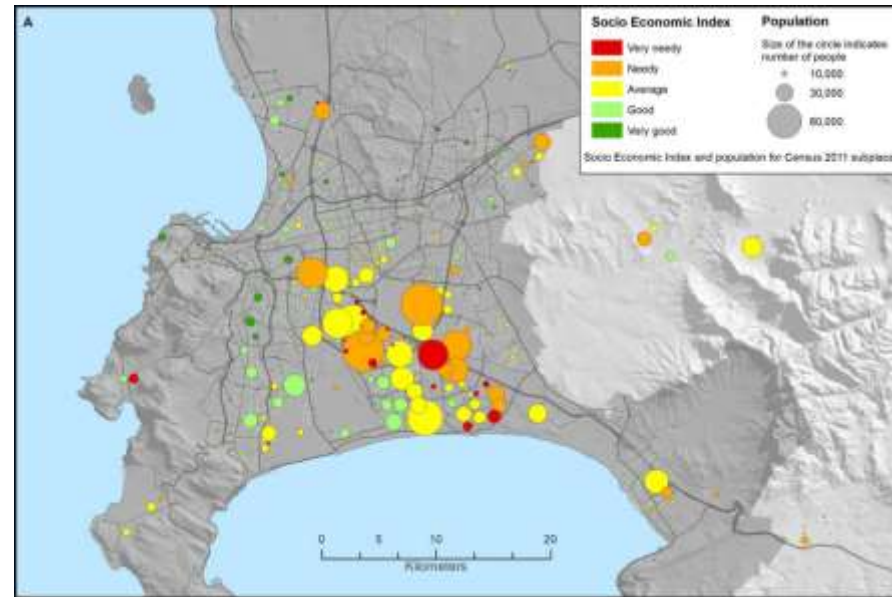
Overview
Sub-Council engagement
16 Nov 2023

Context

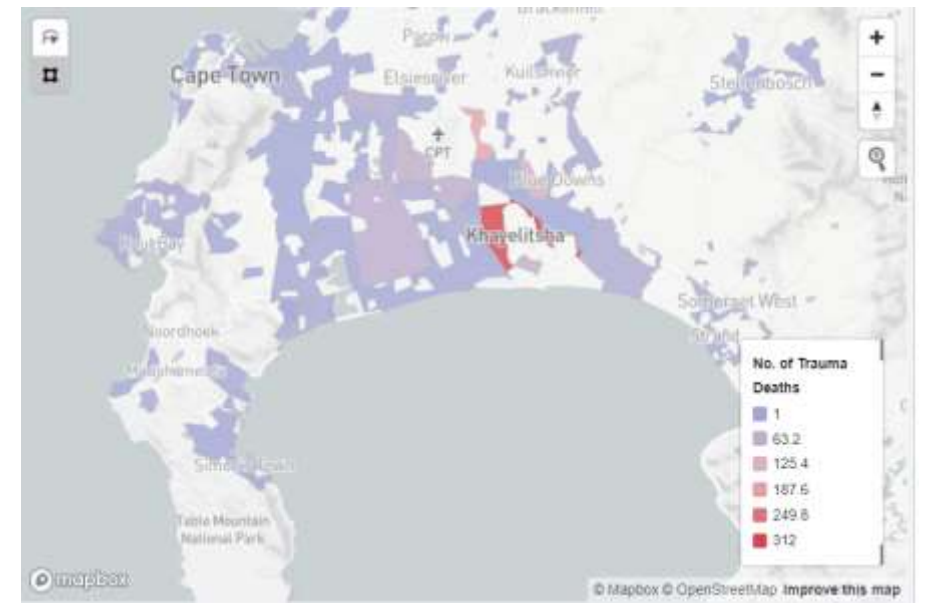
South Africa is perennially on the **top ten list of most violent countries in the world**. In 2020, data from the World Bank indicated that **South Africa** had a homicide rate of 33 per 100 000¹.

When applied to the **Western Cape**, the **homicide rate is 54.5 per 100 000 for 2021/22**².

Even then, we know that it is not 54.5 per 100 000 generally. In 2021/22, **ten police stations in the Western Cape** accounted for **46.65%** of all murders³. The reality is that violence is concentrated in certain areas, with most murders occurring in the poorest areas in the Western Cape.



Source: BURDEN OF DISEASE RAPID REVIEW UPDATE 2019



Top 10 Western Cape police stations with the highest counts of murder, 2018/19 - 2020/21

POLICE STATION	2018/19	% CONTRIBUTION	2019/20	% CONTRIBUTION	DIFF 2018/19-2019/20	% DIFF 2018/19-2019/20	2020/21	% CONTRIBUTION	DIFF 2019/20-2020/21	% DIFF 2019/20-2020/21
Khayelitsha	221	12.70%	251	14.80%	30	13.60%	265	14.76%	14	5.58%
Delft	247	14.10%	265	15.60%	18	7.30%	224	12.48%	-41	-15.47%
Nyanga	289	16.60%	185	10.90%	-104	-36.00%	203	11.31%	18	9.73%
Kraaifontein	151	8.60%	137	8.10%	-14	-9.30%	196	10.92%	59	43.07%
Harare	166	9.50%	162	9.50%	-4	-2.40%	189	10.53%	27	16.67%
Philippi East	185	10.60%	156	9.20%	-29	-15.70%	183	10.19%	27	17.31%
Mfuleni	154	8.80%	165	9.70%	11	7.10%	172	9.58%	7	4.24%
Gugulethu	155	8.90%	157	9.20%	2	1.30%	145	8.08%	-12	-7.64%
Samora Machel	30	1.70%	106	6.20%	76	253.30%	115	6.41%	9	8.49%
Mitchells Plain	148	8.50%	115	6.80%	-33	-22.30%	103	5.74%	-12	-10.43%
2020/21 Top 10 precincts total	1 746	43.94%	1,699	42.74%	-47	-2.70%	1,795	46.65%	96	5.65%
Provincial Murder Total	3,974		3,975		1	0.03%	3,848		-127	-3.19%
The top 10 police station murder proportion to the province	43.90%	In 2018/19, the top 10 precincts accounted for 43.9% murders.	42.70%	In 2019/20, the top 10 police precincts accounted for 42.7% of the total provincial murders			In 2020/21, the top 10 police precincts accounted for 46.6% of the provincial murders			

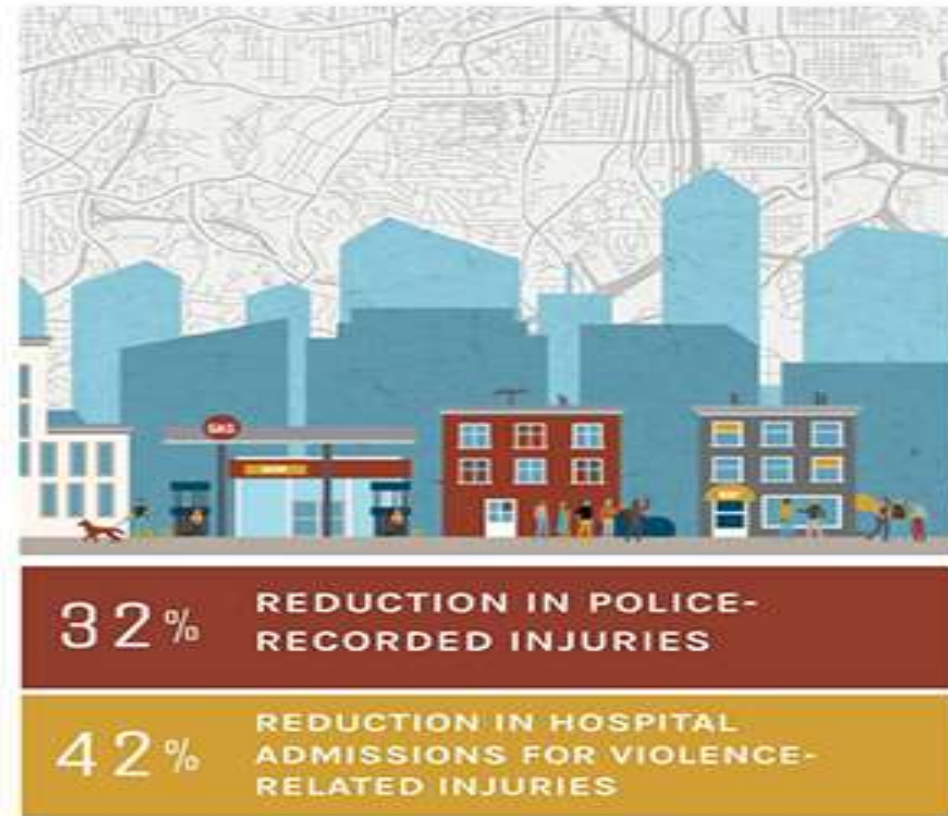
(Western Cape Crime Trends 2021/22)

Violence Prevention Unit

- "A first for SA: **VPU to be established in WC DHW.**
- The approach that we adopted to achieve this is a **public health approach** based on the **Cardiff Model of Violence Prevention.**
- Requires a data-led, evidence-based approach to crime and violence prevention.
- With data down to geographic level determining localized interventions required to reduce violence“.



The Cardiff Model



National Center for Injury Prevention and Control, Division of Violence Prevention, 2021

Most of violent crime is not reported to law enforcement.

Communities lack a complete understanding of where violence occurs, which limits the ability to develop successful solutions.

The Cardiff Model provides a way for communities to gain a clearer picture about where violence is occurring by combining and mapping both hospital and police data on violence.

Data anonymized, shared and combined with police data.

Identify previously undetected areas of violence.

Stakeholders used the data to develop tailored evidence-based community violence prevention intervention strategies.

Police were able to map when and where violence might happen, and concentrate resources on hotspot locations, & during particular times of the week, to help prevent incidents.



- 1
- 2
- 3
- 4
- 5

Increase **wellness, safety** and tackle **social ills**



- 1 **Safe & cohesive communities**
- 2 Growth & Jobs
- 3 Empowering People
- 4 Mobility & spatial transformation
- 5 Innovation & culture



Policing capacity and effectiveness

Support to youth and families at risk

Social cohesion and public spaces

Covid-19



COVID RECOVERY

JOB

SAFETY

WELLBEING

What?

Improved policing and law enforcement

Safety social cluster

Urban design



Data
Evidence

Area-based

How?

The Western Cape Safety Plan

ENHANCED ENFORCEMENT

Increased law enforcement capacity



Strong partnerships with the criminal justice system (SAPS, NPA)



Strengthened partnerships with community safety (NHWs, CPFs)



REDUCED VIOLENCE



Social sphere

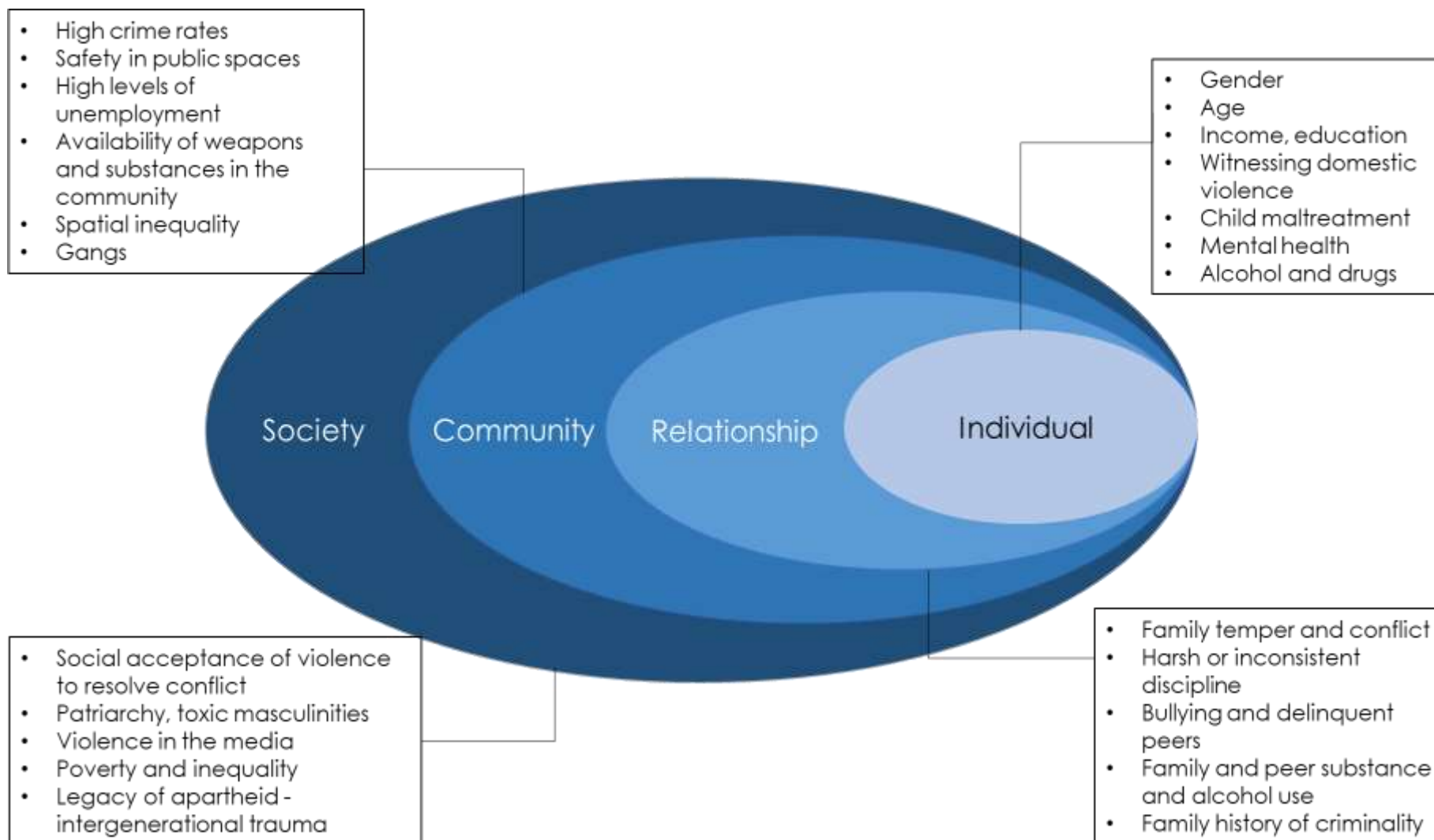


Spatial sphere



Economic sphere

Social ecological model



Prevention is better than cure (Erasmus, ca 1500) [but both are needed]

Image Credits: Google Images



Problem statement:

People keep falling off the cliff and hurting themselves



Solution 1: build a fence and warn people on the cliff.

Or, more usually, a combination of the 2...



Solution 2: build a hospital at the bottom of the cliff to care for the injured

The introduction of this unit provides a unique opportunity to apply a **public health approach to violence prevention in the Western Cape.**

Focuses on how underlying causes and risk factors - operating at the level of society, community, family, and the individual - interact to produce acts of violence.

Shift public view from seeing the primary responsibility for community safety as that of the police to recognizing that government, communities, and partnerships at all levels need to be actively engaged in achieving safety and reducing violence.

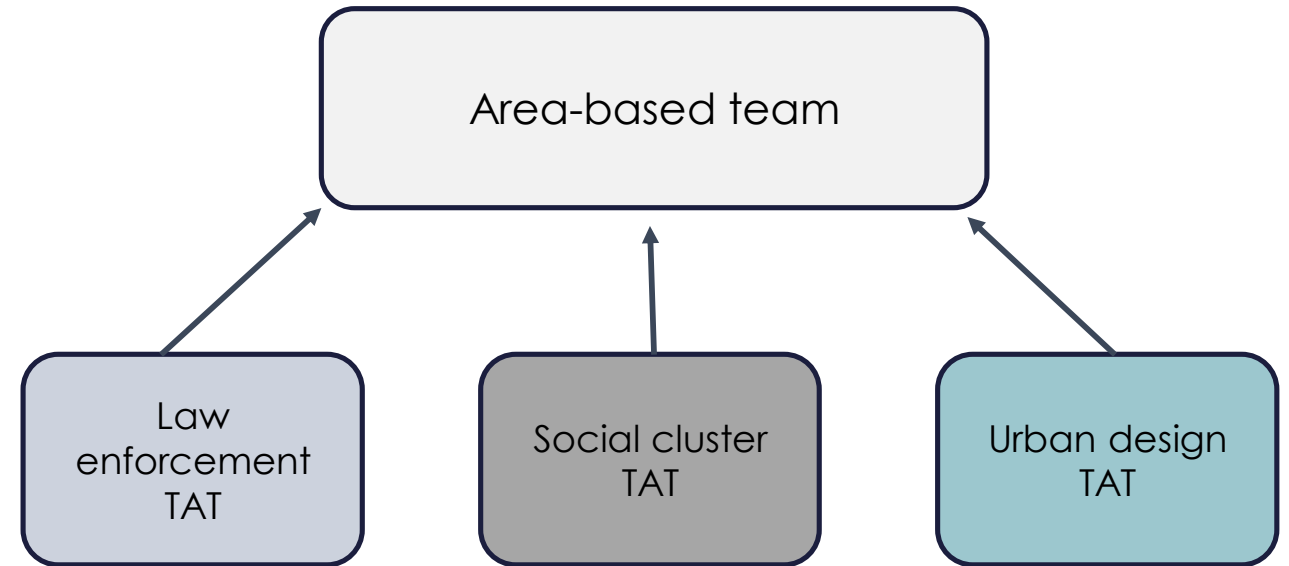


The Violence Prevention Unit:

Area-Based Teams for Safety Promotion

ABT establishment

Police Precinct where ABTs are to be established	DoHW District/Sub-Structure
1. Atlantis	SWSS
2. Gugulethu 3. Mitchell's Plain 4. Nyanga 5. <i>Phillipi (incl Hanover Park)</i> 6. Phillipi East 7. Samora Machel	KMPSS
8. Bishop Lavis 9. Delft 10. Kraaifontein	NTSS
11. Khayelitsha 12. Harare 13. Mfuleni	KESS
14. Beaufort West	Central Karoo
15. George	Garden Route
16. Witzenberg	Cape Winelands
17. <i>Swartland</i>	West Coast
18. Theewaterskloof	Overberg



- **PoCS**
- SAPS
- CoCT law enforcement / Metro
- Provincial Traffic
- NPA
- DCS
- CPF / NHW

- **DoHW**
- DSD
- WCED
- DCAS
- NGOs

- **Local municipality or Metro (MURP)**
- DLG
- DEA&DP

Why focus on these areas?



The image part with relationship ID r105 was not found in the file.

The image part with relationship ID r109 was not found in the file.

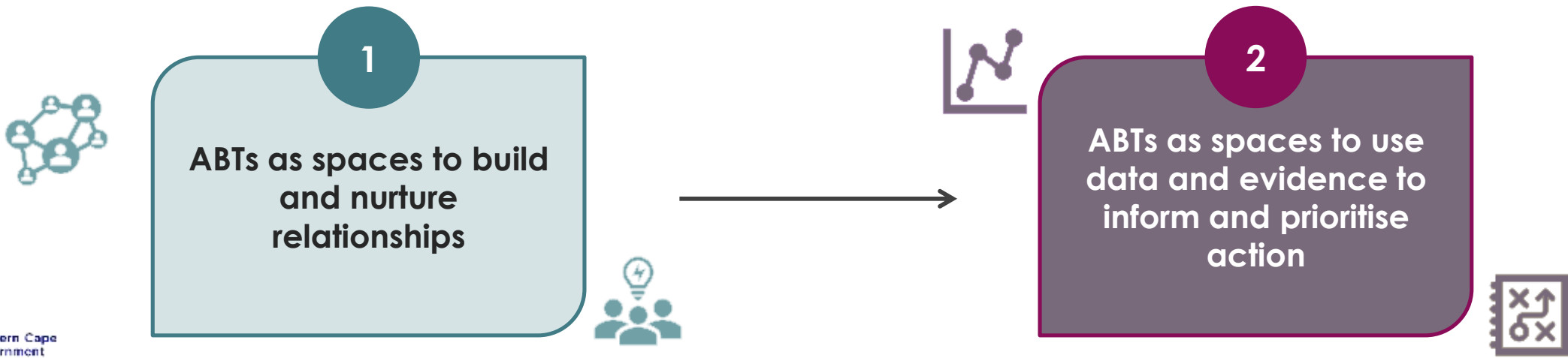
The image part with relationship ID r107 was not found in the file.

ABTs as spaces to identify prioritized action, supported by data

An area-based team (ABT) is a group of stakeholders in a **defined geographic area** that come together with the aim of improving the lives of the residents in that area, in partnership with the community and using a **whole of society approach**.

The initial goal of the ABTs linked to the VPU will be to reduce violence and improve safety in a geographic area, but **this goal can be expanded**.

There are clear synergies and alignment of principles between the ABT approach and the CoPC approach. In order to avoid duplication of efforts and to mitigate against potential for confusion at the implementation level, **the ABTs are embedded in the CoPC approach**.



The Strategic Approach

Domain of Law Enforcement Agencies

Reduce interpersonal violence and violent crime

Domain of Municipalities/Local Government

Law Enforcement Cluster

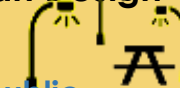
The effectiveness, professionalism and collaboration between law enforcement agencies in the WC is improved.



How will we get there?

Safe spaces/Urban Design

Safety and social connectedness in public spaces in priority areas is increased.



Improve the design of public spaces to increase safety

Improve roads & lighting to improve response time by police and emergency services

Social Cohesion

Social protective factors against violence are strengthened.



Data- and evidence-led operational approach

Improved law enforcement collaboration through ABTs and other platforms

Capacity to focus on drivers of crime (firearms, drugs, alcohol)

Family Strengthening

Youth at risk

Alcohol harms reduction

Addressing Gender-Based Violence

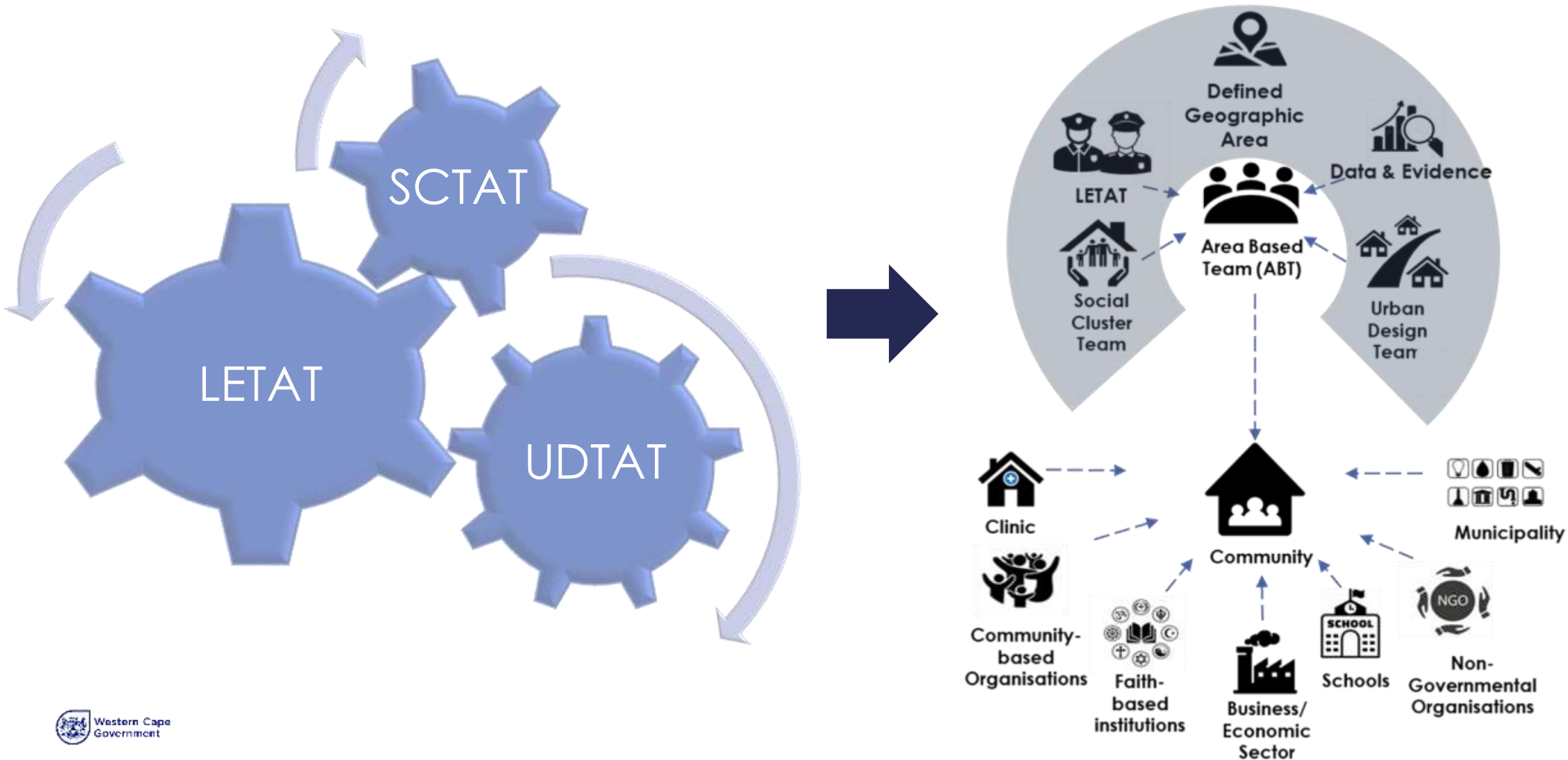
Relationships between children and their caregivers are strengthened.

Children, youth and adolescents' resilience and emotional intelligence is strengthened to better respond to threats of violence.

Harmful alcohol and drug consumption is decreased.

Harmful social norms on violence and gender are changed.

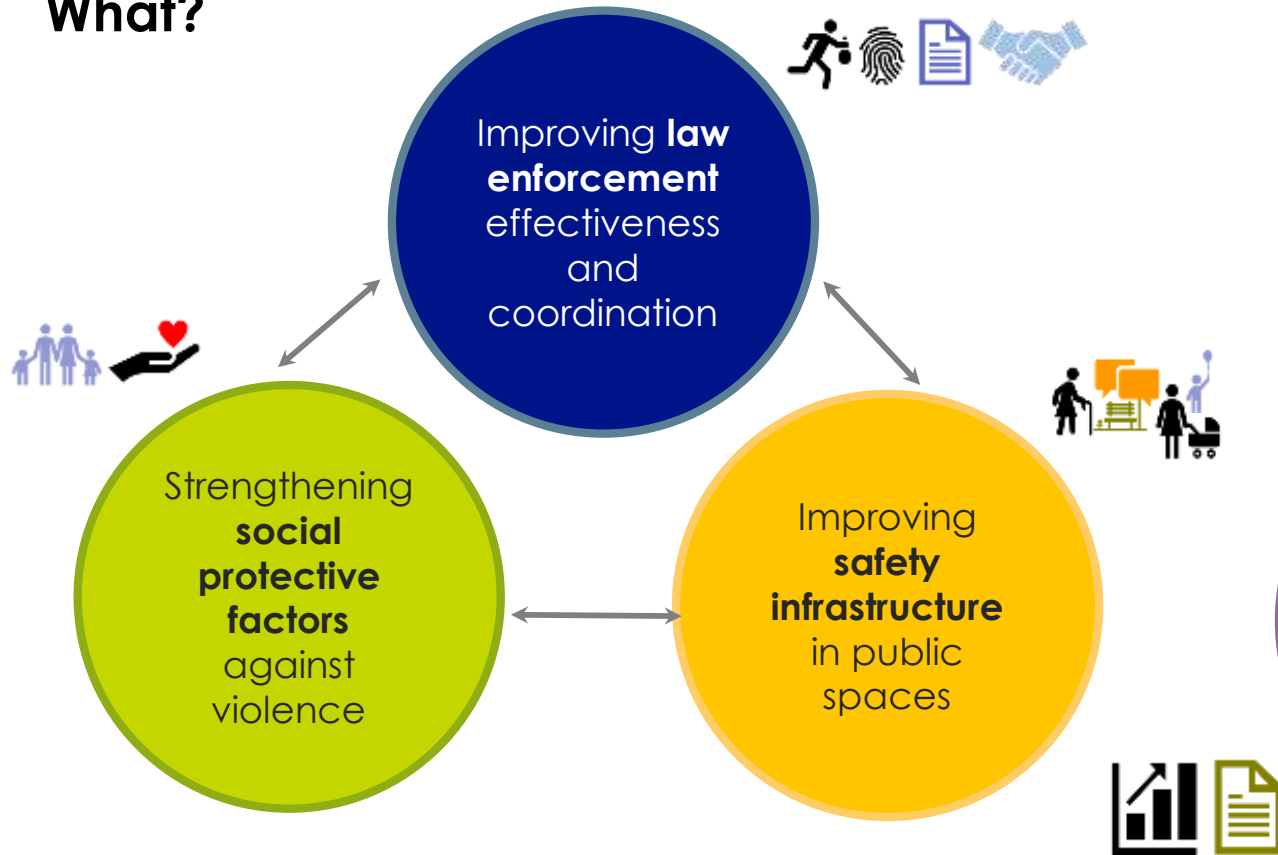
WCSP 2019 to 2024 : ABT APPROACH



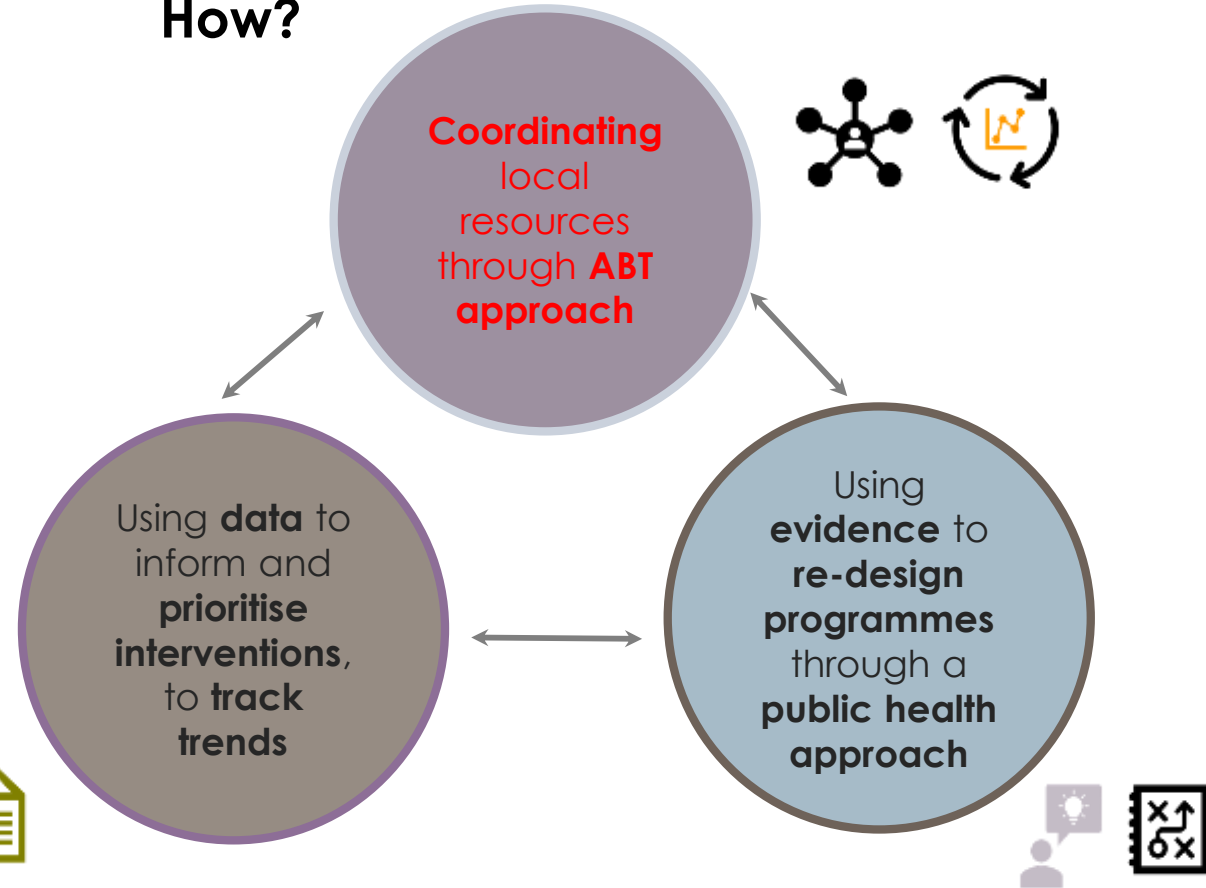
The Safety Theory of Change

Safety is everybody's business

What?



How?



Violence prevention (reduction) will ultimately lead to ...

1. Addressing **social determinants** of ill health & upstream factors that drive violence (e.g. social disintegration, harmful social norms, access to weapons, substance abuse, youth at risk, mental health issues, and so much more).
2. Reduction in the **admissions to Emergency Centres** – trauma; acute psychosis etc
3. **Reduction in the murder rate** in the province:
 - Safety plan goal is to reduce the murder rate by 50 % over the next 10 years (by 2029)
4. **Impact upon all sectors** e.g. school attendance, economic, social sector etc

Thank you