

# Load-shedding Area 11

City of Cape Town

## Legend

- Railways
- Major Roads
- Other Roads
- Standing Waterbodies
- Intermittent Waterbodies
- Biodiversity Networks
- Load-shedding Areas Feb 2021

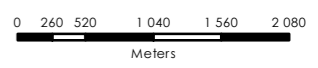
## CCT Load-shedding Areas Feb 2021

1	9
2	10
3	11
4	12
5	13
6	14
7	15
8	16

## Eskom Load-shedding Areas Feb 2021

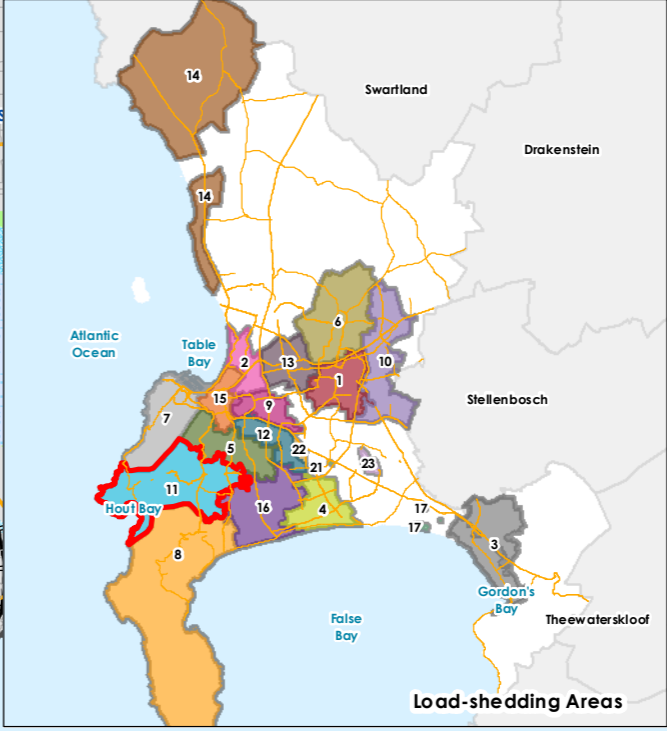
17	22
21	23
Eskom supplied	

**Please note:** The load-shedding areas, as indicated on the map, is an estimation of this customer areas. Affected areas may vary on occasion due to operational requirements.



1:58 000

**Please Note:**  
 - Every effort has been made to ensure the accuracy of information in this map at the time of publication.  
 - The spatial data portrayed in this map is as current, accurate and complete as provided by the various line departments responsible for the maintenance of these datasets.  
 - The City of Cape Town accepts no responsibility for, and will not be liable for, any errors or omissions contained herein.



**THIS MAP WAS COMPILED BY:**  
**CITY MAPS**  
 Information & Knowledge Management  
 Contact Information: Tel: +27 21 487 2711  
 Fax: 086 202 8439  
[city.maps@capetown.gov.za](mailto:city.maps@capetown.gov.za)  
 Date: February 2021  
 Job Number: 2021\_46



**CITY OF CAPE TOWN**  
**ISIXEKO SASEKAPA**  
**STAD KAAPSTAD**

Making progress possible. Together.