



**THE SPATIAL DISTRIBUTION OF SOCIO-ECONOMIC STATUS,
SERVICES LEVELS AND LEVELS OF LIVING IN THE CITY OF CAPE
TOWN 2001 – TO HIGHLIGHT SUBURBS IN NEED**

Author: Phillip Romanovsky and Janet Gie

Information & Knowledge Management Department

Strategic Information Branch

March 2006

TABLE OF CONTENTS

1.	Introduction	3
2.	Methodology	3
2.1	Limitations	3
3.	Application of the Indexes	4
4.	S.E.S. Index	4
4.1	Interpretation of S.E.S. Index	5
4.1.1	Spatial Distribution	6
4.1.2	Interpretation of Scores	6
5.	Service Level Index	6
5.1	Interpretation of Service Level Index	8
5.1.1	Interpretation of Scores	9
6.	Levels of Living Index	9
6.1	Interpretation of Levels of Living Index	10
6.1.1	Informal Settlement Areas	11
6.1.2	Public Housing and Low Income Private Residential Areas	11
6.1.3	Lower to Middle Income Private Residential Areas	11
6.1.4	Middle to high Income Private Residential Areas	12
7.	Conclusion	12
8.	More information	12
	Appendix 1: Table of S.E.S. Index (Worst 20% of Suburbs)	13
	Appendix 2: Map of S.E.S. Index	15
	Appendix 3: Table of Service Level Index (Worst 20% of Suburbs)	16
	Appendix 4: Map of Service Level Index	18
	Appendix 5: Table of Levels of Living Index (City of Cape Town)	19

Citation: City of Cape Town (2006), Information and Knowledge Management Department, The Spatial Distribution of Socio-Economic Status, Service Levels and Levels of Living in the City of Cape Town 2001, Janet Gie and Philip Romanovsky, 37 Pages.

1. INTRODUCTION

The main aim of this report is the development of a socio-economic hierarchy of suburbs as a guide to inform planning by identifying the geographical distribution of social deprivation and to highlight areas of greatest need.

There are three sections to the report which are based on the development of the following indexes and their constituent indicators:

1. **Socio-Economic Status (S.E.S.) Index**
2. **Service Level Index**
3. **Levels of Living Index**

These are derived from a number of key socio-economic indicators as recorded by Census 2001.

2. METHODOLOGY

The frequency of occurrence for each socio-economic and service level indicator was converted to a percentage. The percentage for each indicator that constituted the particular index was summed and the arithmetic average was then calculated for each suburb as defined by Census 2001.

Although relatively crude, these indexes provide a useful basis for comparison across the City of Cape Town. The indexes are of interest in their own right as summaries of areas' characteristics. The higher the score the worse off is the suburb.

The indexes were mapped to show the socio-economic and service level variations across the City.

2.1 Limitations

- The above methodology is fairly rudimentary as there was no weighting of the indicators that constitute the indexes. The indexes are purely descriptive in nature and merely describe the situation on the ground as recorded by Census 2001. These derived indexes are useful only as an inter suburb differential using the index to order suburbs.
- The indicators included in the analysis are limited to those for which data was collected by Census 2001. Ideally, an index of a socio-economic factor should include all measures of relevance to that factor. However, Census does not record information relating to many significant factors such as wealth and access to infrastructure such as schools, community services, transport and shops.
- The broader characteristics of the area need to be noted when interpreting the scores. For example, an area such as Camps Bay would be expected to score very low in relation to socio-economic deprivation. However, there are a significant number of live-in domestic workers, recorded in the census as separate households, which would raise the measure of deprivation for this suburb. Similarly, high student populations with low incomes, in areas such as Rosebank and Mowbray, result in higher measures of deprivation for these areas than one might expect.

3. APPLICATION OF THE INDEXES

There are a number of ways the indexes can be used, such as targeting areas for business or service development, demographic profiling, strategic planning, allocation of funds, design of sample surveys, and social or economic research

4. S.E.S. INDEX

In general it can be assumed that a person gains entry to an occupation by obtaining a relevant education. The nature and level of the occupation is determined by the level of educational attainment. As a consequence of pursuing an occupation the person receives an income. Occupation, education, and income are all related to S.E.S. Thus S.E.S. is an important concept in measuring social and economic well-being.

The index of S.E.S. is derived from attributes such as low income, low educational attainment, high unemployment levels and jobs in relatively unskilled occupations.

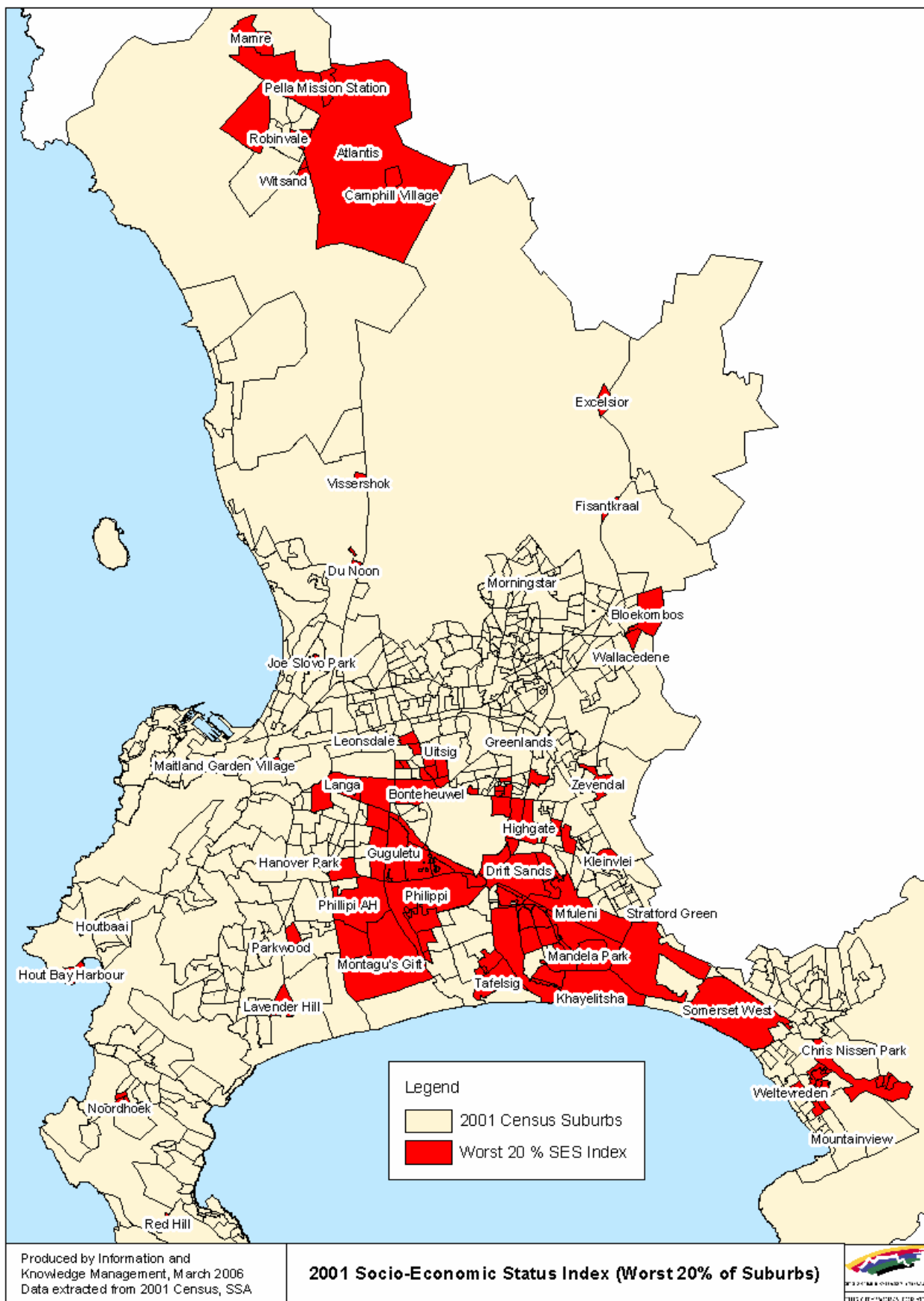
In general it can be concluded that a person qualifies for occupational life by obtaining an education and as a consequence of pursuing an occupation the person receives an income. Thus S.E.S. is an important concept in measuring social and economic well-being.

To measure S.E.S. in the City of Cape Town the following indicators were used:

- *% of households earning less than R19 200 per annum.*
The figure of R19 200 per annum approximates the household subsistence level for Cape Town for 2001 as calculated by the institute for Planning Research, University of Port Elizabeth. Accordingly this indicator represents the proportion of households earning below the minimum level for household subsistence.
- *% of adults (20+) with highest educational level less than matric.*
This indicator represents the number of adults (aged 20+) with less than a matric education, as a percentage of all adults. A matric level of education is increasingly regarded as the minimum level required for post-school training.
- *% of the economically active population that was unemployed*
This indicator represents the number of adults who are unemployed and actively seeking work as a percentage of all adults available for work. This excludes those not seeking work, such as homemakers, students and retired people.
- *% of the labour force employed in elementary/unskilled occupations*
The indicator of occupational status used was the number of people employed in elementary and unskilled occupations as a percentage of all employed.

Each of these indicators represents a single dimension of S.E.S., such as household income or education. These indicators are combined to form an index, which represent a wider understanding of socio-economic status. In each case, the higher the score on the indicator or index, the worse off is the suburb concerned.

4.1 Interpretation of S.E.S. Index



The map shows the spatial distribution of those suburbs which has S.E.S. index scores that fell within the bottom quintile (20%). Appendix 1 lists these by suburbs in descending order. A high score on this index indicates that a relatively large proportion of households are experiencing absolute poverty, have a large number of unemployed workers and employees with low educational qualifications earning low salaries in unskilled occupations.

Using the S.E.S. index, each suburb was ranked in comparison to all suburbs in the City of Cape Town. The S.E.S. index scores for the suburbs were then grouped into 5 categories by the natural break method and mapped (See Appendix 2). The categories are colour-coded and suburbs are shown on the map according to the category in which its score falls.

4.1.1 Spatial Distribution

There are three distinct groupings of suburbs whose residents/households recorded high scores on the S.E.S. index. The first cluster of suburbs with high S.E.S. index scores consists mainly of informal and formal low cost housing in an almost continuous axis from Blue Downs to Khayelitsha in the south-east section of the City. This concentration includes sections of Blue Downs, Delft, Khayelitsha and sections of Mitchell's Plain. The second concentration of suburbs is to the west and flanks the Blue Downs and Khayelitsha grouping. This area includes suburbs in Elsie's River, Langa and Gugulethu, parts of the Cape Flats (Bishop Lavis, Manenberg and Hanover Park), the Phillippi area and the Weltevreden Valley region. The third grouping of areas includes the suburbs of Atlantis in the north. The concentration of these suburbs is characterized by planned and unplanned informal settlements and low cost public and private housing. There are a number of small pockets of relatively deprived suburbs spread across the City in the South Peninsula area, on the northern corridor towards Atlantis and in the Oostenberg and Helderberg regions.

4.1.2 Interpretation of Scores

Those suburbs that registered high scores, above 60, on the S.E.S index were predominantly characterized by informal housing developments whereas individual and households in the low income public and private housing suburbs registered scores between 40 and 60.

Between 60% and 80% of households in informal settlements earned below R1 900pm. This figure is slightly above the household subsistence level as calculated by the University of Port Elizabeth for 2001. The occurrence of poverty in the low income public and private housing was lower with 25% to 50% of households living below the household subsistence level. This percentage includes households who are earning below and just above the poverty level. These households, given their low income, have difficulty in purchasing basic essentials such as shelter, food, clothing, energy and transport which is essential for a healthy and productive standard of living. These households are excluded from benefiting from the economic and social opportunities offered by the City.

The economic development of many of the residents of informal settlements is severely limited by their low educational status. Between 70% and 85% of adults over the age of 20 years have an educational level less than matric. This limits their entry into the formal sector where higher educational standards and professional skills are required. In the public/private low income housing areas between 20% and 30% of adults have an education qualification less than matric. Their options are limited to menial jobs with low wages and no job security. The unemployment rate in informal settlements is exceptionally high and ranges between 50% and 60% of the economically active compared to between 20% and 30% unemployment rate in the low income public/private housing developments.

5. SERVICE LEVEL INDEX

The S.E.S. index reflects a partial understanding of deprivation and needs to be complemented by indicators showing access to services and amenities. Where accessibility to services and amenities is

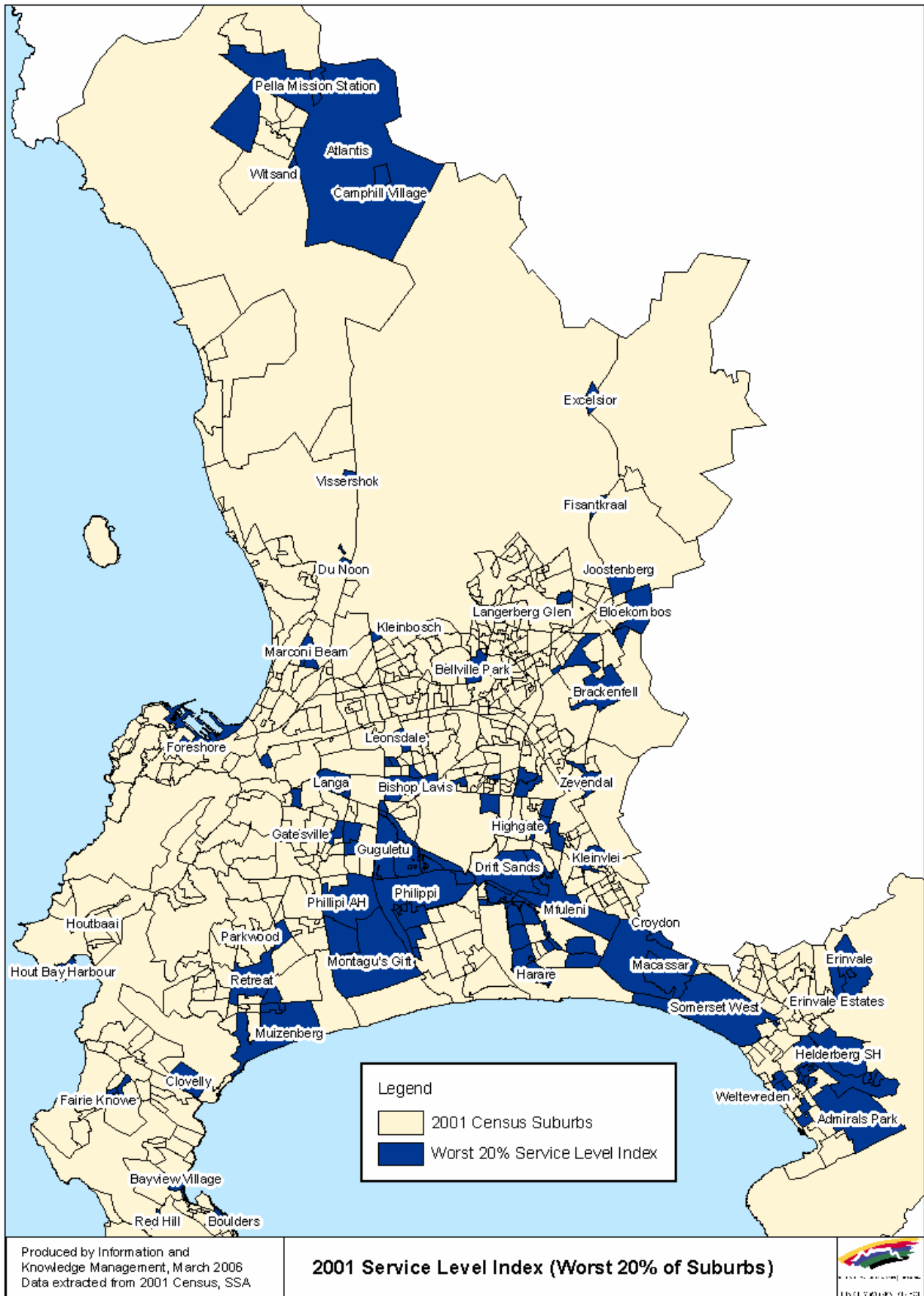
improved, the well-being of households/individuals is enhanced and economic and social development is increased, environmental pollution is decreased, and health status is improved

The majority of households in the City of Cape Town area have access to basic services. In order to highlight those households that lacked access to basic services, 2001 Census indicators (which are summarized by the service level index) were used to determine the percentage of households with no access to certain levels of services.

The following indicators, to measure the level of access to basic services, were derived from the 2001 Census data:

- *% Household living in informal dwellings.*
- *% Households with no access to electricity for lighting.*
- *% Households with no flush or chemical toilets*
- *% Households with no potable water on the site or in the dwelling*
- *% Households with no refuse removal by local authorities weekly or less.*

5.1 Interpretation of Service Level Index



The map shows the spatial distribution of those suburbs that fell within the bottom quintile (20%) of the service level index scores. Appendix 3 lists the suburbs that fell in this quintile in descending order. The spatial patterns although not identical, are similar to the spatial distribution as developed for the S.E.S. index. There is a significant difference between the scores for the informal settlements and low income public/private housing. The low income public/private housing suburbs recorded scores that indicated that these areas were well serviced with a wide range of services. There were also different levels of access to services between the various informal settlements and variations in the delivery of services to low income public/private housing suburbs.

The service level indexes scores were ranked in comparison to all suburbs in the City. The service level index scores for the suburbs were then grouped into 5 categories by the natural break method and mapped (See Appendix 4). The categories are colour-coded and suburbs are shown on the map according to the category in which its scores falls. It needs to be noted that some of the suburbs that are large in area are more rural in character with few residents. Although these suburbs show poorly with respect to access to basic services, the number of people affected is relatively low.

5.1.1 Interpretation of Scores

Service level scores above 60 were registered by a number of informal settlements whereas the more formal low income suburbs recorded scores below 60. Appendix 3 shows that for a number of informal settlements, such as Airport Informal, Du Noon, Modderdam and Wallacedene, 90% of households did not have access to electricity for lighting, have no flush or chemical toilets, no potable water on the site or in the dwelling and between 30% and 80% of households had no refuse removals weekly or less. There were certain informal settlements, such as Khayelitsha Site C, Masiphumelele and Khayelitsha T3–V5 which, although characterized by low socio-economic status, registered scores which indicated a high level of service.

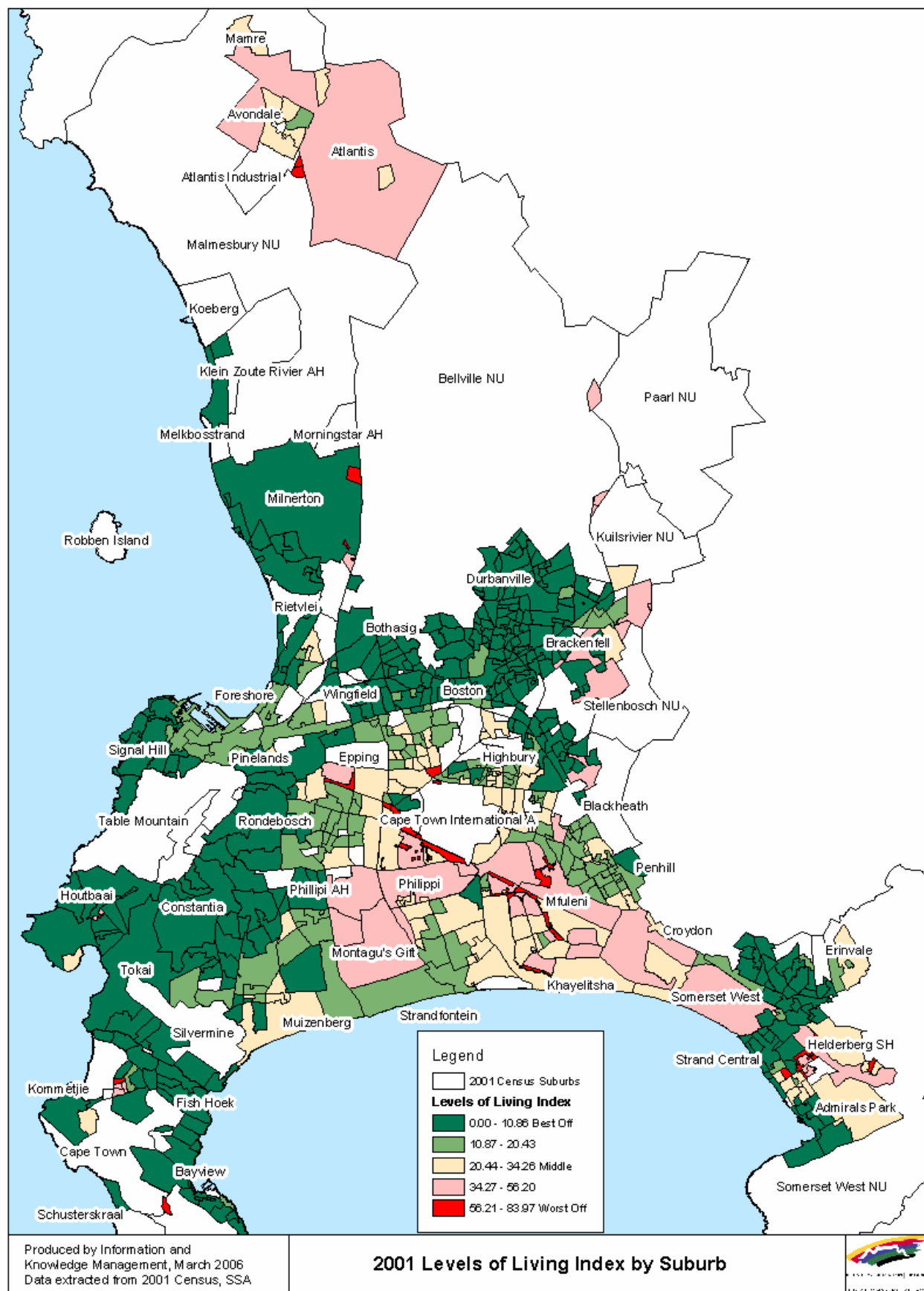
6. LEVELS OF LIVING INDEX

The combination of the S.E.S index and the service level index into a level of livings index incorporates a number of socio-economic and service level indicators that relate to specific aspects of income and housing. These indicators are closely related to the components that make up levels of living such as education, employment and services. This composite index focuses on circumstances of well-being and does not address the subjective experience of poverty and deprivation of households and individuals generally. The weighting of these indicators occurred implicitly as the weighting was related to specific standards (household subsistence level, unemployment, unskilled labour and education level), with the particular aim of highlighting those suburbs which are relatively disadvantaged.

The level of living Index scores were grouped into 5 categories by the natural break method. This method bases the upper and lower limits of each category on the concentration of scores within the overall distribution of scores. Forcing the distribution into 5 categories means that five groups of similar scores are created. As a result, the number of suburbs in each category is not constant. Instead, suburbs are groups according to sharing similar scores. This method assumes that suburbs having similar scores share similar characteristics.

These 5 categories conform to the 5 suburban types developed for the IDP as a framework for analyzing needs of suburbs throughout the City of Cape Town. In the study the residential areas within the City were segmented into the 5 types, using the criteria of housing type, tenure and income. The five residential area types are informal settlements, public housing, low income private, lower to middle income private and middle to high income private.

6.1 Interpretation of Levels of Living Index



The levels of living index scores of all the suburbs are listed, in descending order, in Appendix 5.

6.1.1 Informal Settlement Areas

Scores between 56.21 and 83.97 (colour code red) were registered by informal settlements residents. Given the depressed physical environments of the informal settlements there is a pressing need to provide access to a range of services such as sewage provision, cleansing and access to water in order to improve the healthy status of residents. The provision of land and security of tenure is a necessary pre-requisite to effect physical development, facilitate economic activity and increased worker productivity. There is a need to reduce the level of poverty and increase productive employment by addressing the mismatch between the educational level of residents and the skills needed for locally available jobs. Skills training and educational programmes are needed to enable people to utilize opportunities created by economic development and upgrading initiatives within the settlements. For many of these households informal activity is providing the sole source of income to purchase those basic essentials needed to maintain a fairly satisfaction level of living.

Employment strategies must assist informal and local enterprises to become more productive and ensure the integration of this sector into the informal economy through access to affordable credit appropriate technology, management skills, improving physical infrastructure and the establishment of markets in appropriately located areas.

The rising rate of crime in these informal settlements not only generates high levels of fear and insecurity among the residents but is also a major deterrent to local investments. Crime prevention initiatives, various social programmes and a wide range of facilities are needed to accommodate the recreational and employment needs of the youth.

Physical provision and service delivery programmes should be complemented with social support initiatives that focus on local initiatives and the felt needs of the residents of informal settlements.

It is clear that any significant improvement of living conditions, especially the social problems associated with poverty (alcoholism, literacy, low health status, etc.), can be brought about only by combining the schemes of physical improvement, on the one hand, and by the maximum voluntary effort on the part of the residents/government (national/provincial), welfare organizations and the private sector.

6.1.2 Public Housing and Low Income Private Residential Areas

Scores between 34.27 and 56.20 (colour code pink) were registered by residents in both low income (rented) public housing and low income private housing residential areas. Although these areas have access to a high level of services, they are characterized by poor social and physical environments that have manifested in high levels of violent crime, gangsterism as well as drug and alcohol abuse. Within these areas there is a major need for multi-electoral renewal programmes that address the depressed physical, economic and social environments. More housing options are necessary due to the large incidence of backyard and free standing shacks and the development and management of communal spaces. There is a social need for crime prevention strategies that includes programmes that aim to alleviate poverty, increase productive employment opportunities and provide recreational facilities.

The low income private (subsidized) suburb social needs are similar to those of the public housing areas, however the environmental quality of these areas are relatively poor. There is a major need to physically improve the housing units by providing technical and material support systems and the provisions of public facilities to improve the liveability of the areas.

6.1.3 Lower to Middle Income Private Residential Areas

Scores between 20.44 and 34.26 (colour coded yellow) were registered by residents in lower to middle income suburbs. These suburbs are well serviced and the needs of these suburbs are related to maintaining the existing level of services and specifically the maintenance of public space, the control of traffic and the better policing of these areas.

6.1.4 Middle to High Income Private Residential Areas

Scores between 0.00 and 20.43 (colour-coded green) were registered by residents of middle to high income suburbs.

These suburbs are characterized by households that are experiencing a fairly high level of living, relatively low unemployment with employees and employers earning high salaries in mainly skilled, professional and managerial occupations. These areas are well serviced and the focus of service strategies should be in the maintenance of existing service levels and targeting available resources where necessary to address issues such as cleaning of public places, controlling illegal dumping, better traffic control and crime prevention strategies that focus on increased policing.

7. CONCLUSION

This study has demonstrated spatially the large “gaps” that exist in levels of living in the City of Cape Town. Undoubtedly there are large areas, some of which are contiguous while others are almost islands that are suffering conditions of extreme deprivation. From a developmental point of view these structural obstacles need to be addressed if there is to be stability and growth in the region.

8. MORE INFORMATION

Should you require further information please contact one of the following:

Janet Gie
Information and Knowledge Management Department
Tel: 021 400-2515
Fax: 021 418-5238
Email: Janet.Gie@capetown.gov.za

Phillip Romanovsky
Information and Knowledge Management Department
Tel: 021 400-2526
Fax: 021 418-5238
Email: Phillip.Romanovsky@capetown.gov.za

Website: www.capetown.gov.za

APPENDIX 1: TABLE OF S.E.S. INDEXES FOR THE CITY OF CAPE TOWN (WORST 20 % OF SUBURBS)

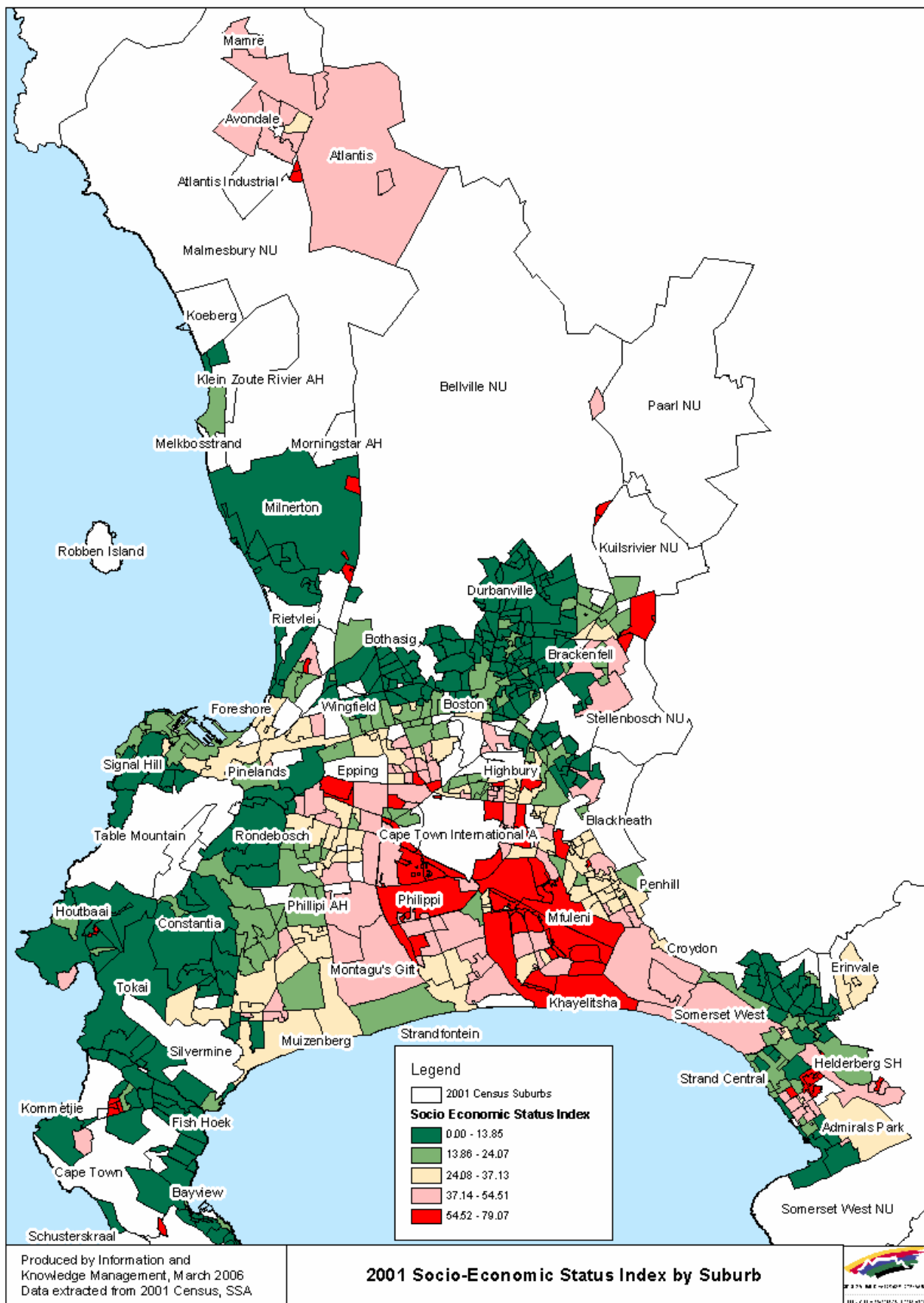
SUBURB	% ADULTS (20+) WITH HIGHEST QUALIFICATION < MATRIC	% OF ECONOMICALLY ACTIVE UNEMPLOYED	% HOUSEHOLDS EARNING < R19200 PA	% OF LABOUR FORCE IN UNSKILLED OCCUPATIONS	S.E.S. INDEX
Vissershok	100.00	75.03	93.86	47.37	79.07
Chris Nissen Park	100.00	58.33	68.77	80.00	76.78
Lwandle (Informal)	89.74	61.96	92.41	52.82	74.23
Du Noon (Informal)	92.15	69.77	89.31	45.28	74.13
Mfuleni (Informal)	88.27	64.89	88.87	53.24	73.82
Bridgewater Ext 1 (Lwandle)	80.22	62.11	93.22	58.58	73.53
Lekkerwater	91.21	55.63	84.27	62.74	73.46
Bloekombos	88.90	68.60	90.77	44.63	73.23
Sunnyacres	82.37	59.78	82.38	65.57	72.53
Wallacedene (Part 2)	93.06	58.12	85.80	49.23	71.55
Kraaifontein East	93.94	48.32	81.04	62.66	71.49
Nomzano (Informal)	82.95	54.23	86.12	60.49	70.95
Welgelegen	89.44	56.70	82.87	52.54	70.39
Masiphumelele	78.86	60.55	83.68	55.67	69.69
Nyanga (Informal)	84.09	58.80	84.31	48.81	69.00
Crossroads (Informal)	84.84	55.89	85.43	46.51	68.17
Wallacedene (Part 1)	85.59	51.72	79.54	54.97	67.96
Guguletu (Informal)	81.84	55.20	84.19	50.24	67.87
Imajamojea	90.87	47.97	77.85	51.66	67.09
Langa (Informal)	80.81	56.05	85.15	46.10	67.03
Philippi	79.59	59.00	82.95	46.29	66.96
Khayelitsha Site C (Part 1)	83.79	57.20	80.94	45.79	66.93
Khayelitsha T2-V2b	79.68	57.24	87.22	41.14	66.32
Crossroads (Guguletu)	81.25	57.34	80.69	45.89	66.29
Khayelitsha (Informal)	80.36	54.12	83.34	47.34	66.29
Wimbleton	89.91	53.79	75.89	45.02	66.15
Nomzano (Formal)	84.80	44.58	78.24	55.81	65.86
Khayelitsha T1-V3	77.47	53.93	78.08	52.34	65.46
Fisantkraal (Part 1)	92.01	38.71	72.75	56.28	64.94
Khayelitsha Site C (Part 2)	81.25	56.11	71.18	51.02	64.89
Khayelitsha T1-V4	79.07	52.86	78.81	48.51	64.81
Airport Informal	91.35	33.77	77.69	56.36	64.79
Drift Sands	77.91	63.42	81.15	34.35	64.21
Ezimbacwini	78.70	48.06	75.71	54.34	64.20
Du Noon (Formal)	80.57	51.35	78.23	46.02	64.04
Imizamo Yetho	80.19	45.99	70.26	57.68	63.53
Witsand (Part 1)	81.40	46.11	83.86	39.70	62.77
Crossroads (Formal)	77.53	52.45	72.75	47.70	62.61
Fisantkraal (Part 2)	91.10	44.29	64.51	48.86	62.19
Modderdam	75.14	64.06	80.72	28.62	62.14
Khayelitsha T3-V3	80.32	51.31	72.34	44.55	62.13
Nyanga (Formal)	76.75	55.17	67.35	47.24	61.63
Khayelitsha T3-V5	79.50	51.56	71.89	43.55	61.63
Mfuleni (Formal)	78.52	51.26	70.75	45.82	61.59
Noordhoek	77.81	49.27	68.06	50.27	61.35
Harare	76.66	50.55	73.49	42.87	60.89
Delft South	81.48	56.57	70.88	34.31	60.81
Westbank	84.98	49.15	71.34	37.38	60.71
Strand (Informal)	86.88	34.23	78.10	41.67	60.22
Griffiths Mthenge	76.81	48.19	68.08	47.41	60.12
Sir Lowry's Pass (Informal)	89.76	25.25	69.17	54.50	59.67
Vogelvllei	84.86	47.97	65.86	39.83	59.63
Khayelitsha (Formal)	74.80	49.44	78.83	35.40	59.62
Joe Slovo Park	80.74	42.61	68.19	43.68	58.81
Red Hill	95.30	24.61	67.47	45.86	58.31
Witsand (Part 2)	84.86	43.18	89.27	14.63	57.99
Kalkfontein	85.16	42.09	62.76	40.77	57.70
Adriaanse	90.08	49.68	55.31	34.73	57.45
Lwandle (Formal)	79.71	41.88	58.09	48.15	56.96
Weltevreden (Mitchell's Plain)	72.49	50.32	69.68	35.00	56.87
The Hague	88.48	46.13	63.03	28.54	56.55
Valhalla Park	89.56	43.68	58.47	33.65	56.34
Belhar 10	91.36	36.11	48.30	45.58	55.34
Langa (Formal)	68.32	46.63	65.75	40.45	55.29
Philippi (Agricultural Holdings)	86.72	12.19	67.60	51.53	54.51
Belhar 13	86.78	52.84	55.01	22.59	54.31
Tarentaalplaas	89.15	30.02	52.02	43.30	53.62
Sir Lowry's Pass (Formal)	82.43	30.41	59.51	38.95	52.83
Schaap Kraal	77.57	25.53	53.43	52.44	52.24

Spatial Variations in Levels of Living

SUBURB	% ADULTS (20+) WITH HIGHEST QUALIFICATION < MATRIC	% OF ECONOMICALLY ACTIVE UNEMPLOYED	% HOUSEHOLDS EARNING < R19200 PA	% OF LABOUR FORCE IN UNSKILLED OCCUPATIONS	S.E.S. INDEX
Protea Park	86.83	38.31	41.12	40.76	51.76
Montagu's Gift (Small Holdings)	82.18	12.39	51.24	59.38	51.30
Guguletu (Formal)	68.51	49.67	50.40	36.38	51.24
Khayelitsha T1-V1	64.48	44.11	56.97	37.76	50.83
Eureka	86.68	38.79	41.75	33.92	50.29
Hanover Park	86.32	38.09	47.68	28.96	50.26
Manenberg	86.25	37.84	48.62	27.70	50.10
Greenlands	84.36	33.40	43.54	39.07	50.09
Somerset West (Non Urban)	74.21	28.28	58.04	39.65	50.05
Eindehoven	87.29	34.76	50.40	27.17	49.91
Uitsig (Elsiesrivier)	83.82	35.60	48.84	30.38	49.66
Leonsdale	84.92	38.57	44.77	29.93	49.55
Kleinvlei	83.06	29.49	41.77	42.30	49.16
Avonwood	85.25	44.14	37.75	27.78	48.73
Tafelsig	86.96	38.65	43.55	25.50	48.67
Lavender Hill	85.94	33.24	46.16	28.89	48.56
Casablanca	86.34	21.18	45.92	40.37	48.45
Belhar 12	84.41	32.06	39.43	36.22	48.03
Parkwood	86.08	33.03	41.32	31.07	47.88
Epping Forest	87.65	40.17	32.00	31.35	47.79
Garden Village	84.04	30.28	40.17	34.28	47.19
Khayelitsha T1-V2	61.59	43.16	44.72	39.17	47.16
Mandela Park	65.91	34.86	50.50	36.66	46.98
Bonteheuwel	87.17	36.07	39.12	24.50	46.72
The Range	85.60	38.42	37.22	24.00	46.31
Atlantis	69.48	18.08	46.59	50.63	46.20
Philippi East	73.72	37.22	42.06	31.02	46.01
Roosendaal (Blue Downs)	84.70	27.56	41.18	28.50	45.49
Voorbrug	87.06	31.07	40.09	23.69	45.48
Nooitgedacht	81.94	36.26	36.09	27.09	45.35
Stratford Green	80.57	34.07	23.15	41.44	44.81
Connaught	83.12	36.32	34.68	24.79	44.73
Hout Bay Harbour	81.02	25.07	37.13	35.50	44.68
Excelsior	65.79	8.33	50.00	52.63	44.19
Morningstar	81.69	18.83	31.98	43.34	43.96
Weltevreden (Strand)	70.49	31.98	45.36	27.93	43.94
Maitland Garden Village	85.73	31.37	29.51	28.20	43.70
Robinvale	76.28	32.46	36.29	28.91	43.49
Pella Mission Station	84.09	15.81	34.06	39.92	43.47
Seawinds	84.34	25.93	36.13	27.47	43.47
Kewtown	83.69	33.23	33.71	21.37	43.00
Belhar 16	84.29	29.56	24.76	32.24	42.71
Heideveld	80.18	31.41	37.90	21.20	42.67
Eastridge	82.94	30.76	31.02	24.72	42.36
Bishop Lavis	81.44	31.78	34.79	21.41	42.36
Mountainview (Strand)	85.15	18.45	22.74	42.96	42.33
Camphill Village	31.45	0.00	100.00	37.50	42.24
Belhar 3	78.18	34.40	29.20	27.16	42.24
Highgate	79.16	24.99	30.95	33.33	42.11
Weltevreden Valley	66.11	34.96	47.65	19.67	42.10
Mamre	75.59	28.63	34.66	29.06	41.99
Zevendal	60.00	5.08	51.70	50.85	41.91

Source: 2001 Census, Statistics South Africa

APPENDIX 2: MAP OF S.E.S. INDEXES FOR THE CITY OF CAPE TOWN



APPENDIX 3: TABLE OF SERVICE LEVEL INDEXES FOR THE CITY OF CAPE TOWN (WORST 20 % OF SUBURBS)

SUBURB	% Households living in Informal Dwellings	% Households with no access to electricity for lighting	% Households with no flush or chemical toilet	% Households with no potable water on-site or in-dwelling	% Households with no refuse removal by local authority weekly or less	Service Index
Lwandle (Informal)	92.24	95.54	90.83	95.17	94.80	93.72
Welgelegen	54.21	97.40	96.36	97.22	92.46	87.53
Modderdam	81.34	84.11	85.24	85.03	85.95	84.33
Airport Informal	95.10	95.08	96.32	96.93	28.69	82.42
Red Hill	97.15	94.30	94.30	94.30	31.36	82.28
Chris Nissen Park	81.50	81.50	81.50	81.50	81.50	81.50
Wallacedene (Part 2)	98.40	95.24	98.41	99.21	13.73	81.00
Vissershok	100.00	100.00	2.69	100.00	100.00	80.54
Witsand (Part 2)	100.00	98.70	100.00	100.00	0.00	79.74
Nomzano (Informal)	87.50	85.69	71.70	92.52	57.53	78.99
Langa (Informal)	97.12	81.33	97.45	96.42	13.75	77.21
Witsand (Part 1)	89.67	99.54	85.97	97.70	0.92	74.76
Guguletu (Informal)	93.56	73.36	95.62	96.20	8.69	73.49
Crossroads (Guguletu)	95.67	69.79	95.91	96.70	9.26	73.47
Nyanga (Informal)	97.93	64.69	98.50	98.95	6.65	73.34
Mfuleni (Informal)	96.38	85.90	56.18	99.53	27.86	73.17
Khayelitsha T2-V2b	91.52	19.42	97.44	98.80	48.46	71.13
Strand (Informal)	83.81	93.06	83.81	93.06	0.00	70.75
Du Noon (Informal)	85.11	92.53	35.02	98.93	30.64	68.45
Lekkerwater	53.94	94.06	45.15	100.00	48.57	68.34
Crossroads (Informal)	79.95	76.69	81.88	76.90	21.38	67.36
Khayelitsha (Informal)	91.95	38.01	95.73	95.78	14.74	67.24
Imajamojea	68.85	59.37	67.74	81.20	44.44	64.32
Khayelitsha Site C (Part 1)	93.47	49.30	86.67	86.87	0.99	63.46
Bridgewater Ext 1 (Lwandle)	98.88	14.60	93.26	92.61	0.00	59.87
Sir Lowry's Pass (Informal)	40.37	54.50	83.54	78.78	39.14	59.27
Schaap Kraal	36.58	45.28	60.82	62.24	61.53	53.29
Philippi (Agricultural Holdings)	15.64	37.94	54.06	52.24	76.23	47.22
Khayelitsha T1-V3	71.53	50.63	48.13	52.50	6.54	45.87
Imizamo Yetho	92.72	46.19	33.93	51.11	0.31	44.85
Philippi	55.78	49.36	44.60	46.35	27.98	44.81
Khayelitsha T1-V4	70.29	51.21	49.04	51.15	1.39	44.62
Wallacedene (Part 1)	84.97	51.10	32.09	50.37	3.67	44.44
Montagu's Gift (Small Holdings)	20.49	18.65	52.13	41.30	74.03	41.32
Atlantis	10.74	28.77	35.74	39.23	85.18	39.93
Somerset West (Non Urban)	28.82	36.01	42.32	40.69	51.39	39.85
Zevendal	0.00	12.83	41.19	36.06	94.87	36.99
Drift Sands	49.66	45.65	21.89	53.92	0.53	34.33
Ezimbacwini	50.42	13.94	16.45	71.76	5.65	31.64
Lwandle (Formal)	35.23	43.32	4.05	39.28	35.23	31.42
Brackenfell	14.85	23.31	26.81	32.64	56.59	30.84
Wimbledon	29.84	32.36	29.51	29.78	30.06	30.31
Excelsior	11.11	33.33	33.33	38.89	33.33	30.00
Admirals Park	1.65	16.53	23.15	33.07	68.05	28.49
Khayelitsha Site C (Part 2)	94.13	13.90	8.62	21.84	0.36	27.77
Philippi East	30.45	25.22	28.49	34.04	17.42	27.12
Helderberg (Small Holdings)	0.00	0.00	11.61	26.11	77.30	23.00
Joostenberg	4.36	0.00	2.13	14.93	91.47	22.58
Sunnyacres	94.35	13.17	0.81	2.42	0.00	22.15
Pella Mission Station	6.09	12.18	57.16	16.75	13.70	21.18
Noordhoek	96.65	8.56	0.00	0.00	0.00	21.04
Masiphumelele	89.39	6.82	3.09	1.88	0.22	20.28
Camphill Village	0.00	0.00	0.00	100.00	0.00	20.00
Erinvale	0.00	0.00	0.00	0.00	100.00	20.00
Gersham	14.86	6.95	17.70	19.24	28.65	17.48
Sunbird Park	15.93	17.93	20.61	19.04	13.25	17.35
Fisantkraal (Part 1)	12.98	58.91	5.88	7.84	0.00	17.12
Khayelitsha T3-V5	77.02	4.47	1.01	1.94	0.19	16.93
Langa (Formal)	35.97	14.12	9.06	22.23	0.27	16.33
Maitland Garden Village	11.23	4.93	7.39	56.93	0.00	16.10
Bloekombos	5.56	60.80	2.02	2.90	1.78	14.61
Harare	60.53	4.07	1.30	5.23	0.34	14.29
Griffiths Mthenge	61.33	4.20	1.41	2.60	0.63	14.03
Khayelitsha T3-V3	54.00	3.29	1.42	9.97	0.23	13.78
Nomzano (Formal)	24.22	6.84	1.70	28.04	4.19	13.00
Khayelitsha T2-V1	18.78	6.28	18.13	17.57	0.00	12.15
Croydon	0.00	0.00	6.25	9.38	40.63	11.25
Avonwood	4.47	5.00	3.00	42.05	0.67	11.04
Nyanga (Formal)	30.25	8.57	4.57	9.87	1.51	10.95

Spatial Variations in Levels of Living

SUBURB	% Households living in Informal Dwellings	% Households with no access to electricity for lighting	% Households with no flush or chemical toilet	% Households with no potable water on-site or in-dwelling	% Households with no refuse removal by local authority weekly or less	Service Index
Gatesville	9.04	9.77	9.35	18.45	8.08	10.94
Fisantkraal (Part 2)	11.06	28.52	12.64	1.67	0.00	10.78
Kleinbosch	0.00	0.00	0.00	53.54	0.00	10.71
Khayelitsha T1-V1	18.87	7.66	11.05	11.71	0.00	9.86
Mfuleni (Formal)	12.86	12.23	9.13	11.12	3.59	9.79
Joe Slovo Park	27.72	8.43	1.53	9.66	1.27	9.72
Hout Bay Harbour	21.01	3.21	10.66	11.74	0.99	9.52
Kleinvlei	14.45	14.29	8.63	8.09	1.28	9.35
Foreshore	1.82	12.07	12.07	8.62	12.07	9.33
Kalkfontein	26.27	6.02	6.84	6.90	0.36	9.28
Erinvale Estates	0.00	0.84	4.10	0.00	39.84	8.96
Garden Village	20.86	3.89	4.86	14.58	0.00	8.84
Muizenberg	10.24	9.37	7.47	9.27	6.91	8.65
Onverwacht	10.68	7.12	8.90	7.12	8.90	8.54
Hazendal	16.59	0.95	18.49	5.71	0.32	8.41
Pine Place	3.40	1.70	6.24	30.12	0.00	8.29
Weltevreden (Strand)	18.24	3.73	8.55	10.75	0.00	8.25
Boulders	0.00	0.00	5.88	35.29	0.00	8.23
Belhar 10	10.17	9.18	10.07	10.07	0.00	7.90
Charlesville	1.75	0.00	3.50	31.60	1.75	7.72
Bongweni	34.25	1.99	0.50	1.49	0.00	7.65
Weltevreden (Mitchell's Plain)	15.28	9.00	4.03	3.02	6.87	7.64
Epping Forest	21.88	9.61	2.22	3.49	0.32	7.50
Adriaanse	1.95	9.80	0.95	2.14	21.68	7.30
Clovelly	0.00	0.00	1.53	34.68	0.00	7.24
Macassar	10.68	8.36	8.54	7.19	1.38	7.23
Du Noon (Formal)	4.74	15.30	3.19	3.62	4.99	6.37
Weltevreden Valley	15.19	4.62	1.79	8.76	0.67	6.21
Leonsdale	2.06	7.83	4.37	11.34	5.41	6.20
Casablanca	1.87	13.25	1.85	13.87	0.00	6.17
Highgate	6.69	0.00	8.36	6.69	8.36	6.02
The Range	6.31	1.57	5.76	3.66	12.36	5.93
Bayview Village	2.25	2.25	6.75	4.50	13.51	5.85
Marconi Beam	8.61	9.60	3.60	3.60	3.60	5.80
Surrey Estate	1.49	3.68	2.25	19.79	1.23	5.69
Seawinds	14.46	0.00	7.12	6.85	0.00	5.69
Belhar 11	1.73	10.35	10.35	5.18	0.00	5.52
The Hague	2.63	1.38	5.53	17.63	0.39	5.51
Crossroads (Formal)	9.06	3.49	3.05	7.92	3.84	5.47
Guguletu (Formal)	10.33	4.89	2.46	7.01	2.63	5.46
Bishop Lavis	12.12	4.35	4.39	6.07	0.12	5.41
Sir Lowry's Pass (Formal)	3.89	3.52	10.22	9.16	0.00	5.36
Primrose Park	6.00	4.50	5.25	5.25	4.50	5.10
Bellville Park	0.00	0.00	0.00	25.00	0.00	5.00
Langerberg Glen	0.00	4.12	4.12	4.12	12.35	4.94
Parkwood	9.20	0.86	7.21	6.15	1.11	4.91
Valhalla Park	7.89	1.68	5.82	8.90	0.14	4.89
Whispering Pines	0.00	0.00	4.42	8.85	10.32	4.72
Lavender Hill	7.88	0.80	5.44	8.77	0.40	4.66
Belhar 4	2.23	1.66	4.44	13.84	1.11	4.66
Retreat	6.02	1.16	6.04	9.79	0.19	4.64

Source: 2001 Census, Statistics South Africa

APPENDIX 5: TABLE OF LEVELS OF LIVING INDEXES FOR THE CITY OF CAPE TOWN

SUBURB	% Adults (20+) with highest qualification < Matric	% of economically active unemployed	% Households earning < R19300 pa	% of labour force in unskilled occupations	S.E.S. Index	% Households living in Informal Dwellings	% Households with no access to electricity for lighting	% Households with no flush or chemical toilet	% Households with no potable water on-site or in-dwelling	% Households with no refuse removal by local authority weekly or less	Service Index	Levels of Living Index
Lwandle (Informal)	89.74	61.96	92.41	52.82	74.23	92.24	95.54	90.83	95.17	94.80	93.72	83.97
Vissershok	100.00	75.03	93.86	47.37	79.07	100.00	100.00	2.69	100.00	100.00	80.54	79.80
Chris Nissen Park	100.00	58.33	68.77	80.00	76.78	81.50	81.50	81.50	81.50	81.50	81.50	79.14
Welgelegen	89.44	56.70	82.87	52.54	70.39	54.21	97.40	96.36	97.22	92.46	87.53	78.96
Wallacedene (Part 2)	93.06	58.12	85.80	49.23	71.55	98.40	95.24	98.41	99.21	13.73	81.00	76.28
Nomzano (Informal)	82.95	54.23	86.12	60.49	70.95	87.50	85.69	71.70	92.52	57.53	78.99	74.97
Airport Informal	91.35	33.77	77.69	56.36	64.79	95.10	95.08	96.32	96.93	28.69	82.42	73.61
Mfuleni (Informal)	88.27	64.89	88.87	53.24	73.82	96.38	85.90	56.18	99.53	27.86	73.17	73.49
Modderdam	75.14	64.06	80.72	28.62	62.14	81.34	84.11	85.24	85.03	85.95	84.33	73.23
Langa (Informal)	80.81	56.05	85.15	46.10	67.03	97.12	81.33	97.45	96.42	13.75	77.21	72.12
Du Noon (Informal)	92.15	69.77	89.31	45.28	74.13	85.11	92.53	35.02	98.93	30.64	68.45	71.29
Nyanga (Informal)	84.09	58.80	84.31	48.81	69.00	97.93	64.69	98.50	98.95	6.65	73.34	71.17
Lekkerwater	91.21	55.63	84.27	62.74	73.46	53.94	94.06	45.15	100.00	48.57	68.34	70.90
Guguletu (Informal)	81.84	55.20	84.19	50.24	67.87	93.56	73.36	95.62	96.20	8.69	73.49	70.68
Red Hill	95.30	24.61	67.47	45.86	58.31	97.15	94.30	94.30	94.30	31.36	82.28	70.30
Crossroads (Guguletu)	81.25	57.34	80.69	45.89	66.29	95.67	69.79	95.91	96.70	9.26	73.47	69.88
Witsand (Part 2)	84.86	43.18	89.27	14.63	57.99	100.00	98.70	100.00	100.00	0.00	79.74	68.86
Witsand (Part 1)	81.40	46.11	83.86	39.70	62.77	89.67	99.54	85.97	97.70	0.92	74.76	68.76
Khayelitsha T2-V2b	79.68	57.24	87.22	41.14	66.32	91.52	19.42	97.44	98.80	48.46	71.13	68.72
Crossroads (Informal)	84.84	55.89	85.43	46.51	68.17	79.95	76.69	81.88	76.90	21.38	67.36	67.76
Khayelitsha (Informal)	80.36	54.12	83.34	47.34	66.29	91.95	38.01	95.73	95.78	14.74	67.24	66.77
Bridgewater Ext 1 (Lwandle)	80.22	62.11	93.22	58.58	73.53	98.88	14.60	93.26	92.61	0.00	59.87	66.70
Imajamojea	90.87	47.97	77.85	51.66	67.09	68.85	59.37	67.74	81.20	44.44	64.32	65.70
Strand (Informal)	86.88	34.23	78.10	41.67	60.22	83.81	93.06	83.81	93.06	0.00	70.75	65.48
Khayelitsha Site C (Part 1)	83.79	57.20	80.94	45.79	66.93	93.47	49.30	86.67	86.87	0.99	63.46	65.20
Sir Lowry's Pass (Informal)	89.76	25.25	69.17	54.50	59.67	40.37	54.50	83.54	78.78	39.14	59.27	59.47
Wallacedene (Part 1)	85.59	51.72	79.54	54.97	67.96	84.97	51.10	32.09	50.37	3.67	44.44	56.20
Philippi	79.59	59.00	82.95	46.29	66.96	55.78	49.36	44.60	46.35	27.98	44.81	55.89
Khayelitsha T1-V3	77.47	53.93	78.08	52.34	65.46	71.53	50.63	48.13	52.50	6.54	45.87	55.66
Khayelitsha T1-V4	79.07	52.86	78.81	48.51	64.81	70.29	51.21	49.04	51.15	1.39	44.62	54.71
Imizamo Yetho	80.19	45.99	70.26	57.68	63.53	92.72	46.19	33.93	51.11	0.31	44.85	54.19

Spatial Variations in Levels of Living

SUBURB	% Adults (20+) with highest qualification < Matric	% of economically active unemployed	% Households earning < R19300 pa	% of labour force in unskilled occupations	S.E.S. Index	% Households living in Informal Dwellings	% Households with no access to electricity for lighting	% Households with no flush or chemical toilet	% Households with no potable water on-site or in-dwelling	% Households with no refuse removal by local authority weekly or less	Service Index	Levels of Living Index
Schaap Kraal	77.57	25.53	53.43	52.44	52.24	36.58	45.28	60.82	62.24	61.53	53.29	52.77
Philippi (Agricultural Holdings)	86.72	12.19	67.60	51.53	54.51	15.64	37.94	54.06	52.24	76.23	47.22	50.87
Drift Sands	77.91	63.42	81.15	34.35	64.21	49.66	45.65	21.89	53.92	0.53	34.33	49.27
Wimbleton	89.91	53.79	75.89	45.02	66.15	29.84	32.36	29.51	29.78	30.06	30.31	48.23
Ezimbacwini	78.70	48.06	75.71	54.34	64.20	50.42	13.94	16.45	71.76	5.65	31.64	47.92
Sunnyacres	82.37	59.78	82.38	65.57	72.53	94.35	13.17	0.81	2.42	0.00	22.15	47.34
Khayelitsha Site C (Part 2)	81.25	56.11	71.18	51.02	64.89	94.13	13.90	8.62	21.84	0.36	27.77	46.33
Montagu's Gift (Small Holdings)	82.18	12.39	51.24	59.38	51.30	20.49	18.65	52.13	41.30	74.03	41.32	46.31
Masiphumelele	78.86	60.55	83.68	55.67	69.69	89.39	6.82	3.09	1.88	0.22	20.28	44.99
Somerset West (Non Urban)	74.21	28.28	58.04	39.65	50.05	28.82	36.01	42.32	40.69	51.39	39.85	44.95
Lwandle (Formal)	79.71	41.88	58.09	48.15	56.96	35.23	43.32	4.05	39.28	35.23	31.42	44.19
Bloekombos	88.90	68.60	90.77	44.63	73.23	5.56	60.80	2.02	2.90	1.78	14.61	43.92
Atlantis	69.48	18.08	46.59	50.63	46.20	10.74	28.77	35.74	39.23	85.18	39.93	43.06
Noordhoek	77.81	49.27	68.06	50.27	61.35	96.65	8.56	0.00	0.00	0.00	21.04	41.20
Fisantkraal (Part 1)	92.01	38.71	72.75	56.28	64.94	12.98	58.91	5.88	7.84	0.00	17.12	41.03
Zevendal	60.00	5.08	51.70	50.85	41.91	0.00	12.83	41.19	36.06	94.87	36.99	39.45
Nomzano (Formal)	84.80	44.58	78.24	55.81	65.86	24.22	6.84	1.70	28.04	4.19	13.00	39.43
Khayelitsha T3-V5	79.50	51.56	71.89	43.55	61.63	77.02	4.47	1.01	1.94	0.19	16.93	39.28
Khayelitsha T3-V3	80.32	51.31	72.34	44.55	62.13	54.00	3.29	1.42	9.97	0.23	13.78	37.96
Kraaifontein East	93.94	48.32	81.04	62.66	71.49	2.96	12.65	1.47	1.47	0.73	3.86	37.67
Harare	76.66	50.55	73.49	42.87	60.89	60.53	4.07	1.30	5.23	0.34	14.29	37.59
Excelsior	65.79	8.33	50.00	52.63	44.19	11.11	33.33	33.33	38.89	33.33	30.00	37.09
Griffiths Mthenge	76.81	48.19	68.08	47.41	60.12	61.33	4.20	1.41	2.60	0.63	14.03	37.08
Philippi East	73.72	37.22	42.06	31.02	46.01	30.45	25.22	28.49	34.04	17.42	27.12	36.56
Fisantkraal (Part 2)	91.10	44.29	64.51	48.86	62.19	11.06	28.52	12.64	1.67	0.00	10.78	36.48
Nyanga (Formal)	76.75	55.17	67.35	47.24	61.63	30.25	8.57	4.57	9.87	1.51	10.95	36.29
Langa (Formal)	68.32	46.63	65.75	40.45	55.29	35.97	14.12	9.06	22.23	0.27	16.33	35.81
Mfuleni (Formal)	78.52	51.26	70.75	45.82	61.59	12.86	12.23	9.13	11.12	3.59	9.79	35.69
Brackenfell	69.60	10.59	38.76	41.60	40.14	14.85	23.31	26.81	32.64	56.59	30.84	35.49
Du Noon (Formal)	80.57	51.35	78.23	46.02	64.04	4.74	15.30	3.19	3.62	4.99	6.37	35.21
Joe Slovo Park	80.74	42.61	68.19	43.68	58.81	27.72	8.43	1.53	9.66	1.27	9.72	34.26
Crossroads (Formal)	77.53	52.45	72.75	47.70	62.61	9.06	3.49	3.05	7.92	3.84	5.47	34.04

Spatial Variations in Levels of Living

SUBURB	% Adults (20+) with highest qualification < Matric	% of economically active unemployed	% Households earning < R19300 pa	% of labour force in unskilled occupations	S.E.S. Index	% Households living in Informal Dwellings	% Households with no access to electricity for lighting	% Households with no flush or chemical toilet	% Households with no potable water on-site or in-dwelling	% Households with no refuse removal by local authority weekly or less	Service Index	Levels of Living Index
Kalkfontein	85.16	42.09	62.76	40.77	57.70	26.27	6.02	6.84	6.90	0.36	9.28	33.49
Delft South	81.48	56.57	70.88	34.31	60.81	11.17	2.88	3.95	3.91	0.43	4.47	32.64
Adriaanse	90.08	49.68	55.31	34.73	57.45	1.95	9.80	0.95	2.14	21.68	7.30	32.38
Pella Mission Station	84.09	15.81	34.06	39.92	43.47	6.09	12.18	57.16	16.75	13.70	21.18	32.32
Weltevreden (Mitchell's Plain)	72.49	50.32	69.68	35.00	56.87	15.28	9.00	4.03	3.02	6.87	7.64	32.26
Belhar 10	91.36	36.11	48.30	45.58	55.34	10.17	9.18	10.07	10.07	0.00	7.90	31.62
Westbank	84.98	49.15	71.34	37.38	60.71	2.33	0.80	2.41	2.85	0.10	1.70	31.21
Camphill Village	31.45	0.00	100.00	37.50	42.24	0.00	0.00	0.00	100.00	0.00	20.00	31.12
The Hague	88.48	46.13	63.03	28.54	56.55	2.63	1.38	5.53	17.63	0.39	5.51	31.03
Khayelitsha (Formal)	74.80	49.44	78.83	35.40	59.62	2.48	2.59	1.49	2.22	0.21	1.80	30.71
Valhalla Park	89.56	43.68	58.47	33.65	56.34	7.89	1.68	5.82	8.90	0.14	4.89	30.61
Vogelvlei	84.86	47.97	65.86	39.83	59.63	2.72	0.74	1.26	2.12	0.21	1.41	30.52
Khayelitsha T1-V1	64.48	44.11	56.97	37.76	50.83	18.87	7.66	11.05	11.71	0.00	9.86	30.34
Maitland Garden Village	85.73	31.37	29.51	28.20	43.70	11.23	4.93	7.39	56.93	0.00	16.10	29.90
Avonwood	85.25	44.14	37.75	27.78	48.73	4.47	5.00	3.00	42.05	0.67	11.04	29.88
Admirals Park	51.22	5.83	28.29	35.98	30.33	1.65	16.53	23.15	33.07	68.05	28.49	29.41
Kleinvlei	83.06	29.49	41.77	42.30	49.16	14.45	14.29	8.63	8.09	1.28	9.35	29.25
Sir Lowry's Pass (Formal)	82.43	30.41	59.51	38.95	52.83	3.89	3.52	10.22	9.16	0.00	5.36	29.09
Belhar 13	86.78	52.84	55.01	22.59	54.31	2.34	6.41	4.08	2.91	0.00	3.15	28.73
Guguletu (Formal)	68.51	49.67	50.40	36.38	51.24	10.33	4.89	2.46	7.01	2.63	5.46	28.35
Garden Village	84.04	30.28	40.17	34.28	47.19	20.86	3.89	4.86	14.58	0.00	8.84	28.02
Tarentaalplaas	89.15	30.02	52.02	43.30	53.62	6.43	0.82	2.57	1.28	0.00	2.22	27.92
Leonsdale	84.92	38.57	44.77	29.93	49.55	2.06	7.83	4.37	11.34	5.41	6.20	27.87
Epping Forest	87.65	40.17	32.00	31.35	47.79	21.88	9.61	2.22	3.49	0.32	7.50	27.65
Casablanca	86.34	21.18	45.92	40.37	48.45	1.87	13.25	1.85	13.87	0.00	6.17	27.31
Manenberg	86.25	37.84	48.62	27.70	50.10	8.03	0.77	4.06	8.15	0.39	4.28	27.19
Hout Bay Harbour	81.02	25.07	37.13	35.50	44.68	21.01	3.21	10.66	11.74	0.99	9.52	27.10
Eureka	86.68	38.79	41.75	33.92	50.29	3.94	3.93	4.64	3.90	2.44	3.77	27.03
Hanover Park	86.32	38.09	47.68	28.96	50.26	6.65	0.56	5.42	4.60	0.35	3.52	26.89
Eindehoven	87.29	34.76	50.40	27.17	49.91	2.09	0.46	3.25	11.52	0.00	3.46	26.68
Lavender Hill	85.94	33.24	46.16	28.89	48.56	7.88	0.80	5.44	8.77	0.40	4.66	26.61
Tafelsig	86.96	38.65	43.55	25.50	48.67	6.97	2.26	4.31	7.60	0.29	4.29	26.48
Erinvale	32.99	2.89	68.49	27.37	32.94	0.00	0.00	0.00	0.00	100.00	20.00	26.47

Spatial Variations in Levels of Living

SUBURB	% Adults (20+) with highest qualification < Matric	% of economically active unemployed	% Households earning < R19300 pa	% of labour force in unskilled occupations	S.E.S. Index	% Households living in Informal Dwellings	% Households with no access to electricity for lighting	% Households with no flush or chemical toilet	% Households with no potable water on-site or in-dwelling	% Households with no refuse removal by local authority weekly or less	Service Index	Levels of Living Index
Protea Park	86.83	38.31	41.12	40.76	51.76	0.00	1.13	2.25	2.25	0.00	1.13	26.44
Parkwood	86.08	33.03	41.32	31.07	47.88	9.20	0.86	7.21	6.15	1.11	4.91	26.39
Uitsig (Elsiesrivier)	83.82	35.60	48.84	30.38	49.66	8.20	4.46	0.95	1.45	0.47	3.11	26.38
Greenlands	84.36	33.40	43.54	39.07	50.09	1.92	0.96	6.83	2.88	0.00	2.52	26.31
The Range	85.60	38.42	37.22	24.00	46.31	6.31	1.57	5.76	3.66	12.36	5.93	26.12
Weltevreden (Strand)	70.49	31.98	45.36	27.93	43.94	18.24	3.73	8.55	10.75	0.00	8.25	26.10
Belhar 12	84.41	32.06	39.43	36.22	48.03	2.38	3.53	7.91	2.36	0.00	3.24	25.63
Bonteheuwel	87.17	36.07	39.12	24.50	46.72	10.49	0.50	4.48	5.87	0.21	4.31	25.51
Khayelitsha T1-V2	61.59	43.16	44.72	39.17	47.16	4.10	1.50	2.28	3.18	0.21	2.25	24.71
Nooitgedacht	81.94	36.26	36.09	27.09	45.35	5.36	2.05	5.34	5.01	2.38	4.03	24.69
Seawinds	84.34	25.93	36.13	27.47	43.47	14.46	0.00	7.12	6.85	0.00	5.69	24.58
Macassar	79.02	20.51	33.73	32.81	41.52	10.68	8.36	8.54	7.19	1.38	7.23	24.37
Hazendal	77.52	28.57	36.04	18.71	40.21	16.59	0.95	18.49	5.71	0.32	8.41	24.31
Mandela Park	65.91	34.86	50.50	36.66	46.98	3.03	0.91	1.42	2.56	0.30	1.64	24.31
Khayelitsha T2-V1	49.59	33.53	37.20	24.69	36.25	18.78	6.28	18.13	17.57	0.00	12.15	24.20
Weltevreden Valley	66.11	34.96	47.65	19.67	42.10	15.19	4.62	1.79	8.76	0.67	6.21	24.15
Croydon	65.56	15.52	32.26	34.61	36.99	0.00	0.00	6.25	9.38	40.63	11.25	24.12
Roosendaal (Blue Downs)	84.70	27.56	41.18	28.50	45.49	4.47	0.32	4.00	4.28	0.21	2.66	24.07
Highgate	79.16	24.99	30.95	33.33	42.11	6.69	0.00	8.36	6.69	8.36	6.02	24.06
Voorbrug	87.06	31.07	40.09	23.69	45.48	3.35	0.00	3.91	5.29	0.17	2.54	24.01
Bishop Lavis	81.44	31.78	34.79	21.41	42.36	12.12	4.35	4.39	6.07	0.12	5.41	23.88
Connaught	83.12	36.32	34.68	24.79	44.73	4.12	3.74	1.71	2.78	0.43	2.56	23.64
Belhar 11	88.57	7.05	46.51	24.24	41.59	1.73	10.35	10.35	5.18	0.00	5.52	23.56
Helderberg (Small Holdings)	40.85	8.51	24.50	21.62	23.87	0.00	0.00	11.61	26.11	77.30	23.00	23.44
Stratford Green	80.57	34.07	23.15	41.44	44.81	8.01	0.00	0.00	1.60	0.00	1.92	23.36
Morningstar	81.69	18.83	31.98	43.34	43.96	3.64	1.21	2.43	3.64	2.43	2.67	23.32
Sunbird Park	60.48	17.67	22.45	15.23	28.96	15.93	17.93	20.61	19.04	13.25	17.35	23.15
Gersham	51.42	21.78	22.35	17.75	28.33	14.86	6.95	17.70	19.24	28.65	17.48	22.90
Heideveld	80.18	31.41	37.90	21.20	42.67	6.61	0.85	3.31	4.50	0.32	3.12	22.90
Ocean View	82.38	21.21	29.66	33.92	41.79	7.40	1.46	5.23	5.34	0.38	3.96	22.88
Clarkes	80.44	25.63	34.33	24.51	41.23	1.68	5.90	1.95	2.22	9.66	4.28	22.75
Mountainview (Strand)	85.15	18.45	22.74	42.96	42.33	3.51	8.77	1.75	1.75	0.00	3.16	22.74
Belhar 15	83.71	22.32	38.77	22.41	41.80	0.00	5.12	5.12	5.12	2.56	3.58	22.69

Spatial Variations in Levels of Living

SUBURB	% Adults (20+) with highest qualification < Matric	% of economically active unemployed	% Households earning < R19300 pa	% of labour force in unskilled occupations	S.E.S. Index	% Households living in Informal Dwellings	% Households with no access to electricity for lighting	% Households with no flush or chemical toilet	% Households with no potable water on-site or in-dwelling	% Households with no refuse removal by local authority weekly or less	Service Index	Levels of Living Index
Marconi Beam	66.04	27.70	34.48	27.96	39.05	8.61	9.60	3.60	3.60	3.60	5.80	22.42
Robinvale	76.28	32.46	36.29	28.91	43.49	1.94	1.22	1.70	1.94	0.00	1.36	22.42
Eersterivier South	79.23	32.53	24.49	29.12	41.34	5.06	1.37	5.03	4.58	0.46	3.30	22.32
Belhar 16	84.29	29.56	24.76	32.24	42.71	2.07	2.87	2.51	2.05	0.00	1.90	22.31
Kewtown	83.69	33.23	33.71	21.37	43.00	1.93	0.60	4.27	1.00	0.20	1.60	22.30
Belhar 3	78.18	34.40	29.20	27.16	42.24	2.04	5.24	1.57	2.75	0.00	2.32	22.28
Factreton	79.71	27.98	32.64	19.81	40.04	11.61	0.72	6.69	2.62	0.24	4.38	22.21
Scottsdene	76.95	23.46	25.25	36.94	40.65	7.67	1.62	1.13	5.63	2.32	3.67	22.16
Muizenberg	52.09	23.22	44.72	22.56	35.65	10.24	9.37	7.47	9.27	6.91	8.65	22.15
Bongweni	51.33	36.09	35.00	23.90	36.58	34.25	1.99	0.50	1.49	0.00	7.65	22.11
Eastridge	82.94	30.76	31.02	24.72	42.36	2.54	0.50	3.17	2.45	0.14	1.76	22.06
Rusthof	75.35	25.20	34.25	25.00	39.95	9.91	1.37	2.51	4.33	0.46	3.72	21.83
Pine Place	71.15	18.98	20.94	30.19	35.32	3.40	1.70	6.24	30.12	0.00	8.29	21.80
Bellville South (Bellville)	73.16	23.19	33.62	25.82	38.95	10.00	2.98	5.61	2.87	0.80	4.45	21.70
Mamre	75.59	28.63	34.66	29.06	41.99	1.36	2.03	2.20	0.68	0.51	1.36	21.67
Beacon Valley	81.29	29.60	31.98	22.99	41.47	3.35	0.56	2.06	3.13	0.17	1.85	21.66
Gustrow	76.11	20.38	36.41	28.57	40.37	4.35	0.33	5.35	3.03	1.00	2.81	21.59
Florida	77.92	26.79	33.35	25.33	40.85	3.53	3.89	2.64	0.81	0.41	2.26	21.55
Sherwood	80.68	29.35	30.36	23.41	40.95	4.90	0.21	2.54	1.27	0.00	1.78	21.37
Beverley Park	75.06	24.70	23.55	30.47	38.45	9.97	3.23	0.00	5.23	1.29	3.94	21.19
Ekuphumleni	58.74	30.78	37.72	34.32	40.39	2.73	0.90	0.00	5.41	0.00	1.81	21.10
Saxonsea	77.96	29.48	31.00	22.57	40.25	2.65	0.44	3.50	2.84	0.11	1.91	21.08
Lentegeur	80.12	26.85	31.77	22.70	40.36	1.76	0.49	2.59	3.32	0.34	1.70	21.03
Belhar 8	7.89	60.00	96.48	0.00	41.09	0.00	0.00	1.19	3.56	0.00	0.95	21.02
Avondale (Atlantis)	77.86	30.79	29.14	23.78	40.39	2.71	0.40	2.87	1.67	0.20	1.57	20.98
Joostenberg	32.55	2.97	24.57	14.85	18.74	4.36	0.00	2.13	14.93	91.47	22.58	20.66
Sheraton Park	78.30	23.86	30.80	28.81	40.44	0.00	0.00	0.00	3.25	0.00	0.65	20.55
Silvertown	79.96	23.46	34.58	13.89	37.97	3.59	0.75	5.06	5.07	0.00	2.89	20.43
Avon	76.89	23.94	31.94	14.13	36.73	4.18	0.70	0.70	5.57	7.66	3.76	20.24
Sillwood Heights	72.37	26.89	17.85	33.78	37.72	10.36	0.00	1.24	0.00	1.24	2.57	20.15
Belhar 9	83.88	18.09	21.94	28.00	37.98	0.00	3.73	7.47	0.00	0.00	2.24	20.11
Gatesville	57.82	11.84	29.53	17.90	29.27	9.04	9.77	9.35	18.45	8.08	10.94	20.11
Belhar 23	77.38	19.95	26.46	24.72	37.13	8.51	1.07	3.22	2.15	0.00	2.99	20.06

Spatial Variations in Levels of Living

SUBURB	% Adults (20+) with highest qualification < Matric	% of economically active unemployed	% Households earning < R19300 pa	% of labour force in unskilled occupations	S.E.S. Index	% Households living in Informal Dwellings	% Households with no access to electricity for lighting	% Households with no flush or chemical toilet	% Households with no potable water on-site or in-dwelling	% Households with no refuse removal by local authority weekly or less	Service Index	Levels of Living Index
Gill Cape	75.79	21.70	19.26	27.35	36.03	6.27	0.94	4.69	8.00	0.00	3.98	20.00
Woodlands	76.10	28.53	31.86	18.94	38.86	1.13	0.26	1.39	2.03	0.33	1.03	19.94
Ikwezi Park	56.41	32.46	32.98	23.44	36.32	8.05	1.68	1.26	4.20	0.42	3.12	19.72
Balvenie	73.60	27.63	31.34	18.93	37.88	1.48	2.66	0.59	2.37	0.30	1.48	19.68
Fairdale	72.89	19.53	26.37	34.52	38.33	0.00	0.00	2.53	2.53	0.00	1.01	19.67
Camelot	71.60	23.21	21.93	30.54	36.82	2.95	1.47	4.42	2.95	0.00	2.36	19.59
Lotus River	71.19	20.93	29.45	16.96	34.63	7.42	1.42	3.53	4.78	4.79	4.39	19.51
Hindle Park	74.70	20.76	22.97	25.84	36.07	0.00	6.81	1.70	3.41	0.00	2.38	19.23
Retreat	71.36	19.42	27.93	16.13	33.71	6.02	1.16	6.04	9.79	0.19	4.64	19.18
Cedardale	78.39	22.55	29.94	14.71	36.40	4.25	4.25	0.00	0.00	0.00	1.70	19.05
Hillcrest Heights	75.08	19.86	24.27	22.20	35.35	0.00	1.02	4.10	8.01	0.51	2.73	19.04
Perm Gardens	71.69	28.66	17.38	26.91	36.16	0.80	0.80	1.60	4.88	0.80	1.78	18.97
Belhar 19	76.67	25.06	20.59	19.20	35.38	0.95	1.88	4.71	4.24	0.47	2.45	18.92
Eikendal	68.09	22.75	22.74	24.92	34.63	4.24	1.00	3.29	6.88	0.14	3.11	18.87
Heather Park	73.91	18.68	21.67	25.38	34.91	8.49	3.74	0.00	1.87	0.00	2.82	18.87
Montagu's Gift (Urban)	74.24	20.90	26.97	19.09	35.30	3.48	0.63	3.03	3.22	0.63	2.20	18.75
Stratford	72.90	15.75	21.92	26.32	34.22	6.40	1.99	3.32	3.32	0.00	3.01	18.61
Erinvale Estates	46.65	13.78	22.20	30.28	28.23	0.00	0.84	4.10	0.00	39.84	8.96	18.59
Elsiesriver	69.31	19.88	26.68	17.73	33.40	5.40	3.61	3.50	4.89	1.00	3.68	18.54
Belhar 21	75.89	22.38	17.18	20.34	33.95	1.01	1.50	0.50	12.16	0.00	3.03	18.49
Matroosfontein	73.00	18.28	30.21	15.66	34.29	1.76	0.57	5.96	4.54	0.28	2.62	18.45
Ravensmead	67.49	21.69	20.06	20.76	32.50	3.25	1.81	3.30	10.98	0.41	3.95	18.23
Graceland	61.20	37.85	21.28	18.31	34.66	2.74	0.00	4.11	1.37	0.00	1.64	18.15
Malibu Village	67.59	20.63	23.12	16.09	31.86	10.53	2.98	4.35	3.24	0.00	4.22	18.04
Pinati	72.83	20.69	28.64	13.86	34.01	1.42	0.00	3.51	3.86	1.40	2.04	18.02
Bridgetown	78.15	18.94	29.34	13.12	34.89	0.56	0.27	2.43	2.18	0.27	1.14	18.01
Belhar 20	73.46	13.23	23.68	17.91	32.07	5.71	0.69	9.85	2.76	0.00	3.80	17.94
Rocklands	76.60	18.87	19.95	18.80	33.56	2.48	0.26	3.56	4.01	0.47	2.16	17.86
Elnor	63.88	20.78	23.24	17.77	31.42	8.38	1.40	5.59	5.59	0.00	4.19	17.80
Austinville	63.43	20.42	17.92	25.61	31.85	7.89	1.05	2.10	2.10	1.05	2.84	17.34
Steenberg	64.82	21.62	27.23	18.02	32.92	2.12	0.19	2.48	2.67	0.57	1.61	17.26
Sarepta	65.05	14.52	23.35	20.57	30.87	4.37	1.25	1.04	9.60	0.63	3.38	17.13
Brentwood Park	67.77	15.19	25.04	16.42	31.11	2.16	6.07	4.05	2.02	0.00	2.86	16.98

Spatial Variations in Levels of Living

SUBURB	% Adults (20+) with highest qualification < Matric	% of economically active unemployed	% Households earning < R19300 pa	% of labour force in unskilled occupations	S.E.S. Index	% Households living in Informal Dwellings	% Households with no access to electricity for lighting	% Households with no flush or chemical toilet	% Households with no potable water on-site or in-dwelling	% Households with no refuse removal by local authority weekly or less	Service Index	Levels of Living Index
Pelikan Park	57.32	20.57	26.78	12.52	29.30	3.36	5.28	5.28	8.21	0.59	4.54	16.92
Belhar 18	74.03	19.86	24.92	10.26	32.27	1.71	0.85	3.40	0.85	0.85	1.53	16.90
Belhar 14	69.38	17.39	26.30	9.63	30.68	4.63	0.00	1.54	9.26	0.00	3.09	16.88
Russels Rest	59.48	15.25	20.86	26.00	30.40	4.36	0.00	0.00	8.53	2.13	3.00	16.70
Tembani	46.39	39.64	33.54	10.19	32.44	0.00	0.00	1.59	3.18	0.00	0.95	16.70
Rosedale (Blue Downs)	64.10	21.28	16.03	19.55	30.24	4.06	0.58	6.38	4.06	0.00	3.02	16.63
Helderberg Park	66.72	24.94	19.58	18.66	32.48	1.54	0.00	1.54	0.00	0.00	0.62	16.55
Brooklyn	65.87	14.76	39.04	9.45	32.28	0.63	0.77	1.08	1.24	0.31	0.81	16.54
Belgravia (Athlone)	59.40	18.51	25.52	12.61	29.01	3.24	4.32	4.46	6.59	1.46	4.01	16.51
Forest Village	65.51	15.59	23.29	17.07	30.37	0.70	1.38	4.14	4.83	0.69	2.35	16.36
Maitland	62.90	18.86	23.26	12.72	29.44	4.31	1.54	1.47	8.12	0.42	3.17	16.30
Scottsville	61.24	20.09	20.60	21.42	30.84	3.09	0.92	0.62	4.07	0.00	1.74	16.29
Paarden Island	72.41	17.02	23.54	9.09	30.52	0.00	0.00	0.00	8.48	0.00	1.70	16.11
Surrey Estate	58.94	14.70	21.74	9.80	26.30	1.49	3.68	2.25	19.79	1.23	5.69	15.99
Newfields	66.15	20.14	19.74	12.21	29.56	3.50	1.01	3.04	2.70	1.69	2.39	15.97
Stratford Park	67.95	9.37	17.03	23.79	29.54	4.32	0.54	0.54	6.49	0.00	2.38	15.96
Foreshore	36.77	9.50	35.00	8.48	22.44	1.82	12.07	12.07	8.62	12.07	9.33	15.88
Ruyterwacht	70.64	13.25	23.65	10.38	29.48	3.06	1.43	3.39	2.32	1.07	2.25	15.87
Belhar	67.69	16.12	22.93	16.68	30.86	0.74	0.00	0.00	1.44	0.72	0.58	15.72
Portlands	69.24	18.75	18.97	12.77	29.93	1.30	0.20	2.12	3.57	0.35	1.51	15.72
Churchill	55.11	14.10	29.45	9.01	26.92	5.66	0.82	6.25	8.68	0.21	4.32	15.62
Riverton	62.77	14.58	27.48	12.49	29.33	2.78	3.57	0.40	1.99	0.79	1.91	15.62
Electric City	65.94	15.58	13.94	15.16	27.66	8.57	1.55	3.10	3.49	0.39	3.42	15.54
Silversands	64.67	20.35	15.03	17.83	29.47	0.63	0.63	0.00	1.89	1.89	1.01	15.24
Onverwacht	35.13	10.81	33.11	8.52	21.89	10.68	7.12	8.90	7.12	8.90	8.54	15.22
Belhar 4	55.97	17.04	19.72	9.97	25.68	2.23	1.66	4.44	13.84	1.11	4.66	15.17
Vasco	61.39	9.77	33.29	11.25	28.93	0.00	0.00	1.07	3.21	2.70	1.40	15.16
Zonnebloem	39.11	12.21	44.84	11.92	27.02	2.86	2.78	4.45	3.89	1.39	3.07	15.05
Wembly Park	62.99	17.38	10.33	13.90	26.15	0.00	3.11	3.11	6.22	6.22	3.73	14.94
Westridge (Mitchell's Plain)	68.15	17.73	16.94	12.13	28.74	0.58	0.21	1.22	3.18	0.14	1.07	14.90
Rugby	59.77	14.11	30.34	7.75	27.99	2.00	0.65	0.98	4.95	0.33	1.78	14.89
Primrose Park	57.49	14.32	15.90	9.28	24.25	6.00	4.50	5.25	5.25	4.50	5.10	14.67
Athlone	60.20	14.50	23.69	10.25	27.16	1.32	1.12	3.47	4.02	0.37	2.06	14.61

Spatial Variations in Levels of Living

SUBURB	% Adults (20+) with highest qualification < Matric	% of economically active unemployed	% Households earning < R19300 pa	% of labour force in unskilled occupations	S.E.S. Index	% Households living in Informal Dwellings	% Households with no access to electricity for lighting	% Households with no flush or chemical toilet	% Households with no potable water on-site or in-dwelling	% Households with no refuse removal by local authority weekly or less	Service Index	Levels of Living Index
Grassy Park	60.27	12.80	19.98	13.36	26.60	2.34	2.30	2.42	5.53	0.41	2.60	14.60
Mountainview (Cape town)	56.71	13.10	29.49	10.13	27.36	1.72	1.13	2.26	3.39	0.57	1.81	14.59
Forest Glade	59.86	17.77	10.59	17.15	26.34	1.15	1.15	2.30	9.22	0.00	2.76	14.55
Bellville Central	45.37	14.31	25.21	17.75	25.66	1.15	2.03	1.02	10.83	1.02	3.21	14.44
Forest Heights	58.17	15.28	16.17	15.83	26.36	2.45	1.89	5.44	1.89	0.27	2.39	14.38
Dennermere	65.14	11.65	13.83	16.35	26.74	1.10	0.55	1.37	6.69	0.00	1.94	14.34
Cravenby	50.31	13.36	23.21	16.97	25.96	0.00	2.98	3.48	5.47	0.99	2.58	14.27
Humanshof Ext1	36.14	17.65	30.27	13.65	24.43	5.21	2.54	2.54	7.62	2.54	4.09	14.26
Kensington	60.50	14.00	20.10	10.38	26.25	2.63	2.06	2.77	3.47	0.22	2.23	14.24
Charlesville	49.19	15.06	10.90	7.65	20.70	1.75	0.00	3.50	31.60	1.75	7.72	14.21
Coniston Park	66.09	11.90	12.20	11.14	25.33	1.69	0.56	5.16	6.21	1.13	2.95	14.14
Greenfield	57.87	14.49	11.54	17.64	25.39	2.74	1.10	3.29	6.28	0.55	2.79	14.09
Salt River	62.23	13.18	23.18	11.09	27.42	0.80	0.53	0.79	1.32	0.26	0.74	14.08
Clairwood	66.26	3.31	22.30	16.34	27.05	0.88	1.77	2.65	0.00	0.00	1.06	14.06
Beaconhill	61.32	8.01	13.84	17.05	25.06	0.63	4.31	1.23	9.07	0.00	3.05	14.05
Belhar 2	52.62	8.45	21.40	15.15	24.41	1.86	1.86	8.36	2.79	1.86	3.35	13.88
Welcome Estate	60.67	12.99	21.21	8.92	25.95	3.09	0.00	2.32	3.09	0.00	1.70	13.82
Woodstock	53.53	15.37	23.45	10.72	25.77	1.25	1.04	1.52	4.56	0.28	1.73	13.75
The Conifers	58.34	15.38	12.95	12.31	24.75	4.93	0.00	3.26	4.08	0.82	2.62	13.68
Kleinbosch	50.87	8.60	3.21	3.83	16.63	0.00	0.00	0.00	53.54	0.00	10.71	13.67
Schotsche Kloof	52.49	17.89	21.30	12.20	25.97	0.56	0.55	0.28	2.76	0.55	0.94	13.46
Gaylee	56.45	12.94	19.55	11.95	25.22	1.02	0.00	5.55	1.01	0.00	1.52	13.37
Hillview	62.57	8.50	11.97	14.66	24.43	1.59	0.00	4.78	3.18	0.00	1.91	13.17
Belmont Park	55.42	11.51	18.32	11.02	24.07	0.84	0.21	0.84	8.56	0.63	2.22	13.14
Westlake	40.45	16.77	23.29	16.83	24.34	0.40	0.40	1.47	4.46	0.40	1.43	12.88
Rylands	50.47	8.65	24.21	16.17	24.88	0.25	0.24	0.98	2.69	0.00	0.83	12.85
Vanguard Estate	57.98	7.72	18.09	7.68	22.87	2.68	0.89	2.67	5.46	1.34	2.61	12.74
Firgrove	59.01	8.47	13.02	15.00	23.88	0.00	0.69	4.11	1.37	0.69	1.37	12.62
Cape Town CBD	34.16	16.00	27.38	8.03	21.39	1.64	2.08	2.60	8.32	2.08	3.34	12.37
Bellrail	54.09	1.46	16.19	16.59	22.08	1.21	0.00	3.59	2.39	5.98	2.63	12.36
Langerberg Glen	39.40	0.00	15.86	23.68	19.74	0.00	4.12	4.12	4.12	12.35	4.94	12.34
Sandrift	50.06	12.70	17.27	5.10	21.28	0.36	0.00	1.08	14.74	0.00	3.24	12.26
Peerless Park West	52.73	12.79	18.34	9.21	23.27	0.85	0.00	2.55	1.70	0.00	1.02	12.14

Spatial Variations in Levels of Living

SUBURB	% Adults (20+) with highest qualification < Matric	% of economically active unemployed	% Households earning < R19300 pa	% of labour force in unskilled occupations	S.E.S. Index	% Households living in Informal Dwellings	% Households with no access to electricity for lighting	% Households with no flush or chemical toilet	% Households with no potable water on-site or in-dwelling	% Households with no refuse removal by local authority weekly or less	Service Index	Levels of Living Index
Bellville Park	30.00	3.85	33.33	8.33	18.88	0.00	0.00	0.00	25.00	0.00	5.00	11.94
Tuscany Glen	53.22	12.69	13.85	11.15	22.73	0.00	0.82	0.82	3.73	0.00	1.07	11.90
Fountain Village	50.52	19.00	14.10	10.15	23.44	0.00	1.73	0.00	0.00	0.00	0.35	11.89
Phoenix	50.59	14.26	13.31	14.19	23.09	0.43	1.30	0.43	1.30	0.00	0.69	11.89
Penlyn Estate	45.28	12.75	19.64	9.06	21.68	0.00	1.46	2.92	4.87	0.49	1.95	11.82
Devon Park	50.62	12.45	10.80	12.26	21.53	0.00	0.00	0.00	10.44	0.00	2.09	11.81
Belhar 7	53.33	13.43	11.72	11.49	22.49	0.00	0.00	1.63	3.25	0.00	0.98	11.73
Strandfontein	56.33	11.01	12.00	7.08	21.61	0.89	0.99	1.55	3.42	0.69	1.51	11.56
Belhar 1	51.83	3.99	14.98	14.11	21.23	1.89	0.00	1.88	4.69	0.00	1.69	11.46
The Links (Small Holdings)	46.07	6.35	16.45	12.28	20.29	0.00	0.00	2.42	2.42	7.26	2.42	11.35
Belthorn Estate	48.68	8.24	20.67	6.79	21.10	1.15	0.85	1.99	3.66	0.00	1.53	11.31
Parow (Part 2)	49.05	10.47	16.12	11.52	21.79	1.04	0.52	1.55	1.03	0.00	0.83	11.31
World View	27.59	0.00	43.85	18.75	22.55	0.00	0.00	0.00	0.00	0.00	0.00	11.27
Boulders	39.29	0.00	17.65	0.00	14.24	0.00	0.00	5.88	35.29	0.00	8.23	11.23
Beaconvale	54.08	8.32	14.15	10.08	21.66	0.19	0.37	1.12	2.06	0.19	0.79	11.22
Fairie Knowe	31.46	10.94	19.81	8.93	17.79	0.00	2.29	4.58	13.75	2.29	4.58	11.18
Parrowvallei	51.55	10.30	14.60	8.22	21.17	0.00	0.00	2.44	3.35	0.00	1.16	11.16
Belhar 17	43.20	11.46	16.18	10.94	20.45	0.00	1.18	1.18	6.47	0.00	1.77	11.11
Lansdowne	47.46	9.96	15.34	7.97	20.18	0.73	1.08	1.55	6.19	0.64	2.04	11.11
Wynberg Central	44.11	9.65	21.70	6.80	20.57	0.57	0.68	1.70	2.74	0.07	1.15	10.86
Parow (Part 1)	50.04	8.31	15.64	8.86	20.71	0.40	1.19	0.00	1.99	0.80	0.88	10.79
Whispering Pines	36.59	11.76	16.43	2.50	16.82	0.00	0.00	4.42	8.85	10.32	4.72	10.77
Crawford	43.64	6.68	18.83	9.84	19.75	0.22	1.08	1.95	5.36	0.22	1.77	10.76
Northpine	51.36	9.48	7.40	9.24	19.37	1.31	0.39	2.37	6.49	0.00	2.11	10.74
Helderzicht	52.16	9.40	10.40	9.29	20.31	0.00	0.00	1.51	3.87	0.00	1.08	10.69
Winston Estate	49.62	6.76	13.32	10.41	20.03	0.00	0.00	0.00	5.65	0.00	1.13	10.58
Peerless Park East	47.94	9.55	15.39	6.59	19.87	0.00	0.36	0.72	4.29	0.00	1.07	10.47
Southfork	44.49	17.56	9.75	6.07	19.47	1.41	0.00	1.41	4.23	0.00	1.41	10.44
Bayview Village	25.10	12.07	10.16	12.19	14.88	2.25	2.25	6.75	4.50	13.51	5.85	10.37
Belhar 6	44.89	16.13	13.50	4.94	19.87	0.58	0.00	2.28	1.14	0.00	0.80	10.33
Zeekoeivlei	43.03	8.39	10.39	6.09	16.98	0.67	0.33	2.64	13.59	0.33	3.51	10.24
Heathfield	48.11	8.59	15.21	6.29	19.55	0.17	0.34	1.18	2.19	0.17	0.81	10.18
Richmond	47.45	5.88	11.66	11.66	19.16	0.00	0.00	5.93	0.00	0.00	1.19	10.17

Spatial Variations in Levels of Living

SUBURB	% Adults (20+) with highest qualification < Matric	% of economically active unemployed	% Households earning < R19300 pa	% of labour force in unskilled occupations	S.E.S. Index	% Households living in Informal Dwellings	% Households with no access to electricity for lighting	% Households with no flush or chemical toilet	% Households with no potable water on-site or in-dwelling	% Households with no refuse removal by local authority weekly or less	Service Index	Levels of Living Index
Penhill	33.62	4.85	18.69	8.03	16.30	1.57	1.55	1.55	12.39	3.10	4.03	10.16
Glenlily	47.17	7.57	17.18	6.58	19.63	0.43	0.14	0.14	0.99	0.28	0.40	10.01
Diep River	34.21	5.39	32.98	5.89	19.62	0.00	0.00	0.94	0.94	0.00	0.38	10.00
Wetton	46.45	6.99	8.76	8.94	17.79	0.55	0.00	0.55	9.08	0.55	2.15	9.97
Andas Estate	36.28	7.08	17.80	10.64	17.95	0.50	0.46	0.00	7.43	0.93	1.86	9.91
Eversdal Heights	30.03	1.61	19.03	28.27	19.74	0.00	0.00	0.00	0.00	0.00	0.00	9.87
Mandalay	36.02	17.24	8.40	8.67	17.58	0.74	0.00	1.11	8.02	0.55	2.08	9.83
Park Estates	38.69	0.00	27.83	11.76	19.57	0.00	0.00	0.00	0.00	0.00	0.00	9.79
Kemperville	40.47	9.86	18.86	4.17	18.34	1.30	0.00	0.58	2.92	0.00	0.96	9.65
Serepta	44.22	7.86	11.54	8.33	17.99	0.00	1.01	0.00	5.19	0.00	1.24	9.61
Oakdene	39.79	10.05	10.89	10.85	17.90	0.00	3.11	0.78	2.33	0.00	1.24	9.57
Bantry Bay	19.98	3.72	23.05	23.73	17.62	0.00	1.50	0.75	4.49	0.75	1.50	9.56
Strand Central	27.93	8.97	23.97	8.17	17.26	0.69	0.39	3.34	4.39	0.44	1.85	9.56
Melkbosstrand	26.48	7.48	17.96	10.88	15.70	1.57	3.54	3.54	5.53	2.65	3.37	9.53
Brandwood	47.32	8.63	9.41	6.68	18.01	0.00	1.34	0.00	2.69	0.00	0.81	9.41
Vasco Estate	47.15	7.65	13.35	4.30	18.11	0.15	0.15	0.61	2.17	0.31	0.68	9.40
Elfindale	38.38	7.10	17.53	8.39	17.85	1.07	0.00	0.71	2.52	0.35	0.93	9.39
Montana	42.95	18.73	7.36	3.04	18.02	1.89	0.00	1.89	0.00	0.00	0.76	9.39
Sea Point	24.70	5.66	25.44	12.29	17.02	0.37	1.05	1.16	3.75	0.75	1.42	9.22
Ottery	40.32	7.79	9.28	7.11	16.13	1.08	2.73	1.75	5.23	0.62	2.28	9.20
Fairfield Estate	42.56	8.34	14.42	6.15	17.87	0.31	0.00	0.61	1.53	0.00	0.49	9.18
Goodwood Estate	46.98	7.17	9.75	6.77	17.67	0.25	0.00	0.72	2.40	0.00	0.67	9.17
Peerless Park North	45.76	8.24	8.34	4.83	16.79	2.92	1.90	0.99	1.49	0.00	1.46	9.13
Windsor Estate	42.59	11.76	5.93	6.40	16.67	0.82	0.00	0.82	5.72	0.00	1.47	9.07
Cape Town Central	20.45	51.61	0.00	0.00	18.02	0.00	0.00	0.00	0.00	0.00	0.00	9.01
Highbury	31.18	6.55	22.51	5.55	16.45	1.48	1.23	1.15	2.15	1.23	1.45	8.95
Kalamuda	12.84	9.78	34.88	11.73	17.31	0.95	0.00	1.91	0.00	0.00	0.57	8.94
Berg-En-Dal	24.89	6.25	24.07	6.78	15.50	0.00	0.00	2.36	9.43	0.00	2.36	8.93
Three Anchor Bay	28.27	5.39	20.62	10.87	16.29	0.61	1.13	2.25	3.66	0.00	1.53	8.91
Erica	36.69	9.27	14.51	6.58	16.76	0.40	0.00	1.17	3.50	0.00	1.01	8.89
Townsend Estate	42.21	8.33	11.37	5.83	16.94	0.43	0.45	0.67	2.20	0.22	0.79	8.86
Kalkbay	34.90	8.64	12.02	7.63	15.80	0.00	0.00	0.85	8.35	0.00	1.84	8.82
Observatory	22.86	7.03	25.35	3.66	14.73	0.81	1.87	1.55	7.57	2.80	2.92	8.82

Spatial Variations in Levels of Living

SUBURB	% Adults (20+) with highest qualification < Matric	% of economically active unemployed	% Households earning < R19300 pa	% of labour force in unskilled occupations	S.E.S. Index	% Households living in Informal Dwellings	% Households with no access to electricity for lighting	% Households with no flush or chemical toilet	% Households with no potable water on-site or in-dwelling	% Households with no refuse removal by local authority weekly or less	Service Index	Levels of Living Index
Southfield	41.79	6.33	11.01	5.42	16.14	0.61	1.01	1.01	4.05	0.60	1.46	8.80
Richmond Estate	44.95	7.65	7.45	5.77	16.46	0.26	0.26	2.05	2.05	0.51	1.03	8.74
Kingston	40.42	6.41	14.70	8.20	17.43	0.00	0.00	0.00	0.00	0.00	0.00	8.72
Sybrand Park	32.45	2.22	15.48	2.77	13.23	0.00	1.16	0.00	19.88	0.00	4.21	8.72
Royal Cape	44.72	4.88	17.20	1.38	17.05	0.00	0.00	0.00	1.71	0.00	0.34	8.69
Signal Hill/Lions Head	21.97	2.29	24.68	13.27	15.55	0.00	0.00	4.31	4.31	0.00	1.72	8.64
Sun Valley	30.64	6.06	11.03	4.16	12.97	0.91	2.67	1.34	15.71	0.89	4.30	8.64
Durrheim	35.82	13.59	9.80	6.35	16.39	0.91	0.00	0.00	2.74	0.00	0.73	8.56
Bothasig	41.80	5.80	12.26	5.13	16.25	0.31	0.70	0.85	2.15	0.23	0.85	8.55
Groenvallei	30.14	6.96	19.83	4.96	15.47	0.49	0.00	0.97	4.38	1.95	1.56	8.52
Strandvale	21.86	6.02	29.84	4.00	15.43	0.00	0.00	0.99	4.94	1.98	1.58	8.51
Bonnie Brook	40.34	4.20	8.89	3.68	14.28	0.63	0.63	0.31	11.12	0.31	2.60	8.44
Labiance	34.03	5.39	17.55	6.27	15.81	1.23	1.07	1.07	1.07	0.53	0.99	8.40
Rondebosch East	35.79	5.25	13.97	9.80	16.20	0.79	0.00	1.31	0.79	0.00	0.58	8.39
Shirley Park	40.91	4.75	13.58	6.57	16.45	0.00	0.00	0.00	1.04	0.00	0.21	8.33
De Kuilen	32.27	6.32	15.27	8.87	15.68	0.00	0.80	0.40	3.58	0.00	0.96	8.32
Thornton	37.38	7.84	13.62	3.62	15.62	0.42	0.41	1.23	2.66	0.41	1.03	8.32
Bishopscourt	18.01	1.80	24.00	16.43	15.06	0.00	3.08	2.57	1.03	1.03	1.54	8.30
Oosterzee	37.24	4.37	16.01	5.36	15.75	0.00	0.00	0.00	3.49	0.00	0.70	8.22
Lionvham	28.22	6.17	18.32	8.36	15.27	0.00	1.09	1.09	3.26	0.00	1.09	8.18
Green Point	23.75	10.68	16.98	6.58	14.50	0.21	1.80	1.20	4.61	1.40	1.84	8.17
Windsor Park	42.40	6.70	8.45	4.78	15.58	0.21	0.21	0.62	1.69	0.42	0.63	8.11
Milnerton	22.82	7.38	13.84	9.22	13.32	1.45	1.80	2.98	3.69	4.03	2.79	8.05
Fresnaye	21.33	2.44	14.29	16.38	13.61	1.25	1.21	2.07	6.58	1.21	2.46	8.04
St Michaels	45.64	2.41	3.87	7.62	14.89	0.00	0.00	1.95	3.91	0.00	1.17	8.03
Flat Acres	26.24	2.08	11.86	12.00	13.05	0.00	0.00	5.95	8.92	0.00	2.97	8.01
Protea Village	29.69	11.82	7.88	6.47	13.97	0.00	0.00	2.64	3.97	3.31	1.98	7.97
Guldenland	24.37	9.68	21.54	7.99	15.90	0.00	0.00	0.00	0.00	0.00	0.00	7.95
Bo-Oakdale	35.03	5.18	10.77	5.09	14.02	0.00	0.16	0.65	8.32	0.16	1.86	7.94
Fairways	38.45	6.11	8.77	5.89	14.81	0.32	0.96	0.64	2.94	0.32	1.04	7.92
Strand Halt	34.74	6.04	12.33	6.63	14.94	0.00	0.41	0.41	3.70	0.00	0.90	7.92
Wittenboomen	20.75	0.00	16.54	25.93	15.81	0.00	0.00	0.00	0.00	0.00	0.00	7.90
Milnerton Central	27.64	2.41	14.84	6.38	12.82	0.00	0.00	2.27	11.34	1.13	2.95	7.88

Spatial Variations in Levels of Living

SUBURB	% Adults (20+) with highest qualification < Matric	% of economically active unemployed	% Households earning < R19300 pa	% of labour force in unskilled occupations	S.E.S. Index	% Households living in Informal Dwellings	% Households with no access to electricity for lighting	% Households with no flush or chemical toilet	% Households with no potable water on-site or in-dwelling	% Households with no refuse removal by local authority weekly or less	Service Index	Levels of Living Index
Avondale (Parow)	35.42	5.71	13.26	4.15	14.64	0.93	0.00	0.62	3.08	0.62	1.05	7.84
The Palms	19.40	7.74	13.42	12.41	13.24	0.00	0.00	0.00	11.88	0.00	2.38	7.81
Noordhaven	17.10	3.92	21.83	10.00	13.21	0.00	5.45	2.72	0.00	2.72	2.18	7.70
Goodwood Park Ext 1	37.82	6.93	9.99	3.30	14.51	0.00	0.00	0.00	4.33	0.00	0.87	7.69
Seaforth	27.82	2.63	8.33	12.42	12.80	0.00	2.54	2.54	7.62	0.00	2.54	7.67
Van Ryneveld	24.15	7.24	21.83	5.73	14.74	0.45	1.20	1.20	0.00	0.00	0.57	7.65
Chrismar	33.48	4.19	14.63	5.94	14.56	0.53	0.00	1.59	0.61	0.53	0.65	7.61
Rustdal	34.52	6.89	11.40	4.83	14.41	0.00	0.81	0.81	1.62	0.81	0.81	7.61
Vredenberg	29.20	7.69	3.72	4.33	11.24	5.62	3.68	3.68	6.50	0.00	3.90	7.57
Glencairn	25.20	5.08	21.48	2.04	13.45	3.30	0.00	3.25	1.62	0.00	1.63	7.54
Glenhaven	29.95	6.26	12.22	6.02	13.61	1.31	0.00	1.97	3.94	0.00	1.44	7.53
Clifton	21.31	4.76	12.40	17.26	13.93	1.77	0.00	1.74	1.74	0.00	1.05	7.49
Durbanville Ext 17	20.19	3.70	20.66	5.25	12.45	0.00	0.00	0.00	12.40	0.00	2.48	7.47
Eversdal Ext 1 (Bellville)	21.55	1.03	17.84	16.06	14.12	0.00	0.00	1.33	2.65	0.00	0.80	7.46
Blomtuin	28.90	3.78	16.21	9.50	14.60	0.00	0.00	0.00	0.00	1.53	0.31	7.45
Plumstead	32.93	6.32	12.58	3.99	13.96	0.56	0.29	0.79	2.82	0.29	0.95	7.45
Mouille Point	21.68	2.82	19.06	10.75	13.58	0.48	1.41	0.47	3.29	0.47	1.22	7.40
N1 City	38.49	2.99	6.21	3.44	12.78	0.00	3.25	6.50	0.00	0.00	1.95	7.37
Helgarda Estate	20.47	6.41	12.17	18.42	14.37	1.71	0.00	0.00	0.00	0.00	0.34	7.35
Tijgerhof	32.40	7.14	11.78	5.10	14.11	0.78	0.26	0.52	1.30	0.00	0.57	7.34
Chapmanspeak	13.51	4.88	20.92	14.46	13.44	0.00	1.20	1.20	3.59	0.00	1.20	7.32
Mowbray	12.43	6.42	29.81	5.10	13.44	0.28	1.40	2.11	1.40	0.47	1.13	7.29
Beroma	28.59	4.63	13.82	5.04	13.02	0.00	0.00	0.00	7.73	0.00	1.55	7.28
Eversdal Ext 1 (Durbanville)	22.09	3.19	14.80	15.60	13.92	0.00	0.00	0.00	3.00	0.00	0.60	7.26
Gardens	16.11	6.20	21.86	6.19	12.59	0.56	1.29	1.61	5.15	1.07	1.94	7.26
Hoheizen Ext 20	30.33	1.66	11.01	9.99	13.25	0.00	0.00	1.46	3.64	0.73	1.17	7.21
Richwood	32.17	6.25	8.02	7.14	13.40	0.31	1.53	1.53	1.29	0.31	0.99	7.19
Summer Greens	34.48	7.79	6.39	6.15	13.70	0.00	0.23	0.68	1.81	0.68	0.68	7.19
Bellville Ext 34	26.07	2.35	20.49	8.43	14.34	0.00	0.00	0.00	0.00	0.00	0.00	7.17
Bridgewater Ext 1 (Somerset West)	23.67	9.51	15.01	4.76	13.24	0.71	0.22	1.74	1.95	0.65	1.05	7.15
Chrismar Ext 1	26.29	7.14	12.56	3.07	12.27	0.00	0.00	0.00	10.21	0.00	2.04	7.15
Lochnerhof	26.33	5.62	15.76	4.63	13.09	0.00	0.00	1.41	4.24	0.47	1.22	7.15
Golden Acre	24.83	3.06	13.27	13.08	13.56	0.00	0.82	0.00	2.56	0.00	0.68	7.12

Spatial Variations in Levels of Living

SUBURB	% Adults (20+) with highest qualification < Matric	% of economically active unemployed	% Households earning < R19300 pa	% of labour force in unskilled occupations	S.E.S. Index	% Households living in Informal Dwellings	% Households with no access to electricity for lighting	% Households with no flush or chemical toilet	% Households with no potable water on-site or in-dwelling	% Households with no refuse removal by local authority weekly or less	Service Index	Levels of Living Index
Vierlanden	20.16	0.78	24.60	9.85	13.85	0.00	0.00	0.00	1.94	0.00	0.39	7.12
Vierlanden Ext D44	11.59	4.23	22.72	5.61	11.04	0.00	4.98	3.98	3.98	2.99	3.19	7.11
Tygerdal	35.19	4.77	7.06	4.33	12.84	0.38	0.77	2.01	2.69	0.77	1.32	7.08
Kraaifontein (Non Urban)	24.07	4.84	11.95	8.41	12.32	0.00	4.54	0.00	0.00	4.54	1.82	7.07
Mabille Park	31.95	5.46	10.60	5.56	13.39	0.00	0.41	0.41	2.46	0.41	0.74	7.07
Meadowridge	20.03	5.63	16.04	6.92	12.16	1.07	1.35	2.53	4.41	0.00	1.87	7.01
Welgemoed	15.07	1.88	19.76	16.29	13.25	0.96	0.48	0.48	1.57	0.24	0.75	7.00
Arauna	33.80	4.80	6.64	9.01	13.56	0.00	0.00	1.04	1.04	0.00	0.42	6.99
Goodwood Park Ext	40.34	4.95	2.95	6.23	13.62	1.47	0.00	0.00	0.00	0.00	0.29	6.96
Acacia Park	22.27	13.02	5.48	10.58	12.84	0.00	0.89	1.77	2.66	0.00	1.06	6.95
Belgravia (Bellville)	28.40	5.43	14.93	3.42	13.05	0.00	0.00	0.00	4.25	0.00	0.85	6.95
Killarney	26.50	5.45	9.66	6.16	11.94	0.65	0.00	0.00	3.86	5.15	1.93	6.94
Die Bos	23.12	4.88	12.56	5.57	11.53	3.88	0.00	0.95	5.31	0.95	2.22	6.88
Dreyersdal	23.50	4.94	19.86	3.51	12.95	0.36	0.00	0.35	3.19	0.00	0.78	6.87
Durbanville Ext 2	20.14	3.76	16.60	11.45	12.99	0.94	0.93	0.93	0.93	0.00	0.75	6.87
Signal Hill	17.02	3.45	16.41	14.58	12.87	0.00	0.00	2.21	2.21	0.00	0.88	6.87
Marina Da Gama	27.74	6.53	10.83	5.01	12.53	0.22	0.22	1.32	3.74	0.44	1.19	6.86
Anchorage Park	30.47	3.90	11.90	4.00	12.57	0.00	2.34	0.00	3.12	0.00	1.09	6.83
Durbanville (Small Holdings)	11.27	9.30	12.62	5.88	9.77	3.89	0.00	0.00	15.57	0.00	3.89	6.83
Greenways	23.99	5.56	12.53	7.41	12.37	1.60	0.00	0.00	3.15	1.58	1.27	6.82
Amandaglen	14.77	6.16	15.31	6.54	10.70	0.00	0.00	5.97	8.33	0.00	2.86	6.78
Sunkist	31.89	5.31	12.89	3.93	13.51	0.00	0.00	0.00	0.00	0.00	0.00	6.75
Winford	7.69	0.00	33.33	8.33	12.34	0.00	0.00	5.82	0.00	0.00	1.16	6.75
Fish Hoek	23.19	6.06	16.61	4.44	12.58	0.53	0.20	0.98	2.05	0.69	0.89	6.73
Stikland Hospital	53.82	0.00	0.00	0.00	13.46	0.00	0.00	0.00	0.00	0.00	0.00	6.73
Gordons Bay Central	21.93	7.04	14.57	5.50	12.26	0.28	0.81	1.08	2.98	0.27	1.08	6.67
Clamhall	36.59	5.56	7.43	2.48	13.02	0.00	0.00	0.00	1.48	0.00	0.30	6.66
Bloubergrant	14.82	9.26	17.32	4.65	11.51	0.00	0.00	2.22	4.44	2.22	1.78	6.64
Kenridge	17.26	1.50	22.34	9.73	12.71	0.00	0.00	0.94	1.88	0.00	0.56	6.64
Parel Valley	15.20	3.63	13.83	11.83	11.12	0.78	1.17	1.94	5.59	1.17	2.13	6.63
Mikro Park	19.28	2.31	7.65	8.21	9.36	1.95	4.82	2.89	4.82	4.82	3.86	6.61
Pine Acres	19.91	1.96	14.90	5.90	10.67	0.00	0.00	0.00	12.74	0.00	2.55	6.61
Camps Bay	18.04	3.17	13.13	12.67	11.75	0.20	1.36	1.85	3.33	0.39	1.43	6.59

Spatial Variations in Levels of Living

SUBURB	% Adults (20+) with highest qualification < Matric	% of economically active unemployed	% Households earning < R19300 pa	% of labour force in unskilled occupations	S.E.S. Index	% Households living in Informal Dwellings	% Households with no access to electricity for lighting	% Households with no flush or chemical toilet	% Households with no potable water on-site or in-dwelling	% Households with no refuse removal by local authority weekly or less	Service Index	Levels of Living Index
Llandudno	13.20	4.00	12.74	16.67	11.65	4.56	0.00	0.00	3.00	0.00	1.51	6.58
Jagershof	27.98	5.64	8.42	5.96	12.00	0.00	0.93	2.79	0.93	0.93	1.12	6.56
Welcome Glen	26.94	4.69	13.64	4.21	12.37	1.16	0.00	1.16	1.16	0.00	0.70	6.53
Scott Estate	16.82	9.63	11.86	7.54	11.46	0.00	1.96	0.98	3.91	0.98	1.57	6.51
Bosman Estate	22.82	4.89	14.35	6.82	12.22	0.00	0.00	1.12	1.69	1.12	0.79	6.50
Goedgemoed Ext D40	13.08	6.41	17.29	5.63	10.60	0.00	0.00	0.00	11.92	0.00	2.38	6.49
Westridge (Somerset West)	21.17	6.21	9.81	6.88	11.02	1.64	3.18	0.00	3.97	0.79	1.92	6.47
Edenpark	24.72	6.19	14.48	5.08	12.62	0.00	0.00	0.00	0.00	1.42	0.28	6.45
The Lakes	24.34	6.06	12.78	3.31	11.62	0.00	0.00	0.00	6.43	0.00	1.29	6.45
Uitsig (Durbanville)	18.78	3.76	6.79	8.92	9.56	1.89	1.24	1.86	6.31	5.04	3.27	6.42
Duynfontein	23.10	4.91	9.98	8.28	11.57	0.80	0.78	0.78	0.78	3.14	1.26	6.41
Sanlamhof	24.00	4.93	17.67	2.06	12.17	0.00	0.00	1.87	0.93	0.00	0.56	6.36
St Dumas	28.62	6.28	3.36	4.27	10.63	0.98	0.49	0.49	6.39	1.95	2.06	6.35
Vredelust	19.49	0.62	17.26	8.50	11.47	0.86	0.00	2.55	1.70	0.85	1.19	6.33
Roma Glen	10.83	9.09	13.32	8.30	10.39	0.00	0.00	2.18	9.00	0.00	2.24	6.31
Thalmien	25.22	4.03	11.38	6.51	11.79	0.45	0.45	1.79	0.89	0.45	0.81	6.30
Jacques Hill Estate	17.89	6.03	11.29	9.90	11.28	0.00	0.65	1.31	4.57	0.00	1.31	6.29
Silver Oaks	31.70	0.00	9.23	6.96	11.97	0.00	0.00	0.00	2.99	0.00	0.60	6.29
Morgenster	28.87	5.76	6.09	6.61	11.83	0.00	0.00	0.44	3.16	0.00	0.72	6.28
Amandelrug	24.63	5.01	8.33	8.28	11.56	0.00	0.42	0.00	3.43	0.84	0.94	6.25
Monte Vista	23.63	4.45	13.20	5.21	11.62	0.20	0.39	0.58	2.98	0.19	0.87	6.25
Vredehoek	18.03	5.01	13.79	5.37	10.55	1.07	0.52	1.42	6.31	0.39	1.94	6.25
Bellville South (Durbanville)	14.68	2.08	5.43	16.77	9.74	0.00	1.35	5.39	6.74	0.00	2.70	6.22
Constantia	16.43	1.91	9.48	14.21	10.51	0.31	1.60	1.20	5.61	0.90	1.92	6.22
Boston	20.94	3.21	14.79	5.13	11.02	0.25	1.59	1.27	3.44	0.23	1.36	6.19
Silverglade	23.38	5.84	10.49	5.23	11.24	0.52	1.04	0.52	2.60	1.04	1.14	6.19
Protea Hoogte	25.21	5.19	8.05	5.90	11.09	0.84	0.82	0.96	3.06	0.41	1.22	6.15
Rondebosch	15.10	2.52	20.19	6.36	11.04	0.51	0.72	0.91	3.12	0.62	1.18	6.11
Glenwood	24.87	4.73	11.83	2.40	10.96	0.00	0.61	0.61	4.30	0.61	1.23	6.09
Bloubergstrand	17.56	2.42	13.07	10.72	10.94	0.49	0.97	0.97	2.42	0.97	1.16	6.05
Eversdal Ext 8	25.07	6.16	5.03	6.87	10.78	0.00	0.00	3.27	3.27	0.00	1.31	6.05
Helena Heights	13.86	5.88	12.65	11.08	10.87	0.00	0.00	1.03	4.12	1.03	1.24	6.05
Eversdal	15.77	4.13	15.10	12.66	11.92	0.00	0.00	0.00	0.62	0.00	0.12	6.02

Spatial Variations in Levels of Living

SUBURB	% Adults (20+) with highest qualification < Matric	% of economically active unemployed	% Households earning < R19300 pa	% of labour force in unskilled occupations	S.E.S. Index	% Households living in Informal Dwellings	% Households with no access to electricity for lighting	% Households with no flush or chemical toilet	% Households with no potable water on-site or in-dwelling	% Households with no refuse removal by local authority weekly or less	Service Index	Levels of Living Index
Eversdal Ext 14	11.86	3.37	8.25	20.74	11.06	0.00	0.00	3.23	1.61	0.00	0.97	6.01
Heemstede	32.81	0.00	7.79	5.41	11.50	0.00	0.00	0.00	2.63	0.00	0.53	6.01
Durbanville (Urban)	19.13	3.75	13.93	7.06	10.97	0.43	0.42	1.27	1.96	0.25	0.87	5.92
Klipdam	26.72	2.68	9.87	5.49	11.19	1.10	0.00	1.64	0.55	0.00	0.66	5.92
Rosebank	9.38	4.64	22.65	5.12	10.45	0.00	3.09	0.69	1.72	1.37	1.37	5.91
Penzance Estate	14.55	4.17	11.36	9.89	9.99	1.15	0.00	0.00	7.84	0.00	1.80	5.90
Clovelly	10.55	0.00	4.54	3.07	4.54	0.00	0.00	1.53	34.68	0.00	7.24	5.89
Panorama	23.50	1.75	7.60	9.91	10.69	0.39	0.39	1.94	2.72	0.00	1.09	5.89
Roundhay	15.59	5.29	18.43	5.55	11.22	0.00	0.00	0.77	1.05	1.05	0.57	5.89
Plattekloof 3	20.48	2.99	9.79	13.69	11.74	0.00	0.00	0.00	0.00	0.00	0.00	5.87
Bayview	15.74	9.52	21.58	0.00	11.71	0.00	0.00	0.00	0.00	0.00	0.00	5.86
Ferndale	26.21	7.17	7.03	3.07	10.87	0.00	0.65	1.30	1.30	0.97	0.84	5.86
Sunridge	22.43	4.60	12.55	1.27	10.21	0.00	0.00	0.90	6.63	0.00	1.51	5.86
Eversdal Ext 4	20.45	3.19	12.76	7.69	11.02	0.00	0.00	0.00	0.00	3.12	0.62	5.82
Eldawn	13.52	4.38	11.16	6.20	8.82	1.47	0.00	2.19	3.65	6.70	2.80	5.81
Belair	21.73	2.93	7.51	7.39	9.89	0.00	1.07	1.07	5.36	1.07	1.71	5.80
Oranjezicht (Part 2)	15.30	2.67	15.54	5.52	9.76	1.84	0.23	0.68	2.54	3.74	1.81	5.78
Eversdal Ext 3	10.69	6.55	15.51	10.82	10.89	0.00	0.00	1.09	2.18	0.00	0.65	5.77
Welgelegen 2	23.79	3.12	6.40	7.74	10.26	0.00	0.57	2.30	3.52	0.00	1.28	5.77
Peers Hill	24.02	6.19	6.11	7.61	10.98	0.52	0.00	0.52	1.04	0.00	0.42	5.70
Golden Hill	12.34	4.85	13.08	8.97	9.81	2.67	0.00	2.60	2.60	0.00	1.57	5.69
Durbanville Hills	16.68	2.17	8.55	11.70	9.78	1.09	0.00	1.06	4.85	0.53	1.51	5.64
Amandaglen Ext E15	13.31	3.54	14.33	8.20	9.85	1.02	0.99	0.99	2.97	0.99	1.39	5.62
Vygeboom	10.70	1.94	11.04	16.61	10.07	1.43	0.00	2.82	0.00	1.41	1.13	5.60
Springfield	30.15	0.00	7.18	5.45	10.70	0.00	0.00	0.00	0.00	2.21	0.44	5.57
Van Riebeeckstrand	17.20	7.25	9.91	6.73	10.27	0.00	0.00	0.70	3.61	0.00	0.86	5.57
Vergesicht	21.42	8.77	4.07	3.77	9.51	2.01	0.00	2.01	4.02	0.00	1.61	5.56
Kenilworth	17.05	4.33	13.32	5.87	10.14	0.37	0.37	1.05	2.91	0.06	0.95	5.55
Mount Pleasant	28.02	6.67	5.88	3.73	11.08	0.00	0.00	0.00	0.00	0.00	0.00	5.54
Amandelsig	22.24	1.10	12.65	8.21	11.05	0.00	0.00	0.00	0.00	0.00	0.00	5.53
Kommetjie	19.85	5.78	11.09	3.59	10.08	0.98	0.65	0.98	2.28	0.00	0.98	5.53
King Edward Rest	17.42	9.17	9.40	6.22	10.55	0.00	0.00	0.00	2.40	0.00	0.48	5.52
Door de Kraal	11.98	3.57	12.78	6.73	8.77	0.00	0.00	0.00	11.15	0.00	2.23	5.50

Spatial Variations in Levels of Living

SUBURB	% Adults (20+) with highest qualification < Matric	% of economically active unemployed	% Households earning < R19300 pa	% of labour force in unskilled occupations	S.E.S. Index	% Households living in Informal Dwellings	% Households with no access to electricity for lighting	% Households with no flush or chemical toilet	% Households with no potable water on-site or in-dwelling	% Households with no refuse removal by local authority weekly or less	Service Index	Levels of Living Index
Briza	18.26	3.52	8.28	6.99	9.26	1.14	1.11	1.11	4.45	0.74	1.71	5.49
Sunnydale	22.77	4.72	9.23	4.15	10.22	0.00	0.00	0.00	3.71	0.00	0.74	5.48
Bergvliet	16.51	4.11	9.46	5.20	8.82	0.47	0.23	1.17	8.74	0.00	2.12	5.47
Brackenfell Heights	24.88	3.65	8.69	4.89	10.53	0.00	0.00	0.00	1.63	0.41	0.41	5.47
Harbour Heights	33.33	5.00	5.21	0.00	10.89	0.00	0.00	0.00	0.00	0.00	0.00	5.44
Kenridge Heights Ext	16.41	1.82	11.89	10.03	10.04	1.68	0.83	0.83	0.83	0.00	0.83	5.44
Frogmore Estate	26.15	5.52	8.14	0.77	10.15	0.00	2.35	1.18	0.00	0.00	0.71	5.43
Loevenstein	15.04	3.01	11.56	9.01	9.66	0.57	0.19	0.76	2.34	2.09	1.19	5.42
Nutwood	14.52	5.49	12.82	6.85	9.92	0.00	0.00	2.25	2.25	0.00	0.90	5.41
Mountainside Estates	15.70	3.81	11.28	1.45	8.06	0.00	0.00	0.00	3.38	10.15	2.71	5.38
Schusterskraal	17.17	0.00	17.04	4.86	9.77	0.00	2.97	0.99	0.99	0.00	0.99	5.38
Welgelegen 1	17.79	5.93	4.84	5.72	8.57	0.68	0.00	0.68	9.32	0.00	2.14	5.35
Table View	18.87	4.89	9.53	4.69	9.50	0.64	0.71	1.52	2.75	0.24	1.17	5.33
Welgedacht	10.84	1.33	17.38	11.27	10.21	1.15	0.00	0.58	0.00	0.58	0.46	5.33
Edgemead	21.97	3.22	7.54	3.16	8.97	0.17	0.17	1.33	6.47	0.09	1.65	5.31
Kirstenhof	19.74	3.36	5.30	2.78	7.80	0.58	0.57	1.72	10.58	0.57	2.80	5.30
Sonstraal Ext E16	15.91	3.70	9.07	8.42	9.28	1.47	0.00	2.19	2.92	0.00	1.32	5.30
Claremont	16.03	3.04	12.75	5.70	9.38	0.34	1.13	0.63	3.17	0.72	1.20	5.29
Oakdale	16.70	5.42	7.10	4.64	8.47	1.76	0.00	1.73	3.47	3.47	2.09	5.28
Bel Ombre	18.18	0.00	0.00	18.18	9.09	0.00	0.00	0.00	7.22	0.00	1.44	5.27
Chantecler	16.95	2.70	6.06	13.67	9.85	0.00	0.00	1.50	1.69	0.00	0.64	5.24
Newlands	11.73	2.98	13.96	8.07	9.19	0.31	1.52	1.22	2.11	1.06	1.24	5.21
Glencairn Heights	22.80	4.17	10.15	0.86	9.50	0.00	0.73	1.45	0.73	1.45	0.87	5.18
Parow North	21.98	3.39	7.99	5.60	9.74	0.39	0.19	0.57	1.72	0.19	0.61	5.18
Welgelegen 3	21.34	4.11	5.25	5.49	9.05	0.52	1.54	2.06	2.13	0.00	1.25	5.15
Aurora Ext D22	8.54	2.08	16.11	9.37	9.03	0.00	0.97	1.95	0.97	1.95	1.17	5.10
Aurora Ext D33	12.82	3.39	13.19	9.39	9.70	0.00	0.00	1.28	1.28	0.00	0.51	5.10
St James	17.82	2.06	9.49	7.58	9.24	0.00	0.00	0.96	3.85	0.00	0.96	5.10
La Rochelle Ext 16	21.29	2.91	7.68	4.08	8.99	0.00	1.25	1.88	1.96	0.63	1.14	5.07
Woodbridge Island	16.96	4.88	15.63	1.31	9.70	1.12	0.00	1.12	0.00	0.00	0.45	5.07
Soneike	22.82	5.42	6.31	3.19	9.44	0.00	0.64	0.64	1.27	0.64	0.64	5.04
Dassenberg	21.01	5.26	5.49	0.00	7.94	0.00	2.62	0.00	7.85	0.00	2.09	5.02
Wellway Park	15.15	3.47	14.51	5.95	9.77	0.00	0.00	0.00	1.13	0.00	0.23	5.00

Spatial Variations in Levels of Living

SUBURB	% Adults (20+) with highest qualification < Matric	% of economically active unemployed	% Households earning < R19300 pa	% of labour force in unskilled occupations	S.E.S. Index	% Households living in Informal Dwellings	% Households with no access to electricity for lighting	% Households with no flush or chemical toilet	% Households with no potable water on-site or in-dwelling	% Households with no refuse removal by local authority weekly or less	Service Index	Levels of Living Index
Glenmarine	15.38	8.11	10.71	5.71	9.98	0.00	0.00	0.00	0.00	0.00	0.00	4.99
Hoogstede	24.42	0.00	4.00	5.09	8.38	0.00	0.00	3.94	3.94	0.00	1.58	4.98
Welgelee	19.72	5.76	6.70	2.99	8.79	0.59	1.16	1.16	1.75	1.16	1.16	4.98
Durbanville Ext 13	13.51	4.94	9.63	7.89	8.99	0.00	0.00	3.16	1.58	0.00	0.95	4.97
Noordhoek Manor	19.79	0.00	16.60	0.00	9.10	0.00	0.00	0.00	2.10	2.10	0.84	4.97
Ridgeworth	14.71	2.85	9.96	5.62	8.29	1.08	1.07	1.07	4.27	0.53	1.60	4.94
Oakglen	20.55	1.89	8.03	3.64	8.53	0.31	0.92	1.84	3.07	0.31	1.29	4.91
Hout Bay	12.11	1.84	11.34	6.57	7.97	0.52	1.36	1.53	5.02	0.51	1.79	4.88
Pinelands	16.78	3.60	9.27	4.13	8.45	0.74	1.01	1.26	2.61	0.84	1.29	4.87
Milnerton Ridge	17.25	4.32	10.60	3.80	8.99	0.00	0.00	1.07	2.33	0.00	0.68	4.84
Platteklouf 2	17.14	1.59	7.30	9.41	8.86	0.00	0.58	0.58	2.88	0.00	0.81	4.83
Steenbras View	12.75	3.75	8.22	9.69	8.60	1.76	0.00	1.73	1.73	0.00	1.04	4.82
De Tijger	15.37	3.91	7.77	4.67	7.93	0.75	0.74	1.48	4.54	0.74	1.65	4.79
Capri Village	14.77	3.96	11.04	4.48	8.56	1.44	1.41	0.70	0.70	0.70	0.99	4.78
Brackenfell North	17.32	4.75	9.12	3.15	8.59	0.00	0.00	0.00	4.80	0.00	0.96	4.77
Bloemhof	14.86	4.17	9.14	6.25	8.61	0.00	0.00	2.28	1.14	1.14	0.91	4.76
Risi View	18.49	0.00	12.94	2.13	8.39	0.00	0.00	0.00	3.75	1.88	1.13	4.76
Platteklouf Glen	23.53	1.12	6.82	3.62	8.77	0.73	0.36	1.09	1.09	0.36	0.73	4.75
Kaapzicht	21.31	5.04	6.69	3.80	9.21	0.00	0.00	1.29	0.00	0.00	0.26	4.73
Langeberg Ridge (Kraaifontein)	17.73	4.20	6.61	3.01	7.89	0.00	1.41	2.34	2.81	0.94	1.50	4.69
Murdock Valley	14.92	0.00	13.22	6.90	8.76	0.00	2.65	0.00	0.00	0.00	0.53	4.65
Glen Ive	15.42	2.45	7.82	7.93	8.41	0.00	0.84	0.00	3.38	0.00	0.84	4.62
Tamboerskloof	12.66	2.54	13.70	4.36	8.32	1.11	0.65	0.87	0.87	0.65	0.83	4.57
Tokai	13.63	5.73	6.99	6.70	8.26	0.00	0.69	0.35	1.04	2.08	0.83	4.55
Stellenryk	12.97	3.08	11.02	7.14	8.55	0.66	0.00	0.66	1.31	0.00	0.53	4.54
Stellenberg	19.43	3.00	5.84	4.05	8.08	0.97	0.32	0.32	2.57	0.64	0.96	4.52
Valmary Park	11.34	1.83	10.47	10.42	8.52	0.00	0.00	1.29	1.29	0.00	0.52	4.52
Blommendal	16.50	2.76	7.20	3.03	7.37	0.81	0.80	1.61	4.82	0.00	1.61	4.49
De Duin	20.30	2.38	4.95	7.30	8.73	0.00	0.00	1.27	0.00	0.00	0.25	4.49
Sonnendal	16.59	1.46	9.41	6.26	8.43	0.00	0.00	0.00	2.41	0.00	0.48	4.46
Durmonte	18.49	4.69	4.65	2.80	7.66	0.00	0.00	0.00	5.87	0.00	1.17	4.42
Parklands	15.82	3.69	7.64	4.13	7.82	0.72	0.71	1.18	1.86	0.24	0.94	4.38
Rosendal (Bellville)	9.83	1.78	11.26	6.46	7.33	0.69	0.68	2.72	2.72	0.00	1.36	4.35

Spatial Variations in Levels of Living

SUBURB	% Adults (20+) with highest qualification < Matric	% of economically active unemployed	% Households earning < R19300 pa	% of labour force in unskilled occupations	S.E.S. Index	% Households living in Informal Dwellings	% Households with no access to electricity for lighting	% Households with no flush or chemical toilet	% Households with no potable water on-site or in-dwelling	% Households with no refuse removal by local authority weekly or less	Service Index	Levels of Living Index
Morgenster Hoogte	20.53	3.14	2.66	3.41	7.44	0.53	0.00	0.53	4.93	0.00	1.20	4.32
Lakeside	19.34	2.65	7.90	0.65	7.64	0.00	0.73	0.00	3.76	0.00	0.90	4.27
Sunningdale	14.44	2.81	6.23	2.90	6.60	1.86	0.74	1.85	4.77	0.37	1.92	4.26
Die Wingerd	17.95	3.35	8.05	3.64	8.25	0.58	0.00	0.00	0.00	0.57	0.23	4.24
Heldervue	11.37	4.38	9.53	4.16	7.36	0.00	0.74	1.12	3.41	0.37	1.13	4.24
Natures Valley	12.55	3.94	6.14	6.76	7.35	0.00	1.02	1.02	2.03	1.02	1.02	4.18
Country Places	17.82	4.03	4.33	5.67	7.96	0.00	0.00	0.00	1.47	0.00	0.29	4.13
Imhoff's Gift	13.33	8.33	5.83	0.00	6.87	6.97	0.00	0.00	0.00	0.00	1.39	4.13
De Bron	10.10	0.75	11.74	6.38	7.24	0.00	0.00	2.19	2.19	0.00	0.88	4.06
Helderberg Estate	13.70	1.92	6.30	7.53	7.36	0.00	1.26	0.00	2.52	0.00	0.76	4.06
Brackenfell South	16.25	4.12	4.11	0.94	6.36	1.44	2.80	2.80	1.40	0.00	1.69	4.02
Oranjezicht (Part 1)	13.58	1.75	7.05	4.06	6.61	2.50	2.33	2.33	0.00	0.00	1.43	4.02
West Beach	15.08	2.57	6.33	4.43	7.10	0.88	0.68	0.17	2.05	0.86	0.93	4.02
Plattekloof 1	14.31	2.41	3.72	10.11	7.64	0.00	0.00	1.81	0.00	0.00	0.36	4.00
Langgewacht	12.76	6.25	5.59	4.88	7.37	0.00	0.00	1.39	1.39	0.00	0.56	3.96
Sweet Valley	25.81	0.00	0.00	5.88	7.92	0.00	0.00	0.00	0.00	0.00	0.00	3.96
Stellenridge	15.67	1.43	8.08	3.69	7.22	0.00	0.00	1.04	2.08	0.00	0.62	3.92
Sunset Beach	10.42	2.44	6.77	7.16	6.70	0.00	1.13	0.00	4.54	0.00	1.13	3.92
Crest	8.42	4.40	8.94	2.07	5.96	0.00	0.00	0.00	9.20	0.00	1.84	3.90
Nerina Ext D29	15.06	6.12	2.22	4.78	7.05	0.00	0.00	0.00	2.18	1.09	0.65	3.85
Protea Valley	9.97	0.94	8.14	7.03	6.52	0.70	0.69	0.69	3.76	0.00	1.17	3.84
Vierlanden Heights	11.88	1.12	5.59	7.14	6.43	0.00	0.00	0.00	5.45	0.00	1.09	3.76
The Links (Urban)	8.65	2.74	12.10	6.50	7.50	0.00	0.00	0.00	0.00	0.00	0.00	3.75
La Rochelle	14.35	0.81	6.97	6.76	7.22	0.00	0.00	0.00	1.12	0.00	0.22	3.72
Bellville Ext 43	11.53	0.00	9.40	4.77	6.43	0.00	0.00	2.21	1.11	1.11	0.89	3.66
Zevenwacght	17.91	2.38	2.23	4.74	6.82	0.00	0.00	0.00	0.00	2.28	0.46	3.64
De Grendel	21.83	2.99	2.06	0.00	6.72	0.00	0.00	2.22	0.00	0.00	0.44	3.58
Langeberg Ridge (Durbanville)	20.41	1.69	2.43	1.98	6.63	0.00	0.00	0.00	2.41	0.00	0.48	3.55
Belvedere Noordhoek	8.11	6.67	5.07	8.00	6.96	0.00	0.00	0.00	0.00	0.00	0.00	3.48
Bellville Ext 44	11.00	3.57	8.04	3.88	6.62	0.00	0.00	0.00	0.00	1.13	0.23	3.42
Sonstraal Heights	10.82	2.15	6.00	3.81	5.70	0.21	0.41	1.02	2.35	1.64	1.13	3.41
Tierboskloof	10.44	2.70	7.48	3.16	5.95	0.00	0.00	1.82	1.82	0.00	0.73	3.34
Helderberg Village	10.21	7.35	6.57	0.00	6.03	0.00	0.42	1.26	0.84	0.42	0.59	3.31

Spatial Variations in Levels of Living

SUBURB	% Adults (20+) with highest qualification < Matric	% of economically active unemployed	% Households earning < R19300 pa	% of labour force in unskilled occupations	S.E.S. Index	% Households living in Informal Dwellings	% Households with no access to electricity for lighting	% Households with no flush or chemical toilet	% Households with no potable water on-site or in-dwelling	% Households with no refuse removal by local authority weekly or less	Service Index	Levels of Living Index
Uitzicht	13.68	3.66	7.13	1.98	6.61	0.00	0.00	0.00	0.00	0.00	0.00	3.31
Vredeklouf	14.38	2.29	4.15	4.35	6.29	0.22	0.22	0.22	0.79	0.22	0.33	3.31
Goedgemoed Ext D36	8.26	1.29	6.42	2.05	4.51	1.75	1.75	0.87	3.49	2.62	2.10	3.30
Kenridge Ext 3	8.23	1.40	10.91	2.16	5.68	0.00	0.00	0.00	1.80	0.00	0.36	3.02
Kenever Ext 2	12.21	1.00	5.53	3.06	5.45	0.00	0.00	1.38	1.38	0.00	0.55	3.00
Rosedale (Dutbanville)	8.92	3.23	9.12	1.14	5.60	0.00	0.00	0.00	1.74	0.00	0.35	2.98
Oude Westhof	9.59	0.00	2.02	1.24	3.21	2.06	3.96	1.98	1.98	1.98	2.39	2.80
Simonskloof	7.98	0.00	9.92	0.00	4.48	0.00	0.00	0.00	4.84	0.00	0.97	2.72
Hohenort	5.71	0.00	0.00	15.79	5.38	0.00	0.00	0.00	0.00	0.00	0.00	2.69
Old Oak	13.39	0.00	5.40	1.63	5.11	0.00	0.00	0.00	1.10	0.00	0.22	2.66
Froggy Farm	2.26	0.00	8.36	6.67	4.32	0.00	3.99	0.00	0.00	0.00	0.80	2.56
Dennendal	10.51	0.00	0.00	3.13	3.41	0.00	4.21	0.00	4.21	0.00	1.68	2.55
Hume Ext 29	18.29	0.00	0.00	0.00	4.57	0.00	0.00	0.00	0.00	0.00	0.00	2.29
San Michel	8.02	0.00	1.74	2.98	3.19	0.00	0.00	0.00	3.48	1.74	1.04	2.11
Sunsetlinks	0.00	0.00	0.00	0.00	0.00	0.00	0.00	0.00	0.00	0.00	0.00	0.00
Cape Town	62.03	29.38	39.00	21.46	37.97	18.90	11.19	12.47	15.58	4.18	12.46	25.22

Source: 2001 Census, Statistics South Africa