

Pick `n Pay Waste & Recycling Programme

Sustainability – 4 pillar strategy

Economic sustainability

- Business risks & corporate governance
- Sustainable Partnerships

Transformation

- Business transformation
- Supplier transformation

Social development

- Sustainable communities

Environmental responsibility

- Climate change and carbon footprint
- Waste, packaging & recycling
- Sustainable products

Brand & Communication

Our approach to waste management and recycling

1:
Reduce

Focus on:
Waste minimisation
Upstream influence

2
Reuse

Focus on:
Design

3:
Recycle

Focus on:
Behaviours
Accessibility

Components of our Waste, Packaging and Recycling Programme

■ 3 tier programme

1: Waste Management

Store programme:

Staff education
Waste sorting/recycling

Office programme:

Staff education
Batteries
CFL's
Worm bins
E-Waste
Paper
Ink Cartridges

2 Packaging Reduction

Own brand:

Packaging analysis
Dynamic database

Supplier brand:

Influence

3: Consumer Recycling

Instore programme:

Staff education
Customer access
Distribution
Batteries
CFL's

Waste management - store

- * **Store waste management programme introduced 2006**
- * **2 Supermarket and 1 Hyper study completed beginning 2007**
- * **Pilot programme implemented 2007 in 9 stores across all regions**
- * **Natal waste management programme implemented in all Natal stores**
 - **currently recycle 40% in weight and 74% in volume at all stores**
 - **sort across all categories of waste (paper, cardboard, plastic, glass, tin, food and general)**
- * **Rollout across Gauteng stores underway**
- * **Follow up in Northern Region and Cape areas thereafter**
- * **Further developments in the pipeline**

Waste management – head offices

* Introduced during 2008

- Programmes:
 - - Battery
 - - CFL
 - - Paper
 - - Ink cartridges
 - - Worm bins in Johannesburg and Western Cape Offices
- Currently introducing a 2 bin system into Johannesburg office
- E-waste programme introduced during 2007

Packaging Reduction

1:

Packaging own brand

- Commitment to sustainability
- Packaging own brands and instore packaging including plastic bags
- Development of packaging database
- Consumer campaigns to reduce packaging and introduce alternate bags

2

Packaging supplier brands

- Major supplier packaging commitments
- Influence suppliers
- Store level recycling

Consumer Recycling

1: Batteries



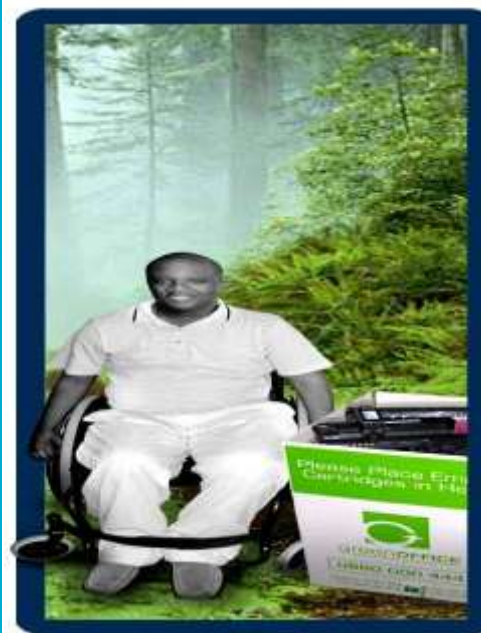
Rechargeable Uniross
batteries programme

2: CFL's





ROHS approved CFL
Philips lamp programme

3: Other



Ink cartridges
Paper & plastic

CFL campaign



Bright idea **Brighter idea**

It doesn't take a genius to know that using an energy saving light bulb is a brilliant idea. Switch to CFLs, (compact fluorescent bulbs), they'll save you anything from 25% to 40% in power consumption.

Turn off lights in unoccupied rooms, put low energy lights in your garden, better still, install motion sensors so they only come on when they're actually needed.

Show everyone you're doing your bit, drop into your local Pick n Pay and sign your pledge to reduce your family's consumption. You'll be automatically entered into our draw and you could be one of 50 customers who will win R5000 every month.

Start saving power today, you'll save yourself a lot of money and you could help save the planet. That really is a bright idea.



Terms and conditions apply. www.picknpay.co.za

CFL campaign

Pick n Pay
Inspired by you

How much energy did that take?



Remember, half a load uses as much energy as a full load. Unplug your computer. Turn your TV, Hi-Fi, DVD and i-pod charger off stand-by. Switch off all your appliances at the wall when you're not using them. Use your washing machines, tumble driers and dishwashers outside of peak hours.

Show everyone you're doing your bit, drop into your local Pick n Pay and sign your pledge to reduce your family's output. You'll be automatically entered into our draw and you could be one of 50 customers who will win R5000 every month. Starts saving power today, you'll save yourself a lot of money and you could help save the planet. It won't take much effort at all.

Take the Pick n Pay Power Pledge



From 20 October 2008 www.picknpay.co.za

Pick n Pay

CFL campaign

Pick n Pay
Inspired by you

**Bedtime should be
one big turn off**



Before you slip into bed at night take a walk around your house. Switch your appliances of stand-by, turn your geyser down a bit, 60 degrees is the recommended level, change the temperature of your fridge, it's probably too cold anyway. Every little helps.

Show everyone you're doing your bit, drop into your local Pick n Pay and sign your pledge to reduce your family's consumption. You'll be automatically entered into our draw and you could be one of 50 customers who will win R5000 every month.

Start saving power today, you'll save yourself a lot of money and you could help save the planet. That should make us all sleep a little easier.

Take the Pick n Pay Power Pledge



Terms and conditions apply. www.picknpay.co.za

Pick n Pay

CFL campaign

Pick n Pay
Inspired by you

Get the old geyser a new jacket



Even if it's new your geyser should be insulated along with the first 1.5m of piping, that can reduce heat loss by up to 51%. Turn it down a bit, the recommended level is 60 degrees. A timer switch will help you control the number of hours it's actually on and allows you to use it during off peak hours.

Show everyone you're doing your bit, drop into your local Pick n Pay and sign your pledge to reduce your family's consumption. You'll be automatically entered into our draw and you could be one of 50 customers who will win R5000 every month.

Start saving power today, you'll save yourself a lot of money and you could help save the planet. You're never too old to start.

Take the Pick n Pay Power Pledge



*See our conditions page | www.pnpay.co.za

Pick n Pay

CFL campaign

Pick n Pay
Inspired by you

**When you shut the
door the light goes off.
Nice idea.**

It's a simple thing that saves energy. Try the same thing in other rooms of your house, when they're unoccupied switch off the lights. When you shut the front door make sure they're all off.

Turn your fridge down, don't overfill it, circulating air is more efficient for cooling, then again keep your freezer full, frozen objects keep others around them colder, using less energy.

Show everyone you're doing your bit, drop into your local Pick n Pay and sign your pledge to reduce your family's output. You'll be automatically entered into our draw and you could be one of 50 customers who will win R5000 every month.

Start saving power today, you'll save yourself a lot of money and you could help save the planet. That's definitely a nice idea.



Take the Pick n Pay Power Pledge



Terms and conditions apply. www.picknpay.co.za

Pick n Pay

Recycling Campaign

Pick n Pay

Inspired by you

Be Bright. Recycle.

On June 4, a press release will announce a new Pick n Pay recycling initiative for energy efficient bulbs and batteries.

This will be supported by the following campaign elements:

- Recycling bins – delivered between 13 – 16 June
- Website information – live by 17 June
- Billboards (only at Longmeadow and Kensington Head Office) by 17 June
- Hypers and Supers Press Ad panels (w/c 17 June)
- Pick n Patter July
- Part of Your Life June newsletter
- Junxion – live by 17 June

As an environmentally aware and caring company, we're asking customers to bring in their used energy efficient bulbs and batteries, and place them in two specially designed recycling bins so that we can recycle them – instead of customers throwing them away in their normal household rubbish bins.

Battery Recycling Logistics

Partnership with Uniross rechargeable batteries

Provision of a recycling service essential

- * Uniross team merchandising in Pick `n Pay stores on a regular basis**
- * Collection of disposed batteries when required**
- * Batteries taken to Midrand plant and sorted**
- * Non-rechargeables sent to hazardous landfill, rechargeables sent to Paris for recycling**

Battery recycling campaign press

[BUSINESS - GREEN IT]

Pick n Pay launches battery recycling project

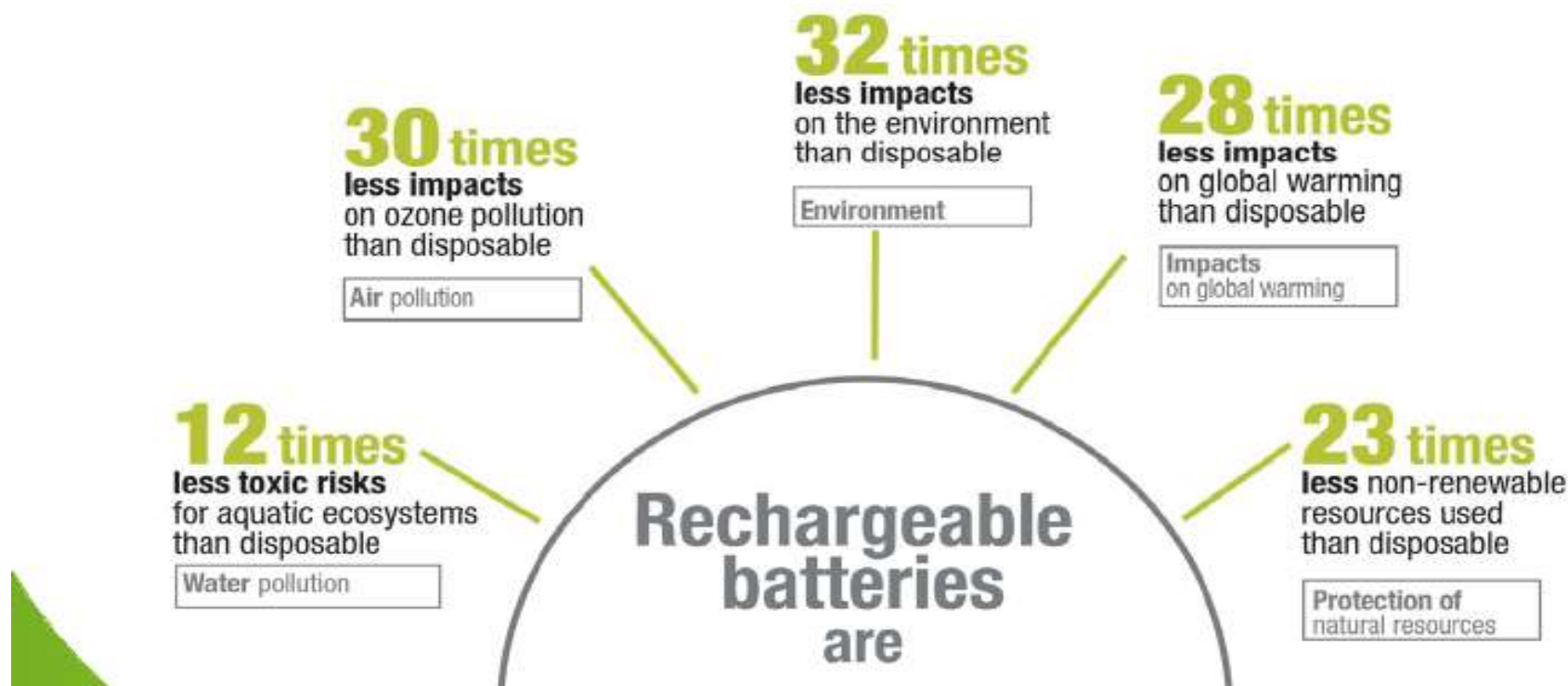
PICK N PAY has launched a battery collection and recycling project in a bid to help cut environmental pollution caused by discarded batteries. The project is being run in conjunction with Uniross SA.

South Africa disposes of close to 100 million batteries annually, but none are recycled. "Rechargeable batteries address the harmful environmental effects of disposable batteries because they can be reused up to 1 000 times," says Uniross GM Kevin Rogers. Pick n Pay customers will be able to discard their old batteries in special bins at its stores and Hypermarkets country-wide. The batteries are collected by Uniross and taken to their factory in Midrand, from where they will be recycled or properly disposed of.

– Staff Reporter



Why rechargeable batteries?



CFL recycling campaign and logistics

- * **Partnership with Philips**
- * **Support of Eskom campaign to provide a recycling service**
- * **Temporary bins launched into all Pick `n Pay stores**
- * **Amplux (Philips merchandising support company) service of all stores on merchandise extended to manage recycling**
- * **Amplux collects disposed CFL's each week from Pick `n Pay**
- * **Collections from stores per region taken to Amplux offices in each region**
- * **Waste company collects CFL's and disposes of them responsibly as per legislative requirements**
- * **Philips manufacturing factory in Lesotho up and running during 09. Recycling facility to be established thereafter**
- * **Reclite to establish recycling facility on West Rand**

CFL recycling campaign and logistics

- * **Partnership with Philips**
- * **Support of Eskom campaign to provide a recycling service**
- * **Temporary bins launched into all Pick `n Pay stores**
- * **Amplux (Philips merchandising support company) service of all stores on merchandise extended to manage recycling**
- * **Amplux collects disposed CFL's each week from Pick `n Pay**
- * **Collections from stores per region taken to Amplux offices in each region**
- * **Waste company collects CFL's and disposes of them responsibly as per legislative requirements**
- * **Philips manufacturing factory in Lesotho up and running during 09. Recycling facility to be established thereafter**

Focus for 2009

- Rollout of store waste plan across company
- Introduction of pilot consumer recycling facilities at our stores
- Embed e-waste initiatives within company
- Education of staff and customers
- Continual participation in waste strategy for South Africa

Pick **n** **P**ay

Inspired by you