

Izityalo ezinesitswele (ezine-Bulbs/Corms)

Inkoliso yazo zezona zilungileyo ukusetyenziswa. Ubukhulu becala zifumaneka e-Watsonias, e-Chinkerinchee nase-Knysna lily (Cyanthus), e-Moreas, e-Amaryliss, e-Freesias, nase-Ixias njalo-njalo. Iintlobo ze-Agapanthus, luhlobo apho luthi lumelane nembalela kwaye lusisigqubutheli esifanelekileyo, nangona ingelohlobo lunea-halbhhu.

Izityalo ezihlala ixesha elide (unyaka)

Zimbalwa izityalo ezithabatha ixesha elide, zikwimeko exolisayo, kodwa ngokusebenzisa izigcina kufuma emhlabeni (i-MULCHING) nangokukhetha iintlobo-ntlobo ezikhoyo ngokufanelekileyo, ungatsho ngesitya sakho esibukekayo.

Ukulungiswa komhlaba

Ukusetyenziswa kwe-Mulching kunye nekomposi, uzuza oku kulandelayo:

- kugcinekala ukufuma nokuncipha kokutshintsha kwamanzi abengumphunga,-aye ephela ngokuphela
- ubushushu buyabambeka bungaphumeli emhlabeni kwaye ugcinakale umhlaba uhlale upholile
- kunciphe ukutshintsha-tshintsha kwamaqondo obushushu, kuphuculeke imeko yomhlaba (uchume) ngokongezeleka
- kwezondlo/ izichumiso ngenkqubo yokwenziwa kwekomposi (isivundiso).

Iindiza/amadiza, amaxolo emithi, amahlalutye, iingqalutye, ingqokelela yamatye nentlabathi, amaqokombe eenqoba (amaqokombe eziqhamo zendalo) namagqabi, zezinye zezixhobo ezinokusetyenziswa xa usenza i-mulching. Kubalulekile ukugcinwa kwamanzi ngumhlaba ngendlela ngokwendlela asetyenziswa ngawo (amanzi) zizityalo. Zama ukusebenzisa isixhobo esifumisa umhlaba ukuncedisana nomhlaba ukuba ukwazi ukufunxa nokugcina amanzi ixesha elide.

Ukunkcenkeshela

Amanzi angwevu okanye lawo ubani athi awalahle emva kokuba ewasebenzisile ekhaya, kwenziwa incitho ngawo, endaweni yokuba asetyenziswe esityeni/egadini. Abantu abaninzi baneendlela ezithile abaziyilileyo zokufumana, bagcine amanzi okuzicoca (ukuhlamba) nawemvula, ukuze bakwazi ukunkcenkeshela ngawo esityeni.

Ngokwezithintelo zokusetyenziswa kwamanzi, uluntu luvumeleke kuphela ukunkcenkeshela ngokwamaxeshla amiselweyo, ngeentsuku ezithile - phambi kweye-10:00

kusasa okanye ebusuku emva kwentsimbi ye-17:00 (kukwax-homekeka kwizinga elo lwezithintelo). Xa ubani enkcenkeshela kusasa, oko kubangela ukuba abemancinci amanzi alahlekayo ngokwenkqubo yokulahleka kwamanzi ngokomphunga (okuzenzekela ngokwendalo). Izityalo ezithile ziye zikhule ukubola-kungunde iityantyambo nee-zinnias, iiloni zibenomhlwa(irusi)

Inkqubo yokunkcenkeshela EYILWE NGENDLELA EFANELEKI-LEYO ingonga amanzi asusela kwi-30% ukuya phezulu. Qinisekisa ukuba isixhobo sakho sokunkcenkeshela sivaliwe xa imvula isina. Izityalo zakho mazibeneengcambu ezinde ukuze ungasoloko unkcenkeshela amaxesha onke. Oku kukhuthazwa ubukhulu becala kwiiloni.

Isiphelo

Kubalulekile sikuqonde ukuba isitya esilungiselwe ukuba sisebenzise amanzi ngabuchule/ngokonga ngokokwangoku, siya kuhlala ngokuqhubeka ukonga amanzi hayi kule minyaka ilandela lo sikuwo kuphela, kuya kude ibe yiminyaka engama-40 okanye ama-50 ezayo, apho kuqokeleka ukuba ingxaki yokunqongophala kwamanzi iya kube ingaphezulu kunoku.

Unceli-mngeni esijongene nawo sonke kukusebenzisa amanzi alinganiselweyo kwizitya zethu - njengendlela eyiyo yobomi. Kwakhona ukuze libonakale eli phulo njengelsebenzayo, kufuneka sizinikele ekutyalweni/londolozeni kwentyantyambo ezikudidi lwezityalo zemvelo, ezifumaneka apha kwiPhondo lwethu iNtshona Kapa.

Ukongama amanzi indlela yobomi



Ukongama amanzi, indlela yobo-
Ukudala isitya
esisebenzisa
amanzi
ngobuchule



Intshayelelo

Amanzi asetyenziswe ngokwemibhobho emiselwe ngumasipala ukuba kunkcencshelwe izitiya kwiidolophu zethu nakwisixeko aqikeleleka kwisixa esingama-36%, kumanzi ewonke asetyenziswe ekhaya. Sisixa esimangalisayo nesingam-kelekanga esi, njengoko sikwilizwe elifumana kuphela imvula engama-497mm ngonyaka. Ixesha lasehlotyeni elinemozulu eyomileyo yenza izinto zibembi ngakumbi (ingxaki yokunqongophala kwamanzi inyuke).

Ukuze isitiya sakho sibenakho ukugcina amanzi, kwaye sibekwimeko ebukelekayo; funeka izityalo ezinakho ukuhlala ixesha elide zingafumani - manzi, mazityalwe ndawonye. Kuyimfuneko ebalulekileyo ukuba thina balondolozizi-ziya siziqhelanise nezityalo okanye sityale izityalo ezikwaziyo ukumelana nembalela ukuze sikwazi ukulondolozisa amanzi kwizitiya zethu. Ngaphandle nje kokuchonga kwethu okumandla kwezityalo zendalo, kukho imfuneko enkulu yokuchonga izityalo ezikwaziyo ukumelana nembalela - ithi ke le ndlela ingasiwa-so ngonozitya xa belungiselela (bechonga) izitya zabo. Izityalo zemvelo ezifumanekayo kuthi, zenziwe yindalo ukuba zikwazi ukumelana neenzima zembalela yommandla wethu, ke ngoko zifanelekile ukuba zisetyenziswe kwisitiya esilungiselelwe ukuba sisebenzise amanzi ngobuchule (ngendlela yokonga amanzi). Ezinye izityalo ezikuluhlu lale ncwadana ayizozemvelo, ukanti ezinye zezemvelo. Umzi okufutshane nawe othengisa izityalo, uya kuvuyiswa kukundwendwela kwakho, ufuna iingcebiso ngokuphathelene kulo mbandela. (Jonga isityalo esinomfanekiso/inkwenkwezi ebonakalisa ukusebenzisa amanzi ngengqiqo).

Imithi

Kukho imithi emihle nekwaiziyo ukumelana nembalela enjengale: i-*Acacia Karoo, i-*Rhus Pendulina, i-*Rhus Lancea, i-*Dodonea Ongustifolia (sand olive), i-*Sysigium Cordtina, i-Olea (olive), i-*Cussonia (cabbage tree), neminye emininzi. Phambi kokuba uwutyale, phonononga indawo efanelekileyo eyaba kwisitiya sakho, sikwazi ukumelana nokukhula kwaso nobume bayo.



*Inqabile

Imithana/ityholo

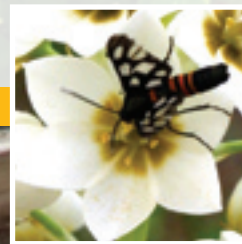
Mininzi imithana emihle, eshinyeneyo kwaye yahlukile ubungakanani bawo nokukhula kwayo, ekwaziyo ukumelana nembalela, eya kuthi yenze isiseko esihle sesitiya sakho. Le mithana ungayisebenzisa njengekhusele ukukhula kwemithana emininzi engafunekiyo ii-perennials nebambe umhlaba. Izitya ezizizo ziyacwangciswa ngendlela efanelekileyo, kusetyenziswa imithana eyahlukeneyo, ii-perennials, ii-bulbs nee-climbers ezikhula kumhlaba omnye neemfuno zamanzi ezifanayo, apho ziya kuthi zikunike imbonakalo entle yonyaka. Eminye yemithana emihle neyomeleleyo yile ilandelayo:

I-*Bauhinia galpinii (Pride of the Kaap), i-*Brachylaena (ilungele izitya ezikufutshane nolwandle), i-*Buddleia, i-*Coprosmia (mirror plant), i-*Myrtus, i-*Ochna serrulata, i-*Portulacaria, i-*Raphiolepis kunye ne-*Viburnum tinus. Imithana emincinane yemiyezo inxulumanisa udidi olude kunye nolwe-perennials. Ngenxa yokuba ziluhlobo olushinyeneyo, zingasebenza njengezigqubutheli zomhlaba, kuxhomekeke indlela ezikhula ngayo. Zama ukuba usebenzise ezinye zeentlobo ezikwaziyo ukumelana nembalela ezizezi: I-*Barleria, i-*Cistus, i-*Carissa, i-*Coleonema, i-*Helicichrysum, i-*Rosmarinus (rosemary), i-*Salvia africana, i-*Sutherlandia, i-*Dimorphotheca cuneata (bride'd bouquet), i-*Euphorbia mauritanica, i-*Hermannia stricta (desert rose), i-*Sutera grandiflora, i-*Lavandula dentata (lavender), i-*Westringia variegata, i-*Eriocephalus (wild rosemary), nezinye ezininzi.

Iintlobo ze-Perennials ne-Succulents

Ezinye zazo iintlobo ezaziwayo zezi: I-*Gerbera jamesonii (Barberton daisy), i-*Kniphofia uvaria (red hot poker), Amakhala (i-*Aloes), i-*Gaura, i-*Arctotis, i-*Crassulas, i-*Euphorbia, Felicia, i-*Lampranthus, i-*Pelargoniums, i-*Diets ne-Sansevieria.

Ukongamanzi indlela yobomi



*Inqabile

Izigqubuthelo zoMhlaba

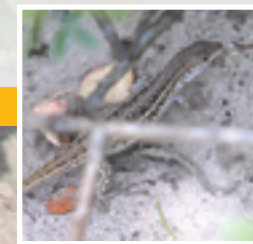
Iintlobo zezigqubuthelo zomhlaba ezilungileyo zii-Lampranthus, i-Erigeron Osteospermum (ingakumbi kwimimandla eselunxwemeni lolwandle), i-Carpobrotus ne-Sutera. Ukuba ufuna umbala oqaqambileyo, zama i-bulbine caulescens apho uyakutsho ngombala obukelekayo otyheli kwiintyatyambo zakho.

Ingca

Elona hlobo lwengca efanelekileyo emayisetyenziswe yi-Buffalo (i-Stenotaphrum secundatum), etsho ngamagqabi ayo abanzi naluhlaza ngombala. Olu hlobo lulengele iiloni ezimelene nelanga okanye umthunzi kwakhona kutshiphu ukuzinakekela kwaye zisebenzisa amanzi amancinci. Ubukhulu becala, iiloni zifuna amanzi amaninzi xa zithelekiswa nemithana yemiyezo/iintyatyambo. Iya kuba bubulumko ukuba ubani acingisise ngobungakanani beloni ayifunayo, njengoko amanzi aya kongeka xa usebenzisa ibala okanye iindledlana zokuhamba, amabala, iipavumente, njalo-njalo emzini wakho.

Izityalo ezinabileyo ii-Creepers nee-Vines

Ii-Creepers ne-vines zibalukekile kakhulu ukusetyenziswa nakwesiphina isitiya, njengoko zisigqubutheli esibukelekayo ezisetyenziswa njengesikhuseli kwilanga, zibhijele iipali ezimiswe emhlabeni ezikwayimichankcatho yokuhamba nakumizobo engasemva yeqonga sesitiya. I-Bougainvillea naso sityalo esaziwayo semvelo kunye (ne-Cape Honeysuckle) i-*Tecomaria, ne-Plumbago ezigqamileyo ngokwaziwa. I-Geranium, i-Pelargonium peltatum, i-Jasminum multipartatum, i-*Gelsemium jasminoides, Senecio tamoides (canary creeper) zezinye zeentlobo ezibukelekayo ezinokusetyenziswa, eziphantsi kolu didi.



*Inqabile