



**CITY OF CAPE TOWN
ISIXEKO SASEKAPA
STAD KAAPSTAD**

REPORT TO ALL SUBCOUNCILS

1. ITEM NUMBER : 01SUB 06/11/2020

2. SUBJECT

CITY FESTIVE SEASON PREPAREDNESS PLAN: 2020/21

**ISICWANGCISO SESIXEKO SOKULUNGELA IIHOLIDE ZEHLOBO:
2020/21**

**STAD SE GEREEDHEIDPLAN VIR DIE FEESGETY: 2020/21
LSUA7193/B4350**

3. PURPOSE

The purpose of the report is to provide all Sub-Councils with an overview of the preparations for the 2020/21 Festive Season.

4. FOR DECISION BY

For noting by all Sub-Councils

5. EXECUTIVE SUMMARY

The Festive Season period, commencing in November 2020 and running well into the New Year, brings increased risk of incidents that could affect public safety as well as the delivery of services by the City of Cape Town. This year, such activities will bring additional risk due to the COVID-19 pandemic and the plan accordingly seeks to manage these additional risks.

The City's Festive Season Preparedness Plan for 2020/21 as approved by EMT is attached for noting. The detailed annexures which are specific departmental plans of the various directorates of the City are not attached as this will make the submission extremely bulky. These annexures can, however, be made available on request.

Making progress possible. Together.

6. RECOMMENDATIONS

Recommended:

- a) That the report on the City's Festive Season Preparedness Plan, be noted.
- b) That it be noted that a Festive Season Coordinating Committee comprising representatives from all relevant Directorates has been established and mandated by EMT to play a City-wide coordination role regarding readiness for the Festive Season and the integration of Festive Season operational planning by various line departments.
- c) That it be noted that EMT tasked the Executive Director for Safety and Security to head up the Festive Season Coordinating Committee.
- d) That it be noted that EMT Members will monitor and evaluate the preparedness of their directorates for the Festive Season.

Kundululwe:

- a) Ukuba makuqwalaselwe ingxelo yeSicwangciso sesiXeko sokuLungela iiHolidi zeHlobo.
- b) Ukuba makuqwalaselwe ukuba kumiselwe iKomiti yoQuquzelelo lweeHolidi zeHlobo enamalungu amele onke amacandelo olawulo afanelekileyo kwaye yagunyaziswa liQela leSigqeba sikaSodolophu (EMT) idlale indima yokuququzelela kwisiXeko sisonke ngokuphathelene nokulungela iiholide zehlobo nokufakelwa kokucwangciswa kokusebenza kweeholide zehlobo ngamasebe ohlukeneyo.
- c) Ukuba makuqwalaselwe ukuba iQela leSigqeba sikaSodolophu (EMT) linike uMlawuli wesiGqeba soKhuselo noKhuseleko ukuba umsebenzi wokukhokela iKomiti eQuquzelela iiHolidi zeHlobo.
- d) Ukuba makuqwalaselwe ukuba amalungu eQela leSigqeba sikaSodolophu (EMT) aya kubek' iliso kwaye avavanye ukulungela iiholide zehlobo kwamacandelo awo.

Aanbeveel:

- a) Dat daar kennis geneem word van die verslag oor die Stad se gereedheidsplan vir die feesgety.
- b) Dat daar kennis geneem word dat die EMT 'n koördineringskomitee vir die feesgety bestaande uit verteenwoordigers van alle betrokke direktorate, gestig het en 'n mandaat gegee het om 'n Stadswye

koördineringsrol te speel in feesgety-gereedheid en die integrasie van bedryfsbeplanning vir die feesgety deur verskeie lyndepartemente.

- c) Dat daar kennis geneem word dat die EMT die uitvoerende direkteur: veiligheid en sekuriteit die taak opgelê het om die feesgety-koördineringskomitee te lei.
- d) Dat daar kennis geneem word dat lede van die EMT hul direktorate se gereedheid vir die feesgety sal monitor en evalueer.

7. DISCUSSION/CONTENTS

The City's Festive Season Preparedness Plan for 2020/21 is attached for noting.

7.1. Constitutional and Policy Implications

This report does not have any Constitutional or Policy Implications.

7.2. Sustainability implications

Does the activity in this report have any sustainability implications for the City?	No <input checked="" type="checkbox"/>	Yes <input type="checkbox"/>
---	--	------------------------------

7.3. Legal Implications

This report does not have any legal implications.

7.4. Staff Implications

Does your report impact on staff resources or result in any additional staffing resources being required?

No ☒

Yes ☐

7.5. Other Services Consulted

- 1) Metro Police, Traffic Services and Law Enforcement
- 2) Disaster Risk Management
- 3) Fire and Rescue
- 4) Events
- 5) Social Development
- 6) TDA
- 7) MyCity

- 8) Recreation and Parks
- 9) Health
- 10)SCM
- 11)Solid Waste Management

ANNEXURES

Annexure A: City's Festive Season Preparedness Plan

FOR FURTHER DETAILS CONTACT :

NAME	Anton Visser
CONTACT NUMBERS	0823125176
E-MAIL ADDRESS	Anton.Visser@capetown.gov.za
DIRECTORATE	Safety and Security
FILE REF No	31/3/3/3 <i>Anton</i>

CITY OF CAPE TOWN
EXECUTIVE DIRECTOR
SAFETY AND SECURITY

EXECUTIVE DIRECTOR
 Richard Bosman 13 NOV 2020

NAME _____

DATE _____

SIGNATURE: _____

Comment:

FESTIVE SEASON PREPAREDNESS PLAN

FOR 2020/21



CITY OF CAPE TOWN
ISIXEKO SASEKAPA
STAD KAAPSTAD

INTRODUCTION

The Festive Season brings increased risk of incidents that could affect public safety as well as the delivery of services by the City due to increased visitors, increased internal movement of residents for leisure purposes, and increased leisure activities such as events and festivities during this period. This year, such activities will bring additional risk due to the COVID-19 pandemic and the plan accordingly seeks to manage these additional risks.

The purpose of the Festive Season Preparedness Plan is to identify possible public safety and service delivery risks, and to mitigate against these risks through appropriate operational and resource planning.

Implementation of the Plan will be done by means of a transversal management structure that includes the following:

- a) Continuation of the Disaster Coordination Team which is a multi-disciplinary forum established for purposes of coordinating the operational response of City departments to the COVID-19 pandemic
- b) Establishment of the Festive Season Coordination Committee which is a City-wide coordination structure
- c) The establishment of temporary local coordination structures (joint operations centres) for purposes of promoting and ensuring safety on beaches, providing adequate emergency service resources, dissemination of public safety information and sustained cleanliness of public amenities.

This strategy is supported by the Festive Season plans of various line functions which includes the following specific interventions and arrangements:

1. SAFETY AND SECURITY

1.1 Festive Season Policing Plan

2260 operational members from the Metro Police, Traffic Services and Law Enforcement will be deployed in accordance to the combined Festive Season preparedness plan of the three policing departments.

The plan identifies the operational focus areas, priority deployment areas, agreement on Joint Operational Centres, staff resources, media liaison, special instructions and other important objectives that these three departments will share during this period.

Joined operational focus areas will include the prevention of land invasions, safety at beaches and other recreational destinations as well as the management of protest actions. All policing services will be delivered with due cognizance of the prevailing threat posed by COVID-19.

The complete plan is attached as Annexures A.

1.2 Fire & Rescue Service: Festive and Summer Season Contingency Plan

The City's 900 professional firefighters can be called upon for major incidents. A minimum of between 200 and 240 of these firefighters will be on duty per shift and available on a 24-hour basis at the 32 fire stations across the city. 120 seasonal firefighters (specially trained wildland firefighting crews) will be deployed at designated fire stations as from 1 December 2020 to the end of April 2021 to assist the full-time firefighting staff with veld fires and veld-fire management and prevention methods. In addition, 29 learner firefighters are expected to graduate end October and will be available to assist with fires and other incidents.

The Department will have access to the services of helicopters which will be at its disposal from 1 December through to April 2021. Rescue Diving units equipped with rubber ducks and jet skis are fully operational and will be available during this period.

The Department will also strive to increase its inspections and awareness campaigns at organized festive season events and venues to ensure compliance with fire safety regulations. As always, the Department will work closely with Table Mountain National Park and their volunteer wildfire services, Working on Fire and qualified Disaster Risk Management volunteers during this time.

With regard to COVID-19, safety protocols have been put in place to ensure continued service delivery over the festive/summer period.

The complete plan for the Fire and Rescue Service is attached as Annexure B.

1.3 Disaster Risk Management

The Disaster Risk Management Centre (DRMC) will coordinate major incidents or disasters in accordance with the Municipal Disaster Management Plan, and applicable risk specific plans, and if need be the Disaster Co-ordinating Team (DCT) comprising of multiple role players, can be activated to assemble (or utilize Skype) in the Disaster Operations Centre (DOC) in Goodwood at short notice, to oversee and manage the emergency incident/ disaster at hand.

The applicable regulations to manage the COVID-19 pandemic will determine the Disaster Risk Management's Centre's operational and deployment plan.

On high risk days, DRMC personnel, volunteers and resources will be deployed across the metropolitan area at beaches, swimming pools and tourist destinations to assist with crowd management and first aid assistance.

The Disaster Operation Centre (DOC) will monitor all scheduled activities/events and will keep the Festive Season Coordinating Committee informed.

It is important that families in the City of Cape Town implement a Family Preparedness Plan to assist them in the event of having to deal with a major

disaster or emergency situation. The Disaster Risk Management Centre has prepared the such a plan to be used by families that considers three important aspects. This includes the preparing of a family disaster supply kit. Further information on this Family Preparedness Plan can be obtained at the following website:

<http://resource.capetown.gov.za/cityassets/Media%20Centre%20Assets/1718GD250A4DRMFamilyDisasterpreparednessEnglishdraft%201.pdf>

1.4 Public Emergency Communication Centre

As the first port of call for any emergency the PECC provides a 24-hour call taking service for all life-and/or-property threatening incidents.

As always, the 67 call takers will be on duty in a four shift system. Any given day a minimum of 14 call takers will be on duty. Depending on the situation or event, additional staff will be brought in to cover the influx of calls. The call centre is supported by various teams that include administration, finance, technical and quality assurance.

Education and awareness activities will continue as per the Centre's annual plan. In addition, the PECC will also form part of the Summer campaign and any other ad hoc campaigns as requested. The PECC will also form part of the Festive Season Committee.

Contact numbers:

For any emergency: 021- 480 7700 from a cell phone and 107 from a Telkom landline

POSITION	NAME	OFFICE NUMBER
Head: Operations	Jaco Groenewald	0214807743
Head: Service quality	Estelle-Mare Ward	0214449586 0836853460
Manager	Suretha Visser	0214872045

1.5 Neighbourhood watch support

The Directorate will ensure the 24-hour availability of a community safety liaison officer throughout the Festive Season who can assist neighbourhood watches with additional equipment in the event of emergencies e.g. an extended community search for a missing person, assisting with the mitigation of a disaster or other serious event. For this purpose, the Directorate will ensure the availability of selected items which can be delivered to the scene of an emergency on short notice. This will include: hand-held spotlights, flood lights, fire extinguishers, reflective safety bibs, limited reach radio communications equipment, spades, PPE etc.

Emergency contacts during this period are as follows:

Period	Contact name	Cell phone number
15 to 28 November	Marco Boer	0732365903
29 November to 14 December	Samuel Simons	0781493213
15 to 30 December	Shaun Homani	0832075051
31 December to 15 January	Russell Dudley	0713426341

The section will continue to observe COVID-19 protocols and where necessary assist neighbourhood watches to do the same.

1.6 Conduct and discipline

The Directorate's Investigation Unit will be at full strength during this period to ensure that any complaints received from the public are dealt with swiftly and decisively. The Directorate expects from its members that their conduct at all times be above question and it will therefore endeavor to ensure that a high level of discipline is maintained in all its Departments. Members of the public can submit complaints via the City's toll-free 24/7 fraud hotline: 0800 323 130.

1.7 Workplace trauma management within the Safety and Security Directorate

The trauma counselling service will ensure the continuation of adequate support to all officials of the Directorate during this period. The service is available on a 24hour basis. Strict Covid-19 protocols will be observed.

Trauma services entail access to Trauma Defusing, Trauma Debriefing, Bereavement counselling, as well as support for work related Psychosocial difficulties.

The service can be accessed via 107, respective line manager or the various control rooms. The aim of the service is to offer immediate support, mitigating the onset of post-traumatic stress and prepare the member for further counselling if required.

1.8 Film and Events Permitting Office Festive Season Plan

The Film and Events Permitting Office will focus on the following main areas in terms of the Festive Season Readiness Plan:

- a) film and event co-ordination processes which will be undertaken through, inter alia, multi-disciplinary Events Operational Co-ordination Committee meetings, film co-ordination meetings; planning meetings, etc.
- b) the permitting of events and film-related activities across the city,

- c) engagement with various internal and external role-players and stakeholders regarding the hosting of safe and compliant events and filming across the city,
- d) co-operation with relevant departments, role-players and SAPS regarding the facilitation, coordination and monitoring of events and film activities across the city, and
- e) ensure implementation of the Standard Operating Procedures (SOPs) developed to establish protocols and COVID-19 mitigation measures for Film Production and Event Production in the City.

More detailed information is provided in Annexure C.

2. COMMUNITY SERVICES AND HEALTH

2.1 City Health Plan

During the period 1 November 2020 to 31 March 2021 the City Health Department will sustain its routine operational functions with an increased focus on the monitoring of:

- drinking and recreational water in conjunction with Scientific Services,
- food, accommodation and entertainment premises,
- public ablution facilities,
- events and festive season food markets.
- enforcement of tobacco legislation
- monitoring of premises where activities that may contribute to the spread of COVID 19 occur.

Staffing

Existing human resources will be managed to ensure that service delivery as per the City Health Business Plan continues over the festive season. Should emergency conditions warrant the deployment of staff outside of normal working hours, City Health requirements as it relates to the granting of TOIL and overtime will be complied with. All facilities, with the exception of some satellite clinics, will remain operational for the normal working hours and days as staff leave is planned to ensure continued operation. The Department will ensure that the required level of staffing is in place to respond to any peaks that may occur during the pandemic.

Clients are encouraged to utilise the Appointment System to avoid queuing. However sick children and those needing emergency care do not require appointments and all children presenting with diarrheal disease are fast tracked at all facilities.

All routine care will be provided to walk in patients. This includes, among others:

- Acute ailments
- Family planning and emergency contraceptives

- Cervical smears
- Basic antenatal care
- Immunisation
- Sick children care
- Non Communicable Diseases (NCD), including Chronic Diseases of Lifestyle
- TB/HIV care (including ART)

Health Education & Promotion

During the summer season the numbers of educational initiatives aimed at addressing diseases which increase in the summer season are intensified. Outreaches this year will focus on proper hand-washing and sanitizing, wearing of masks and physical distancing as well as the promotion of breast and cup feeding. Due to the COVID 19 pandemic the footprint of City Health initiatives held in the run-up to World Aids Day will be amended. The Health Resource Centre will operate with skeleton staff for the period 27 December to 1 January 2021, however the unit will be able to print health promotional material during this time if required.

Chronic Medication

Due to medication shortages it has not been possible to allow for the full festive season jump for 2020. Only clubs meeting on 26 October to 6 November will receive a four-month supply of medication to allow for a jump over visits due 21 December 2020 to 1 January 2021. All other visits during the usual jump-period (23 November 2020 to 18 December 2020 and 4 January 2021 to 15 January 2021) will be standard visits which should result in some diminution of the club workload.

Surge Season Plan

The festive season coincides with the diarrheal diseases season where increases in diarrheal cases are seen during January/February and peaks over March/April. Each year a detailed intervention plan for the Cape Metro area is developed which permits continuous improvements based on lessons learnt from the previous festive season experience.

From November each district will:

- produce a localised plan that addresses specific details for its context,
- develop a framework within the community bases activities to ensure that they are cohesively marshalled, regulated and reported on,
- adhere to Standard Operating Procedures for facilities and referral mechanisms between different level of facilities per geographical area,
- meet on a regular basis to discuss data on the number of children under the age of five years presenting with diarrhoea at primary health care facilities and take the appropriate action.

Outbreak Response

City Health staff will maintain a heightened level of vigilance with respect to the COVID 19 pandemic. The following additional staff members have been appointed on a two-year contract to assist in managing the Health response.

Staffing category	Number
Clinical medical officer	22
Pharmacist	9
Post Basic Pharmacist Assistant	30
Clinical nurse practitioner	40
Enrolled nursing assistant	60
Enrolled nurse	49
Professional nurse	58
Senior worker	57

The current processes will remain in the relevant areas with support from the District & Provincial Communicable Diseases Control (CDC) coordinators and teams, specialists and the National Institute for Infectious Diseases (NICD) and communication will occur as required. Based on the potential for further peaks in how the pandemic progresses on an epidemiological basis and depending on utilization some overflow sites may be decommissioned.

Substance Abuse Treatment/Matrix Services

Substance abuse counselling and treatment continues uninterrupted at the eight Matrix sites as the festive season presents various challenges for recovering substance abusers and their families.

Emergency Curative Services for Adults

In accordance with legal mandates the City is not responsible for emergency curative services for adults or the provision of ambulance services. These services are performed by the Provincial Health Authority. Any emergencies that do arrive at City Health facilities will be stabilised & referred to the appropriate centres.

2.2 Recreation and Parks: Season Readiness Plan

The City services 47 beaches along its 307 km coastline. It also offers 35 swimming pools and 13 holiday resorts. Safety at the City's beaches will remain a top priority with the deployment of lifeguards throughout the Festive Season.

The Season Preparedness Plan (Annexure D) highlights the strategies in place for safety at swimming pools and beaches during the upcoming summer season. It provides details on environmental education, managing the City's Blue Flag programme, coordinating filming and events on beaches, managing pollution on beaches, dealing with stranding and/or carcass removal, managing shark safety, recreation programmes and ensuring adequate compliance and enforcement.

Important contact details are also provided in the plan which is attached as Annexure D.

2.3 Social Development and Early Childhood Development

2.3.1 Street People Programme

The Social Development and Early Childhood Development Department's Street People Unit has put the following in place for street people in terms of the Festive Season Plan:

- Contact the City's 107 emergency call centre from a land line for all street people related complaints/requests for support.
- Contact 021 480 7700 from a cellphone or landline for street people assistance
- The Street People team will be on stand-by to assist with any Street People related matters.
- The standby team will make arrangements for placement of homeless persons in shelters and at the Culemborg Safe Space OR the Paint City Safe Space for Street People, for those who agree to be placed.
- All complaint/requests for assistance related to children would be referred to the relevant contact persons at the Provincial Department of Social Development.

2.3.2 Identikit Project

The Department will support the promotion of child safety by providing linkages to organisations to assist with interventions in the event of neglected or lost children on beaches as identified by Disaster Risk Management. To this end, it will once again implement its Identikit Project which proved to be highly successful in recent years. A detailed project plan is attached as Annexure E.

3. INFORMAL SETTLEMENTS, WATER AND WASTE SERVICES

3.1 Festive Season Beaches, Scenic Routes and Central Business Areas Cleansing Plan

This programme is designed to implement extra top up cleaning services covering all central business areas, scenic routes and beaches throughout the Metro in order to effectively deal with the increased demand on services during this period.

Provision has been made for the appointment of temporary staff on EPWP contracts to compliment the permanent staff especially over the peak period of the high season. A total of 1 225 temporary staff members (workers, supervisors and clerks) will be deployed in the identified areas and will provide the required additional capacity during this period.

The complete programme is attached as Annexure F.

4 TRANSPORT

4.1 MyCiTi Festive Season arrangements

Adjustments to the MyCiTi services during December 2020 and January 2021 to accommodate changes in passenger travel patterns will be introduced. This include the availability of additional buses and extension of operating hours.

The complete schedule is attached as Annexure G.

5 FINANCE

5.1 Supply Chain Management

The Supply Chain Management (SCM) Policy as approved by Council provides for various procurement methods e.g. inviting tenders and requests for quotations. In the case of emergencies during the Festive Season period, the SCM policy and regulations provide for the accounting officer to approve the procurement of goods and services via a deviation process where such requests are well motivated and where the existence of an emergency can be demonstrated. Relevant systems of delegations provide for the approval of deviations below R200 000 by the Director: SCM and for deviations above R200 000 by the Bid Adjudication Committee / City Manager. SCM practitioners will be available during the festive season to handling procurement requests and purchase orders.

ANNEXURES

Annexure A: Festive Season Policing Plan

Annexure B: Fire & Rescue: Festive and Summer Season Contingency Plan

Annexure C: Film and Events Office Festive Season Plan

Annexure D: Recreation and Parks: Season Readiness Plan

Annexure E: Identikit Project Plan

Annexure F: Festive Season Beaches, Scenic Routes and Central Business Areas
Cleansing

Annexure G: MyCiTi Festive Season Arrangements

INTEGRATED FESTIVE SEASON POLICING PLAN 2020-2021

Period 05 October 2020 – 31 January 2021



CITY OF CAPE TOWN
ISIXEKO SASEKAPA
STAD KAAPSTAD

Making progress possible. Together

Safety and Security Directorate

- METROPOLITAN POLICE DEPARTMENT
- TRAFFIC SERVICES
- LAW ENFORCEMENT
- SSIU
- SIMS
- VIP



Contents

1. Situation
2. Mission
3. Threats
4. Operational Focus Areas/Operational Concepts
5. Geographical Areas of Service Delivery
6. Execution and Priority days
7. Force Levels
8. Joint Operation Centres
9. Command and Control
10. Contact Persons
11. Media Liaison
12. Awareness Drives
13. Best Practices

SITUATION

The Festive Season results in an increase of visitors to the City and its numerous tourist attractions, markets, beaches and places of interest. The influx of domestic and international visitors, together with the residents of the City leads to the aforementioned venues being filled to capacity and a drastic rise in vehicular and pedestrian traffic throughout the City and its surrounding suburbs.

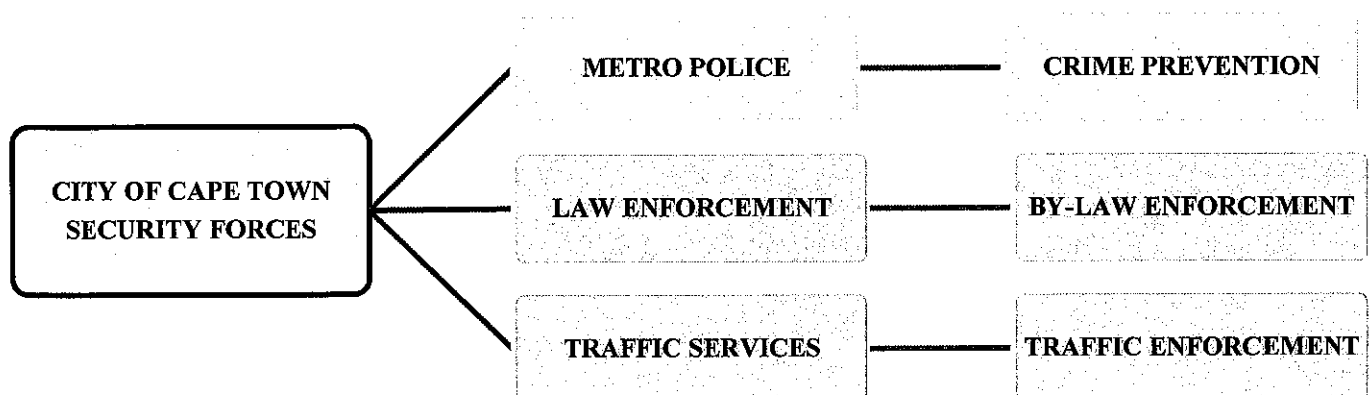
These crowded conditions increase the opportunity and means for a vast range of crimes, ranging from minor to life threatening and many of which arise out of negligence and failure to adhere to proper safety precautions. This is coupled with the abuse of alcohol and drugs thus creating an extremely challenging environment for the Law Enforcement fraternity.

Dr Nkosazana Dlamini Zuma, Minister of Cooperative Governance and Traditional Affairs, designated under section 3 of the Disaster Management Act, 2002 (Act No. 57 of 2002), having declared a national state of disaster, published in Government Gazette No. 43096, Government Notice No. 313 of 15 March 2020, and extended by Government Notices Nos. 646 of 5 June 2020, 765 of 13 July 2020, 889 of 15 August 2020 and 995 of 14 September 2020, hereby in terms of regulation 3(1) of the Regulations issued by me under section 27(2) of the Disaster Management Act, 2002, after consultation with the relevant Cabinet members, determine as follows:

Alert Level 1 will apply nationally from 00H01 on 21 September 2020. Please see Alert Level 1 document as per attachment.

MISSION

To plan and execute traffic policing, by-law enforcement and crime prevention operations/strategies to ensure public safety within the Cape Town Metro during the Festive Season through integrating the objectives of the City's IDP, Annual Police Plan, RTMC, National Crime Prevention Plan inclusive of internal and external role players viz., Metro Police, Traffic Services, Law Enforcement, Provincial Traffic and the South African Police Service (SAPS) and the enforcement of Alert Level 1 in terms of the COVID-19 regulations.



THREATS

The following threats were identified as main contributors that impact on the Safety and Security of the City of Cape Town. This determination is informed by data analysis (both SAPS and the City's EPIC).

- Land Invasions
- Gang related Threats
- Transport Related threats
- Protest Actions
- Service Delivery Threats
- Safety on beaches
- Safety at swimming pools
- Road Safety
- School Safety
- Technology Surveillance threats
- COVID-19 Related Threats
- Alcohol related offences (in an effort to curb the spread of COVID-19)
- Attacks on our members

In terms of crime our focus as an integrated Safety and Security fraternity will be to focus on the following crimes:

Serious and violent Crimes / Crime Prevention

- Murder and attempted murder
- Sexual offences
- All types of Assaults
- Domestic violence and violence against women and children
- Trio crimes
- Theft of and out of motor vehicles
- Housebreaking / residential / business
- Public violence / civilian intolerance / Service delivery issues
- Contravention of the Drugs, Liquor and Firearm Control Act
- Gang related crimes
- Wanted persons and outstanding suspects
- Safety on trains / busses
- Marine and environmental crime

Traffic Offences

- Driving under the influence (DWI)
- Reckless / negligent driving
- Driver and vehicle fitness
- Public transport interchanges
- Speeding
- Moving violations
- Parking offences
- Taxi violence and intolerance

- Number plates
- Safety belts
- Overloads
- N2 / R300 Priority Routes and Secondary Routes
- Held cell phone in hand whilst driving

Disorder (By-Law Offences)

- Drunk in public
- Drinking in public
- By-Law traffic offences
- Public open spaces
- Illegal hawking
- Urinating in public
- Dumping
- Contravention of By-Laws on beaches
- Contravention of the Sea Shore Act
- Sexual acts in public places
- Noise pollution
- Illegal advertising

OPERATIONAL FOCUS AREAS / OPERATIONAL CONCEPTS

The primary objective for this planning is to create an environment that will be conducive to safety for all tourist and inhabitants in line with the City's Integrated Development Plan (IDP), as it relates to safe city principles. These objectives will be realised through the efficient deployment of members in line with approved Metropolitan Police Annual Police Plan and identified threats. The determination of operational focus areas is informed by data analysis (both SAPS and the City's EPIC).

The main focus areas of the **Metro Police Department** will be:

- Integrated Area Planning, Execution, Monitoring, Coordination and Evaluation with Area Law Enforcement and Law Enforcement Specialized Units.
- Integrated Area Planning, Execution, Monitoring, Coordination and Evaluation with Area Traffic and Traffic Specialized Units.
- Integrated Area Planning, Execution, Monitoring, Coordination and Evaluation with SIMS.
- Integrated Area Planning, Execution, Monitoring, Coordination and Evaluation with SSIU.
- Integrated Operational Coordination through an Integrated Area Joint Operational Centre per Area
- Integrated Area JOC coordination with the Metropole Joint Operational Centre at TMC Goodwood.
- EPIC compliance
- Visible policing (vehicle patrols, foot patrols, equestrian patrols, motorcycle patrols) with focus on CBD areas and informal settlements; Section 13 Roadblocks and Vehicle Control Points (VCP)
- Visits to libraries, clinics, resorts and swimming pools in identified areas
- Support other role players on critical days with regard to access control at identified priority beaches
- Addressing disorder through enforcement of the City's By-Laws and dealing with other minor offences
- Regular beach patrols and enforcement of By-laws relating to beach management
- Crimes against women and children: Enforcement of Domestic Violence Act, targeted street patrols

- Pro-active patrols linked to high accident, traffic offence and hijacking locations
- Enforcement and combating of violence related to public transport
- Patrols at tourist destinations, inclusive of Table Mountain
- Joint operations with the SAPS to combat identified crimes
- Policing of alcohol, firearms and drug related crimes
- In addition, the Department's Neighbourhood Safety Officers will be maintained which include the following concepts:
 - Know their community and are known
 - Take care of safety, liveability and peace
 - Police and City officials tasked to promote open communication and cooperation amongst all stakeholders in a particular area (neighbourhood)
 - Harnessing the collective resources of both state and non-state players towards a problem that could escalate into crime and disorder related problems.
- COVID-19 Enforcement of Disaster Management Act and Level 1 Regulations

The main focus areas of the **Traffic Services** will be:

- Integrated Area Planning, Execution, Monitoring, Coordination and Evaluation with Area Law Enforcement and Law Enforcement Specialized Units.
- Integrated Area Planning, Execution, Monitoring, Coordination and Evaluation with Area Metro Police and Metro Police Specialized Units.
- Integrated Area Planning, Execution, Monitoring, Coordination and Evaluation with SIMS.
- Integrated Area Planning, Execution, Monitoring, Coordination and Evaluation with SSIU.
- Integrated Operational Coordination through an Integrated Area Joint Operational Centre per Area
- Integrated Area JOC coordination with the Metropole Joint Operational Centre at TMC Goodwood.
- EPIC compliance
- Submission and Management of Traffic Management Plan for respective areas
- Traffic calming, point duty, road closures
- Policing of public interchanges
- Speed enforcement
- High visibility patrols on major routes
- Attending to all road related incidents and accidents
- Vehicle control points at identified locations leading to beaches
- Pro-active patrols executed in high accident and high traffic offence locations, as well as high-risk car-jacking locations
- Highway patrols, with focus on identified routes
- Enforcement of public transport legislation
- Patrols at interchanges and taxi ranks
- COVID-19 Enforcement of Disaster Management Act and Level 1 Regulations

The main focus areas of the **Law Enforcement Services** will be:

- Integrated Area Planning, Execution, Monitoring, Coordination and Evaluation with Area Traffic and Traffic Specialized Units.
- Integrated Area Planning, Execution, Monitoring, Coordination and Evaluation with Area Metro Police and Metro Police Specialized Units.
- Integrated Area Planning, Execution, Monitoring, Coordination and Evaluation with SIMS.

- Integrated Area Planning, Execution, Monitoring, Coordination and Evaluation with SSIU.
- Integrated Operational Coordination through an Integrated Area Joint Operational Centre per Area
- Integrated Area JOC coordination with the Metropole Joint Operational Centre at TMC Goodwood.
- EPIC compliance
- Access Control at identified locations and employment of Temporary Law Enforcement officers.
- Enforcement of City's By-laws with particular emphasis on the By-Law relating to streets, public spaces and nuisances and the regulations relating to the Sea Shore Act
- High-visibility foot and vehicle patrols on beaches
- Security at allocated Blue Flag Beaches
- Enforcing Marine Living Resources Act
- Traffic violations as per Traffic By-law
- Parking offences as NRTA and parking By-law
- Preventative and reactive lifesaving to complement lifeguards
- Marine, coastal and inshore water patrols by vessels (jet skis and boats)
- Fisheries permits and inspections
- Animal & dog registration and control
- Seizure & impoundment of vessels, vehicles and diving equipment used in poaching
- Lost children
- React to drowning's and near drowning's
- React to dumping and environmental degradation
- Land Use, noise
- Liquor compliance
- Metal theft & illegal scrap yards
- Domestic violence
- Malicious damage to council property
- Water abuse or wastage
- Anti-social behaviour
- Response to incidents of land invasions on council property across the Metropolitan area
- Drug enforcement operations in conjunction with the Metro Polices' Tactical Response Unit and the SAPS
- Focused problem solving operations in respect of displaced people. These will be conducted jointly with social development and other relevant role players.
- COVID-19 Enforcement of Disaster Management Act and Level 1 Regulations

GEOGRAPHICAL AREAS OF SERVICE DELIVERY AND JOINT, INTEGRATED AND AUTONOMOUS OPERATIONAL ACTIONS

PRIORITY AREAS INCLUDE THE FOLLOWING:

- High Risk and Medium Risk Hotspots in **Informal settlements**
- **LEAP** Deployment in Khayelitsha, Delft, Nyanga, Philippi, Mitchells Plain and Bishop Lavis
- **Urban renewal areas** within City of Cape Town
- **Tourist attractions** within all four Areas in the Metropole, Table Mountain and Nature Reserves
- All **beaches** in particularly the Blue Flag beaches
- All **swimming pools** within the Metropole
- All **tidal pools** within the Metropole
- All problematic **Traffic Intersections** in each of the four Areas
- All **areas** covered by Technical Surveillance Cameras

- All **routes** covered by Technical Surveillance Cameras
- Identified **hotspot crime** areas
- Identified **hotspot gang** areas
- Identified high risk, medium risk and low risk **land invasion areas**
- **COVID-19 Hotspot** Health Areas
- **Primary routes:** N2, N1, R300, N7, M3, M5
- **Secondary routes:** Stellenbosch Arterial, Jakes Grewel, Baden Powel, Govan Mbeki,
- **Trains** and train stations
- **My City** and **GABS** Bus Stations and routes
- Open Spaces, **parks** and public spaces
- **Events** venues
- **N2/R300 Corridor** for protest, high-jacking's and robberies
- High Risk **Depots** with firearms

Force display on a particular day by all three security forces by means of:

- Intersection display
- pamphleteering at intersections
- Door to door drives in certain areas
- rotated deployment at certain shopping areas

Radio talks on the various radio stations within the metro pole by Operational Commanders

Media statements regarding the successes and deployment in written media

Exhibitions on various days in shopping centres regarding the branding of the security forces of the City of Cape Town.

Area North

AREA	SUBURBS / TOWNS / AREAS	POLICE STATIONS	BEACHES
NORTH	Elsies River; Ravensmead; Netreg; Valhalla Park; Bishop Lavis; Bonteheuwel; Matroosfontein; Epping; Eerste River ; Parow; Leonsdale; Ruiterswacht; Goodwood; Parow; Belhar; Bonteheuwel; Bellville; Stikland; La Belle; Monte Vista; Panorama; Milnerton; Bothasig; Du Noon; Table View; Melkbos; Atlantis; Mamre; Phisantekraal; Bloekombos; Kraaifontein; Wallacedene; Scottsdene; Northpine; Brackenfell; Durbanville; Joe Slovo	Goodwood; Parow; Bellville; Bellville South; Belhar; Bishop Lavis; Elsie's River; Ravensmead; Atlantis; Melkbos; Table View; Milnerton; Kraaifontein; Brackenfell; Durbanville	Silverstroom; Melkbos; Eerste Steen; Big Bay; Table Bay; Milnerton; Kreeftebaai; Hakgat; Duinefontein

Area East

Helderberg	Khayelitsha	Beaches	Blue flag Beaches
Somerset West Mfuleni Wesbank Kuilsvier Kleinvele Eersterivier Blackheath Delft Lwandle Nomzamo	Site B Site C Harare Mandela Park Lingeletu West Khayelitsha Site B	Macassar Kogel Bay Strand Gordon's Bay Monwabisi Harmony Park Sparks Bay Klippias Bay	Bikini Beach

AREA	SUBURBS / TOWNS / AREAS	POLICE STATIONS	BEACHES
WEST	Retreat; Sea Winds; Strandfontein; Grassy Park; Lotus River; Hout Bay (Izamayethu); Noordhoek; Sun Valley; Ocean View; Simon's Town; Fishhoek; Muizenberg; Lakeside; Steenberg; Strandfontein; Kirstenhof; Epping; Langa; Kensington; Maitland; Woodstock; Salt River; Observatory; Sea Point; City Centre; Mowbray; Rondebosch; Claremont; Wynberg; Kenilworth; Diep River to Tokai; Atlantic Seaboard; Green Point Common; Central CBD; Company Gardens; Station Deck; Table Mountain	Cape Town; Sea Point; Camps Bay; Maitland; Pinelands; Langa; Woodstock; Rondebosch; Mowbray; Claremont; Wynberg; Diep River; Kensington; Table Bay Harbour; Simonstown; Ocean View; Strandfontein; Philippi; Grassy Park; Steenberg; Houtbay; Kirstenhof; Muizenberg; Fish Hoek	Maidens Cove; Clifton 1-4; Camps bay; Saunders Rock; Rocklands; Queens; Three Anchor Bay; Muizenberg to Clovelly; Fish Hoek to Simonstown; Millers Point; Soetwater to Kommetjie; Hout bay to Llandudno; Strandfontein; Blue Waters

Area South

Mitchell's Plain	Klipfontein	Beaches	Blue flag beaches
Mitchells Plain Town Centre Promenade Mall Westgate Mall Mitchell's Plain Westridge Tafelsig Beacon Valley Strandfontein Rocklands Woodlands Samora Machel Mandalay Eastridge Portlands Lentegeur Wolfgat	Nyanga Gugulethu Manenberg Heideveld Athlone Crossroads Lansdowne Gatesville Philippi East Philippi Horticultural Area Bridgetown Crawford	Mnandi Strandfontein Bluewaters Wolfgat	Strandfontein Mnandi

SWIMMING POOLS

Area	Swimming Pool	Opening and Closing Period	Current Security Deployment		1 st Phase Weekends only	2 nd Phase	3 rd Phase
			Day	Night	16 October – 15 November	16 November – 15 December	16 December – 30 January 2021
North	Atlantis	16 th October – 12 th April 2021	2	2	2	2	4
North	Sea Point	16 th October – Throughout the year onwards	1	1	4	4	8
North	Trafalgar	16 th October – 12 th April 2021	1	1	2	2	5
	Kensington	16 th October – 12 th April 2021	1	1	2	2	4
	Khayelitsha	16 th October – 12 th April 2021	1	1	2	2	3
	Strand Indoor	16 th October – Throughout the year onwards	0	0	3	3	6
	Athlone	16 th October – 12 th April 2021	2	2	2	2	4
	Bonteheuwel	16 th October – 12 th April 2021	1	1	3	3	6
	Goodwood	16 th October – 12 th April 2021	2	2	2	2	4
	Hanover Park	16 th October – 12 th April 2021	3	3	3	3	6
	Manenberg	16 th October – 12 th April 2021	1	1	3	3	6
	Ruyterwacht	16 th October – 12 th April 2021	2	1	2	2	4
	Browns Farm	16 th October – 12 th April 2021	2	2	2	2	2
	Eastridge	16 th October – 12 th April 2021	1	2	2	2	4
	Lentegeur	16 th October – 12 th April 2021	1	1	2	2	4
	Mnandi	16 th October – 12 th April 2021	6	8	2	2	2
	Muizenburg	16 th October – 12 th April 2021	0	0	2	2	2
	Retreat Indoor	16 th October – Throughout the year onwards	2	2	2	2	2
	Westridge	16 th October – 12 th April 2021	1	1	2	2	2
	Wynberg	16 th October – 12 th April 2021	2	1	2	2	3
TOTAL					46	46	81

EXECUTION AND PRIORITY DAYS

PHASES

- | | |
|--|-----------------------|
| - 04 October 2020 to 29 November 2020 | Pre- Holiday Season |
| - 30 November 2020 to 10 January 2021 | Festive Season |
| - 11 January 2021 to 31 January 2021 | End of Festive Season |
| - 01 February 2021 to 28 February 2021 | Post-Holiday Season |

DETAILED DESCRIPTION OF PHASES

Priority days:

- 05 November 2020 - Thursday Guy Fawkes
- 25 November 2020 to 10 December 2020: 16 Days of activism against women and children abuse

- 15 December 2020 - Tuesday: School closure
- 15 December 2020 - Tuesday: Closing of Schools
- 16 December 2020 - Saturday: Day of Reconciliation – Cape Minstrels
- 18 December 2020 - Friday: Industry Closure
- 24 December 2020 - Thursday: Cape Minstrels Malaise Choirs
- 25 December 2020 - Friday: Christmas Day
- 26 December 2020 - Saturday: Day of Goodwill and beaches
- 27 December 2020 - Sunday: Beaches
- 31 December 2020 - Thursday: New Year's Eve- Cape Minstrels
- 01 January 2021 - Friday: New Year's Day – Cape Minstrels
- 02 January 2021 - Saturday: Beaches
- 03 January 2021 - Sunday: Beaches
- 08/09/10 January 2021 -Friday/Saturday/Sunday: Beaches
- 15/16/17 January 2021 -Friday/Saturday/Sunday: Beaches
- 27 January 2021 - Wednesday: Schools commences 1st Term
- 04 February 2021 - Thursday: Opening of Parliament

Pre-Holiday Season Stage 1: 04 October 2020 – 29 November 2020

- This stage will address the continuous execution of the annual Integrated Festive Season Policing Plan of the Safety and Security Directorate linked to the business plan targets. This includes traffic awareness and by-law awareness initiatives and day-to day operations which is clearly defined in the action steps of the annual plan, namely roadblocks, vehicle checkpoints, point duties, crime prevention operations, foot patrols, vehicle patrols, equestrian patrols and operational support to the SAPS and other external role-players
- Increase visibility in CBDs and identified residential areas. Maintain beach and operational deployment utilizing foot and vehicle patrols as well as traffic management
- Joint Operations / Integrated Operations / Autonomous Operations
- Land Invasion Enforcement
- COVID-19 Enforcement
- DPU, Dumping and Liquor Enforcement
- Sixteen Days of Activations Enforcement
- Area JOC Coordination
- Metropole JOC Enforcement

Festive Season Stage2 : 30 November 2020 to 10 January 2021

- Implementation of the safety on beaches program on 04 December 2020
- Implementation of the safety at swimming pools program on 04 December 2020
- Increased visibility and operational support toward integrated crime prevention operations with SAPS
- Implementation of traffic policing enforcement initiatives to increase road safety.
- Deployment to identified beaches, inclusive of activation of beach JOCS
- Joint operations with SAPS as per crime threat and pattern analysis
- Integrated Operations between the Policing Services within Safety and Security
- Autonomous Operations by the Areas and Specialized Units of the different Policing Services
- Roadblocks linked to high traffic offence and accident locations, including driving whilst under the influence of liquor/narcotics, illegal possession of firearms, stolen vehicles, stolen goods and drugs

- Vehicle Control Points linked to high traffic offence and accident locations, including driving whilst under the influence of liquor/narcotics, illegal possession of firearms, stolen vehicles, stolen goods and drugs.
- Saturated major route patrols
- Saturated secondary route patrols
- Enforcement of City's By-laws
- Moving violations including cell phone offences
- Public Transport Legislation
- Pedestrian Safety
- Land Invasion Enforcement
- COVID-19 Enforcement
- DPU, Dumping and Liquor Enforcement
- Sixteen Days of Activations Enforcement
- Area JOC Coordination
- Metropole JOC Enforcement
- Technical Surveillance Monitoring of Areas and Routes
- Investigation of internal criminal and departmental cases and oversight.

End of Festive Season Stage 3: 11 January 2021 – 31 January 2021

- The traffic policing initiatives are continued, enhanced by visible policing linked to the objectives of the Annual Festive Season Policing Plan and RTMC Enforcement Plan.
- Implementation of the safety on beaches program on 04 December 2020
- Implementation of the safety at swimming pools program on 04 December 2020
- Increased visibility and operational support toward integrated crime prevention operations with SAPS
- Implementation of traffic policing enforcement initiatives to increase road safety.
- Deployment to identified beaches, inclusive of activation of beach JOCS
- Joint operations with SAPS as per crime threat and pattern analysis
- Integrated Operations between the Policing Services within Safety and Security
- Autonomous Operations by the Areas and Specialized Units of the different Policing Services
- Roadblocks linked to high traffic offence and accident locations, including driving whilst under the influence of liquor/narcotics, illegal possession of firearms, stolen vehicles, stolen goods and drugs
- Vehicle Control Points linked to high traffic offence and accident locations, including driving whilst under the influence of liquor/narcotics, illegal possession of firearms, stolen vehicles, stolen goods and drugs.
- Saturated major route patrols
- Saturated secondary route patrols
- Enforcement of City's By-laws
- Moving violations including cell phone offences
- Public Transport Legislation
- Pedestrian Safety
- Land Invasion Enforcement
- COVID-19 Enforcement
- DPU, Dumping and Liquor Enforcement
- Sixteen Days of Activations Enforcement
- Area JOC Coordination
- Metropole JOC Enforcement

- Technical Surveillance Monitoring of Areas and Routes
- Investigation of internal criminal and departmental cases and oversight.

Post-Holiday Season Stage 4: 1 February 2021 to 28 February 2021

- Visibility and operational support towards integrated crime prevention operations with SAPS
- Implementation of traffic policing enforcement initiatives to increase road safety, namely:
- Joint operations with SAPS as per crime threat and pattern analysis
- Roadblocks linked to high traffic offence and accident locations, including driving whilst under the influence of liquor/narcotics, illegal possession of firearms, stolen vehicles, stolen goods
- Saturated major routes patrols
- Enforcement of City's generic By-laws
- Moving violations including cell phone offences
- Public Transport Legislation
- Pedestrian safety
- Sustained visibility and operational support towards the integrated crime prevention operations with SAPS
- Sustained visibility in CBD and identified residential areas
- Sustained beach deployment and operational deployments linked to foot and vehicle patrols as well as traffic management linked to beach
- Effective operational management of big events, traffic management plans

Easter Festive Season Stage 5: 02 April 2021 – 05 April 2021

- Implementation of the safety on beaches program.
- Increased visibility and operational support towards integrated crime prevention operations with SAPS
- Increased visibility in CBD and identified residential areas
- Maintain beach and operational deployment utilizing foot and vehicle patrols as well as traffic management
- Implementation of traffic policing enforcement initiatives to increase road safety, namely:
- Deployment to identified beaches, inclusive of activation of beach JOCS
- Joint operations with SAPS as per crime threat and pattern analysis
- Roadblocks linked to high traffic offence and accident locations, including driving whilst under the influence of Liquor/narcotics, illegal possession of firearms, stolen vehicles, stolen goods
- Major routes patrols
- Enforcement of City's generic By-laws
- Moving violations including cell phone offences
- Public Transport Legislation
- Pedestrian safety

PLANNING

Each Area Command and Control Senior Management Team will be responsible to plan their integrated **deployment to the beaches**.

Each Area Command and Control Senior Management Team will be responsible to plan their integrated **deployment to the swimming pools**

Each Area Command and Control Senior Management Team will be responsible to plan their integrated operations in terms of **Displaced People, dumping, littering and begging**.

Each Area Command and Control Senior Management Team will be responsible to plan their integrated operations in terms of **Joint Operations with SAPS** in terms of threats as indicated in this document.

Each Area Command and Control Senior Management Team will be responsible to plan their integrated operations in terms of **Integrated Operations between Metro Police, Traffic and Law Enforcement and other internal role players** in terms of threats as indicated in this document.

Each Area Command and Control Senior Management Team will be responsible to plan their **autonomous operations in terms specialized units** regarding a specific threat for example Liquor Unit.

Each Area Command and Control Senior Management Team will be responsible to plan their integrated **Roadblocks and Vehicle Control Points** within their area of responsibility.

A weekly operational grid with date, time, actions, deployment, command and control must be part of the planning process.

The operational grid must be signed off by the Integrated Command and Control Area Team.

The integrated weekly operational grid must be available in the Area JOC and the Metropole JOC.

A total number of **2260** operational Metro Police, Law Enforcement and Traffic members will be used operationally for the 2020/2021 Festive Season Programme.

EXECUTION

The execution of the operational plan will be the responsibility of the Integrated Area Operational Command and Control Team.

Proper parades must be part of the execution process

Line Managers must take command and control in terms of the execution

Officials must be provided with the necessary resources to execute the operations

Proper record keeping in terms of operational actions, successes, arrest and confiscations.

The safety of members must be a priority.

Sitreps must be reported to the different JOC's.

Proper briefings and debriefings must be part of the execution

MONITORING

Proper record keeping form part of successful operations. Record keeping includes the following:

EPIC Pre-planning

Incident reporting and management

Field enablement

Image capturing

Shooting incidents and reports

Pocket book entries

Occurrence Book (OB) entries

Impoundments

Daily and weekly Feedback reports to the different JOC's

Standby Reports

COORDINATION

Festive Season Joint Operational Coordinating Committee

Operational Coordination will take place between the different JOC's namely:

Metropole Integrated Joint Operational Centre

Area Integrated Joint Operational Centre

Venue Operational Centre

SAPS Provincial Joint Operational Centre

SAPS Prov JOC

Area JOC meeting daily at 07:30

Metropole JOC meeting daily at 08:30

Executive Director's Festive Season Coordinating JOC once every week

SAPS Prov JOC every Tuesday and Friday at 07:30

SAPS Core Command Group meeting every Monday and Friday at 08:00

Provincial Cabinet Meeting Tuesdays and Fridays at 10:00

DCT meeting every Tuesday and Thursday at 09:30

EVALUATION

Evaluation will be done in terms of the measurements in terms of the following:

Reported crime feedback by the SAPS

Land Invasion Incident reports

Protest Action reports

Incidents of near drownings

Incidents of drownings

Arrest and confiscations

Prosecutions and convictions

Transport related incidents

CCTV footage reports

FORCE LEVELS

- A total number of **2260** operational Metro Police, Law Enforcement and Traffic members will be used operationally for the 2020/2021 Festive Season Programme.
- A **daily Area Integrated Operational Deployment grid** will be developed and be attached to the Festive Season Operational Plan
- The **deployment of Metro Police, Traffic, Law Enforcement, SSIU and SIMS** in terms of each Area will be made available to the Integrated Area JOC and the Integrated Metropole JOC at the Goodwood TMC.
- The **Area Chiefs of Metro Police, Traffic and Law Enforcement** will take Command and Control on a rotational basis to chair the 07:30 meeting in the morning from Monday to Sunday. The deployment per daily Area Operational grid will be monitored by the Area JOC.
- The **Office of Director Robberts and the Chiefs of Metro Police, Traffic and Law Enforcement** will chair the daily Festive Season Meeting at 08:30 from a Monday to a Sunday. The deployment per daily Metropole Operational grid will be monitored by the Metropole JOC.
- The **Office of the Executive Director for Safety and Security** will chair a once a week coordinating Festive Season meeting with all the different role players of the different Directorates in terms of the Festive Season Safety and Security Plan.
- Every weekly Area Operational grid will indicate the following deployments:
 - Metro Police Area deployment
 - Metro Police Specialized Unit deployment

- Traffic Area deployment
- Traffic Specialized Unit deployment
- Law Enforcement Area deployment
- Law Enforcement Specialized Unit deployment
- Law Enforcement Leap Deployment will be allocated to Khayelitsha, Nyanga, Philippi, Delft, Mitchells Plain and Bishop Lavis

The different Specialized Units will be allocated to the different Areas to compliment the beach and land invasion coordination deployment. The Law Enforcement LEAP deployment will complement the five identified LEAP Stations.

INTEGRATED JOINT OPERATIONAL CENTRES

- A **Metropole Integrated Joint Operational Centre** will be established at the Goodwood TMC that will be responsible for the coordination of the four Area JOC's, a link with the SAPS Command Centre Prov JOC and with the TMC.
- An **Area Integrated Joint Operational Coordinating Centre** will be established at each area and must ensure that a representative is assigned for JOC duties. Deployment, Incident management and successes and confiscations must be communicated with the TMC Metropole JOC.
- The **TMC JOC of Traffic, Metro Police and Law Enforcement** will coordinate the daily day to day policing aspects where the Metropole JOC at the TMC will only coordinate Integrated, Joint and Autonomous Operations.
- **Smaller integrated beach JOC's** will communicate with the Area JOC's in terms of:
 - Commencement and termination of JOC
 - Staff complement
 - Estimate amount of public on beach
 - Any valid incident
 - Crime Related Incidents
 - Traffic congestion
 - Confiscations
 - Drowning's or near drowning's
 - Missing children
 - Visit by VIPs to JOC
 - Request for reinforcements or specific services
 - Situational reports on an hourly / regularly, even if there nothing to report

JOINT OPERATIONAL CENTRES TIME FRAMES FOR THE THREE SECURITY UNITS:

- **JOC OPERATIONAL TIMES PHASE 1: Activated by the 04 October 2020**
 - Normal Days: 07:00 to 19:00
- **JOC OPERATIONAL TIMES PHASE 2: Activated by the 30 November 2020**
 - Normal Days: 07:00 to 20:00
 - Critical Days: 06:00 to 22:00
 - Night Shift: 20:00 to 04:00 (31 Dec 2020 – 01 Jan 2021).
- **JOC OPERATIONAL TIMES PHASE 3: Activated by the 11 January 2021**
 - Normal Days: 07:00 to 19:00
- **JOC OPERATIONAL TIMES PHASE 3: Activated by the 01 February 2021**
 - Normal Days: 07:00 to 20:00

LOCATION OF METROPOLE, AREA AND SMALLER JOC'S

Metropole	Integrated JOC Location
Metropole	Metropole Integrated JOC at TMC Goodwood

Area	Integrated JOC Location
North	Brackenfell Law Enforcement Base
South	Metro Police Depot Rochester Road Philippi-East
East	Traffic Base Station Gordons Bay
West	Metro Police Area Office Cape Town

Particulars of the co – coordinating centres are as follows:

Area	JOC	Location
North	Tableview	Beachfront opposite KFC
	Silverstroom	Building at Silverstroom
South	Mnandi	Building at Mnandi (Law Enforcement Office)
East	Harmony Park	Metro Police deployment office-Harmony Park
West	Strandfontein	Building at Strandfontein
	Muizenberg	Building at Sunrise Beach
	Soetwater	Building at Soetwater
	Sea Point	Building at Swimming Pool (Pavilion)

COMMAND AND CONTROL

Overall Command: Executive Director Safety and Security

Operational Coordination: Director Operational Coordination

Operational Command: Traffic Chief, Metro Police Chief, Law Enforcement Chief, SSIU Chief, SIMS Chief, VIP Chief

Area Command and Control:

- The **Area Chiefs of Metro Police, Traffic and Law Enforcement** will take Command and Control on a rotational basis to chair the 07:30 meeting in the morning from Monday to Sunday.
- Each Chief will be responsible to deal with each own Line Managers in terms of operational Command and Control.
- It will be the decision of the three Chiefs of the Area who will take Operational Command of a Joint Or Integrated operation.
- The deployment per daily Area Operational grid will be monitored by the Area JOC as well as the Service who takes lead for the week.

Metropole JOC Command and Control at Goodwood TMC:

- The **Office of Director Robberts and the Chiefs of Metro Police, Traffic and Law Enforcement** will chair the daily Festive Season Meeting at 08:30 from a Monday to a Sunday.
- The deployment of the four Areas as per Operational grid will be monitored by the Metropole JOC.
- **Dir Robberts** will get a week to coordinate the Metropole JOC and operations.
- **Chief le Roux** will get a week to coordinate the Metropole JOC and operations.
- **Chief Thomas** will get a week to coordinate the Metropole JOC and operations.
- **Chief Smith** will get a week to coordinate the Metropole JOC and operations.
- **Chief Ngele** will coordinate SSIU in terms of standby list.
- **Commander Fourie** will coordinate SIMS in terms of standby list
- **Each Service**, Metro Police, Traffic, Law Enforcement, SIMS, SSIU will appoint an officer for the Metropole JOC according to require time frames.

The **Office of the Executive Director for Safety and Security** will chair a once a week coordinating Festive Season meeting with **all the different role players of the different Directorates** in terms of the Festive Season Safety and Security Plan. Feedback will be submitted by each of the Role Players.

ADMIN AND LOGISTICS

The following will apply:

- All members to be dressed in full uniform, albeit, step outs or combats, unless otherwise specified. This shall include all relevant issued equipment, bullet proof vests, reflective gear and rain gear.
- All arrested persons to be detained at the respective SAPS Centres for Detention. The arrested persons are to be treated with dignity at all times. The Constitution of our Country must be conformed to at all times
- Members must ensure strict compliance to the stipulations as set out in Section 49 (2) of the Criminal Procedure Act 51/1977
- The arresting officer must ensure that the status of all foreigners arrested is brought to the attention of the SAPS Community Service Centre Commander, in order for the latter to inform the respective consulates. This is to receive strict compliance.
- Statistics must be compiled and forwarded to the respective Area Office upon completion of each operation
- Respective Area Offices to collate feedback and forward to the Central operations: coordination desk
- Proper record must be kept of all operations
- Briefing and de-briefing as per respective Area Operational Plans
- Will collate all information received and disseminate to all relevant parties
- A Beach Report will be emailed out to all parties agreed to by the Departmental Chief
- A Daily Operations report will be sent out at 06:30 and 18:30 every day
- All additional reports will be disseminated to the relevant party as agreed by the Departmental Chief

Mandate of the other departments in terms of the festive season regarding safety and security

- Area Operational Commanders from Traffic, Metro Police and Law Enforcement are to liaise with the following role players in order to ensure a joint approach: Determine what is the mandate of each of the departments in terms of safety and security and how do they link to the festive season plan

1	Feedback: Recreation and Parks: Sport and Recreation	Helen Jordaan
2	Feedback: NSRI	Andrew Ingram
3	Feedback: City Health Services	Reinhardt Avenant
4	Feedback: Social Development and Early Childhood Development	Chantal Michaels
5	Feedback: Economic Development (Informal Trading)	Paul Williamson
6	Feedback: Media Office	Vanessa Schultz
7	Feedback: Events & Film Permitting	Terence Isaacs
8	Feedback: 107 Public Emergency Communications Centre	Suretha Visser
9	Feedback: Fire & Rescue Services	Ian Schenetler
10	Feedback: Disaster Risk Management Centre	Mark Pluke
11	Feedback: Metropolitan Police Department	Wayne Le Roux
12	Feedback: Law Enforcement	Shaun Graham Smith
13	Feedback: Traffic Services	Heathcliff Thomas
14	Feedback: South African Police Service	Representative
15	Feedback: Informal Settlements	Riana Boonzaaier
16	Feedback: SPCA	Moyo
17	Feedback: Tourism	Mr. Toeffey
18	Feedback: Priority Assets Management	Representative
19	Feedback: Neighborhood Watch	Representative

- South African Police Service
- Provincial Traffic
- Department of Community Safety
- Department of Home Affairs
- Department of Education
- Department of Social Development
- Department of Sport and Recreation
- Department of Justice
- Department of National Prosecuting Authority
- Department of Correctional Services
- NGO's